



# Technologies Customized to **Every Part of the Globe**

With a global presence in 33 countries, Dana Incorporated boasts more than 100 engineering, manufacturing, and distribution facilities. With a worldwide network of local service centers, each customer is assured of the local proximity and responsiveness they need.

## **About Dana Incorporated**

Dana is an integral partner for virtually every major vehicle and engine manufacturer worldwide. We are a leading supplier of drivetrain, sealing, and thermal technologies to the global automotive, commercial-vehicle, and off-highway markets. Founded in 1904, we employ thousands of people across six continents.



## **About Dana Off-Highway Drive and Motion Technologies**

Dana delivers fully optimized Spicer® drivetrain systems and individual product solutions to customers in construction, agriculture, material-handling, underground-mining, and forestry markets, plus Brevini® motion systems for machine working functions. We bring our global expertise to the local level with technologies customized to individual requirements through a network of strategically located technology centers, manufacturing locations, and distribution facilities.

Learn more about Dana's wheel and track planetary drive solutions at [dana.com/offhighway](http://dana.com/offhighway).

[dana.com/oh/contact](http://dana.com/oh/contact)



**SPICER®**

*Drivetrain Products*

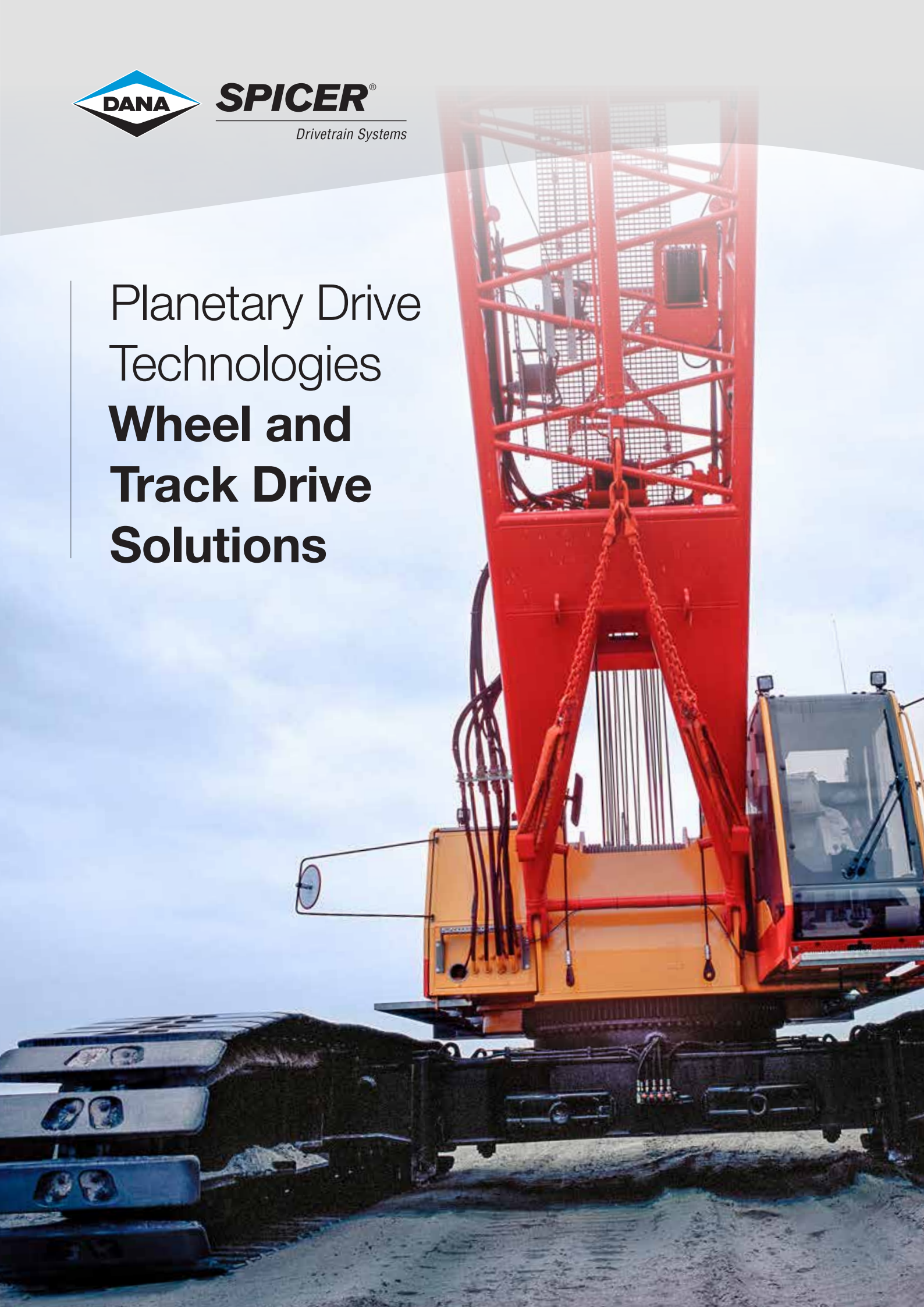
### **Application Policy**

Capacity ratings, features, and specifications vary depending upon the model and type of service. Application approvals must be obtained from Dana; contact your representative for application approval. We reserve the right to change or modify our product specifications, configurations, or dimensions at any time without notice.



**SPICER**<sup>®</sup>  
*Drivetrain Systems*

Planetary Drive  
Technologies  
**Wheel and  
Track Drive  
Solutions**







# Wheel and Track Drives with a Planetary Gear Design

An ideal solution for many mobile applications, the unique Spicer® planetary design offers several advantages. Plus, we can supply a full package of hydraulic motor and motion control valves to meet specific customer requirements.

## Wheel Drive Technologies

Spicer wheel drives are used across a wide range of vehicles, including agricultural machines, self-propelled working platforms, forklifts, and heavy-duty wheeled vehicles. Our advanced design combines the high-speed hydraulic motor with the planetary gear unit to produce a more economical package versus using a large low speed motor on its own.

Main Features
Integrated Brevini® hydraulic motors for compact dimensions
Suitable for hydraulic and electric motors on demand
Integrated dynamic brake system
Improved heat dissipation
Internal multidisc parking brake
Manual disengagement device for towing
High radial and axial load capacity bearings
Studs and nuts available in metric and imperial dimensions
Suitable for low-temperature working conditions

Model	Maximum Output Torque (kNm)	Reduction Ratio Range
<b>RF46</b>	7,5	8,33* – 42
<b>RF66</b>	10	11 – 42
<b>RFD159</b>	22	12 – 36
<b>RFD255</b>	38	19 – 51
<b>RFD280</b>	45	18 – 51

Model	Maximum Output Torque (kNm)	Reduction Ratio Range
<b>RX21-10</b>	5	14 – 29
<b>RX21-12</b>	5,5	13 – 29
<b>CWD2150.1-HD</b>	10	13 – 49
<b>CWD2150H</b>	18	19 – 42
<b>CWD3150L</b>	18	76 – 112

\* Single stage



## Track Drive Technologies

Spicer® track drive units are used in tracked vehicles across many industries, including mining and construction. Single-, double- and three-stage designs and a wide range of reduction ratios provide an optimal fit for different needs.

### Main Features

Integrated Brevini® hydraulic motors for compact dimensions

Suitable for hydraulic and electric motors on demand

Internal multidisc parking brake

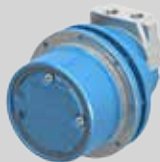
Manual disengagement device for towing

High radial and axial load capacity bearings

Suitable for low temperatures

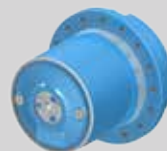
Sealing system optimized for the most severe working conditions

### CTM Single Stage

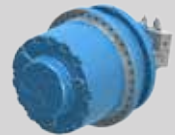


Model	Maximum Output Torque (kNm)	Reduction Gear Ratio
CTM1009	1,1	5
CTM1016	1,3	6,09
CTM1022	2,2	6,09

### CTD Two- Stage



### CTU Three- Stage



Model	Maximum Output Torque (kNm)	Reduction Gear Ratio
CTD1020	2,2	6
CTD2050	5,5	16 – 53
CTD2100.1	10	15 – 49
CTU3150.1	18	65-141
CTU3200.1	25	61-130
CTU3300.1	35	42-130
CTU3500.1	45	87-169
CTU3700.1	70	54-190
CTU3850.1	85	63-229
CTU31100.1	110	63-229