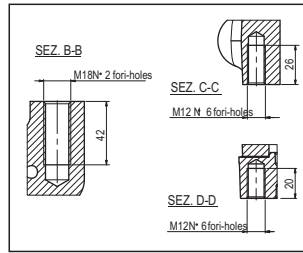
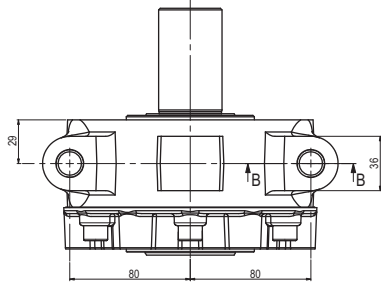
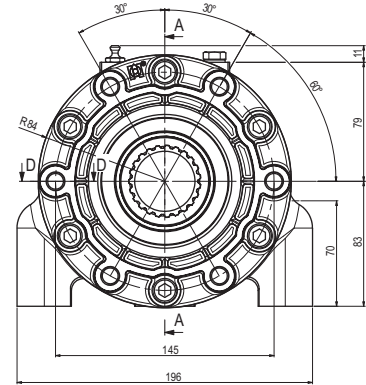
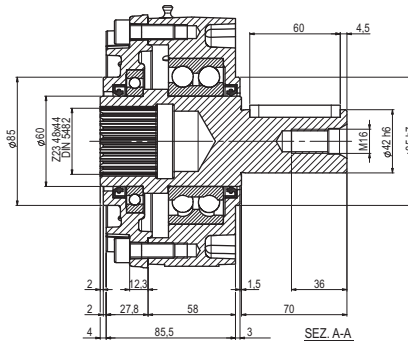
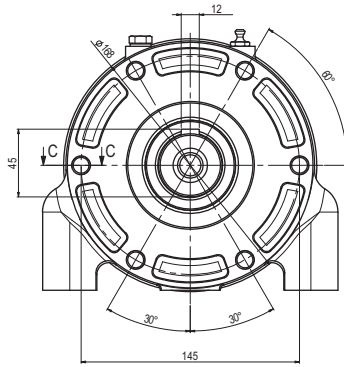


1

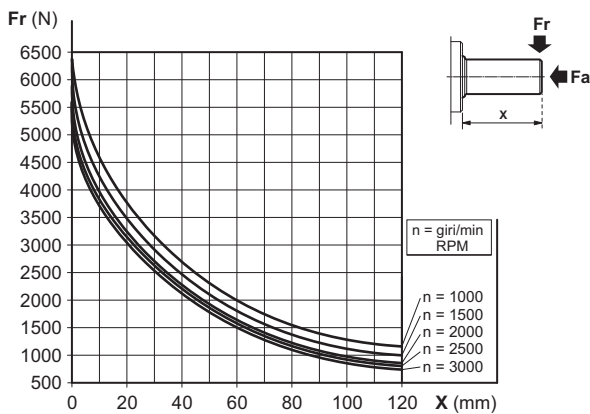
## UNIVERSALE SUPPORT, CYLINDRICAL SHAFT



The SU/Universale is suitable for driving a variety of pumps, motors, with belts, chain or other transmission, in which heavy combined loads take place. Flanges and couplings are required to connect the hydraulic pump or motor.



### MAXIMUM LOAD ON THE SHAFT



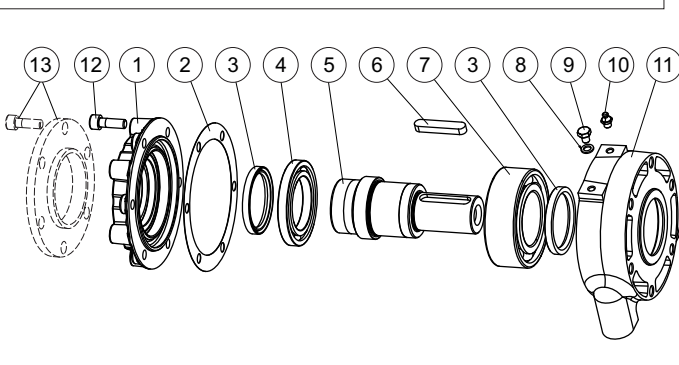
### FEATURES

Minimum radial load (*)	Fr = 450 N
Radial load (*)	See graphic
Axial load (*)	Fa ≤ Fr • 0,8
Max. revolutions per minute	3500 RPM
Life (*)	3500 hours
Max. working temperature	70 °C
Grease quantity	81 ÷ 118.5 gr
Type of grease	DIN 51818 NLGI classe 2

(\*) Nominal values calculated according to ISO 281. For more information, contact our technical department.

### SPARE PARTS

Ref.	Code	Description	Q.ty
1	39030400	Cover	1
2	39200200	Join	1
3	44103600	Shaft seal 60x75x8	2
4	44005900	Bearing 16012 60x95x11	1
5	34207400	Shaft	1
6	Q27470413	Woodruff A12x8x60	1
7	44006100	Bearing 3212 60x110x36.5	1
8	Q51437008	Aluminium washer 8.5x14x1.5	1
9	Q26035090	Screw TEE M8x10	1
10	49101000	Grease nipple M8	1
11	39009200	Body	1
12	Q26075125	Screw TCEI M10x30	6
13	—	Fange kit - sect. 4.01	1



### ORDERING CODE

SU/UNIVERSALE

SU/UNIVERSALE = Belt pulley support

Series

Flanges sect. 4.01

<b>A</b>	SAE A	<b>F</b>	GR. 3.5
<b>B</b>	SAE B	<b>G</b>	GR. 4
<b>C</b>	SAE C	<b>L</b>	ISO 1
<b>D</b>	GR. 2	<b>M</b>	ISO 2
<b>E</b>	GR. 3	<b>P</b>	ISO 3