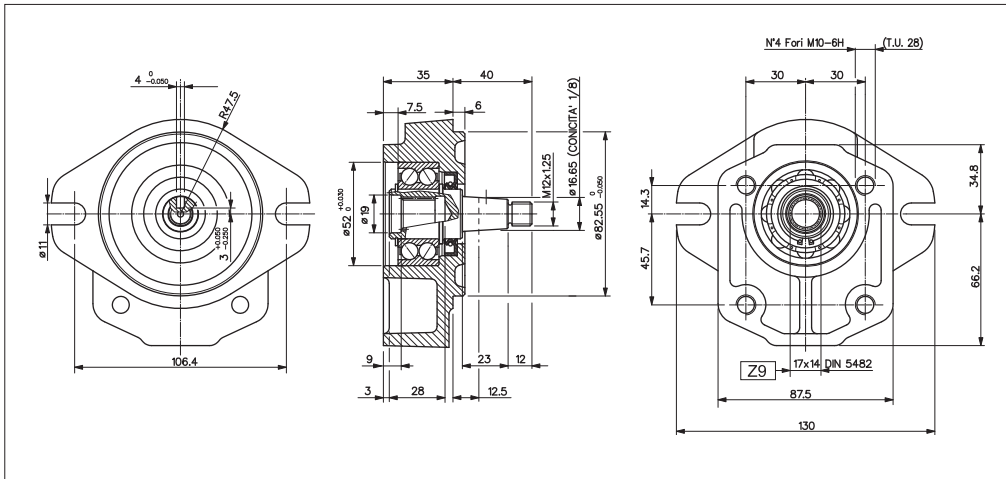


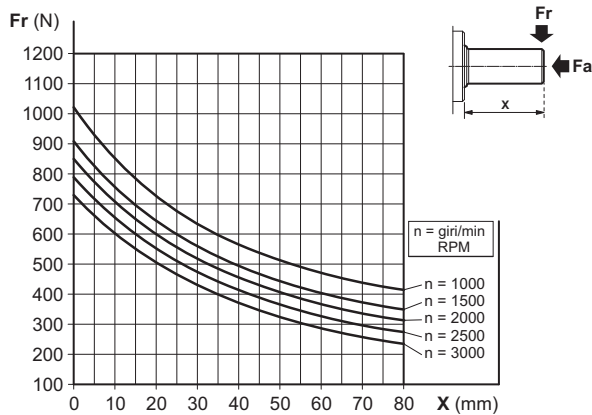
## SUPPORT WITH TAPERED SHAFT FOR FRONT FLANGE SAE A



The SU/SAEA-R is suitable for driving non-standard Gr. 2 pumps and motors with belts, chain or other transmission, in which heavy combined loads take place (axial and radial).

The pump/motor Gr. 2, is directly flanged and connected by splined coupling (coupling to be ordered separately).

### MAXIMUM LOAD ON THE SHAFT

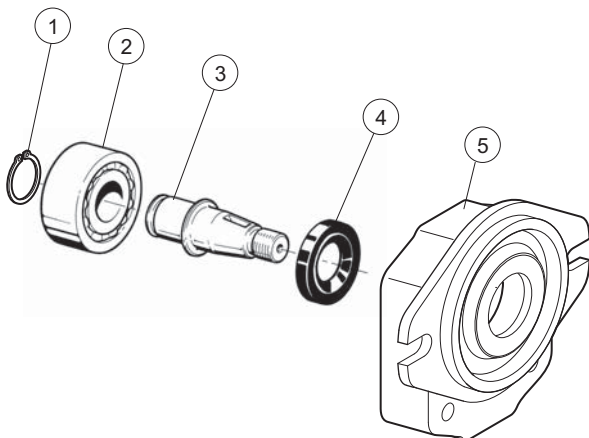


### FEATURES

Minimum radial load (*)	Fr = 100 N
Radial load (*)	See graphic
Axial load (*)	Fa ≤ Fr • 0,8
Max. revolutions per minute	4000 RPM
Life (*)	3500 hours
Max. working temperature	70 °C
Lubrication	Oil from the hydraulic drain pump
Type of grease	DIN 51818 NLGI classe 2

(\*) Nominal values calculated according to ISO 281. For more information, contact our technical department.

### SPARE PARTS



Ref.	Code	Description	Q.ty
1	<b>Q27150250</b>	Snap ring D.25	1
2	<b>44004100</b>	Bearing 3205 25x52x20.6	1
3	<b>34252900</b>	Shaft Gr.2	1
4	<b>44117600</b>	Shaft seal 25x42x6	1
5	<b>39035300</b>	Body	1

### ORDERING CODE

