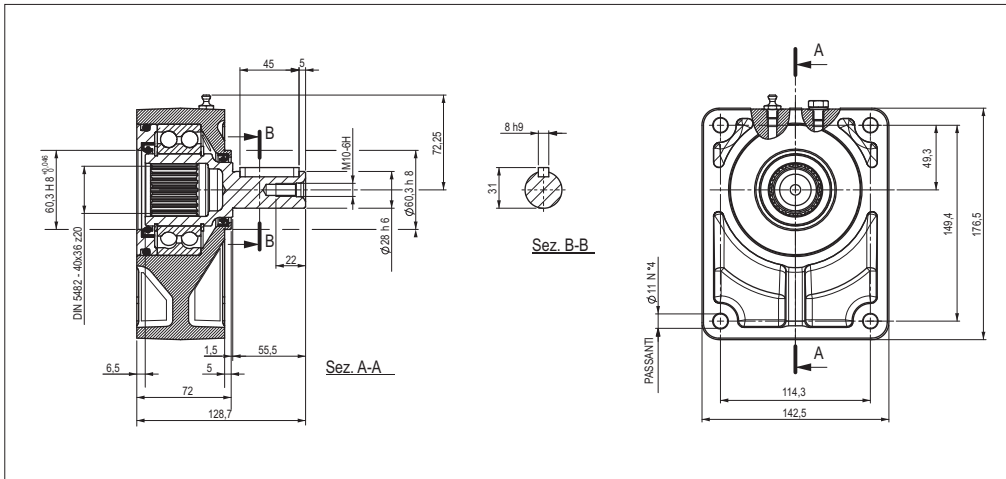


SUPPORT WITH CYLINDRICAL SHAFT FOR PUMP GR.3.5

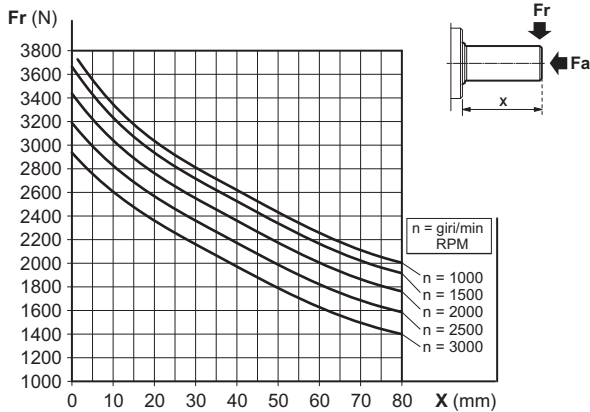


The SU/3.5-C (cylindrical shaft), is suitable for driving Gr. 3.5 hydraulic pumps and motors, with belts, chain or other transmission, in which heavy combined loads take place (axial and radial).

The pump/motor Gr. 3.5, is directly flanged and connected by splined coupling (coupling to be ordered separately).

On this version, there is a external grease nipple.

MAXIMUM LOAD ON THE SHAFT

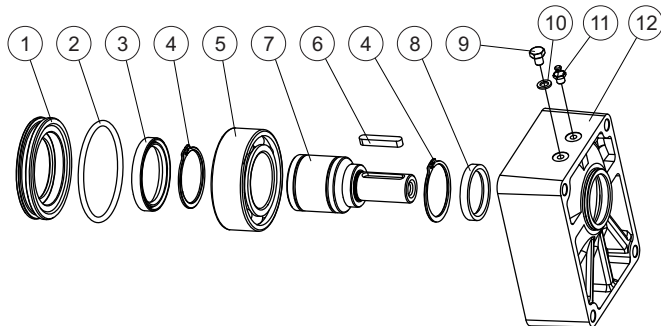


FEATURES

Minimum radial load (*)	Fr = 476 N
Radial load (*)	See graphic
Axial load (*)	Fa ≤ Fr • 0,8
Max. revolutions per minute	3500 RPM
Life (*)	3500 hours
Max. working temperature	70 °C
Grease quantity	24 ÷ 29 gr
Type of grease	DIN 51818 NLGI classe 2

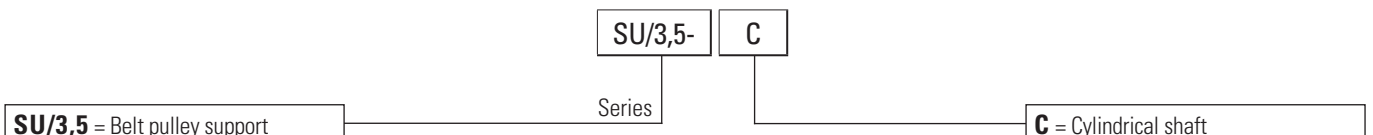
(*) Nominal values calculated according to ISO 281. For more information, contact our technical department.

SPARE PARTS

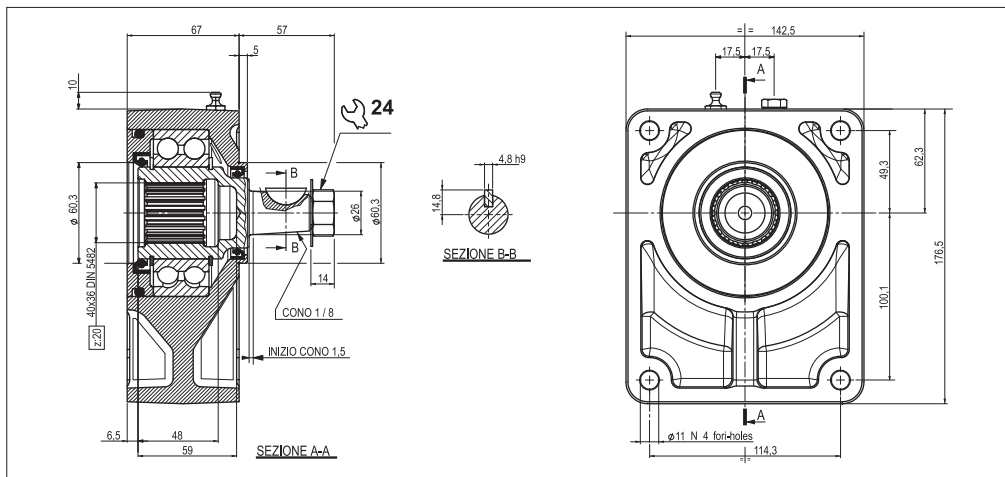


Ref.	Code	Description	Q.ty
1	39022000	Cover	1
2	Q25830345	O-Ring OR185 89.69x5.33	1
3	44104800	Shaft seal 55x72x10	1
4	Q27150550	Snap ring E55	2
5	44003000	Bearing 3211 55x100x33.3	1
6	Q27470306	Woodruff A8x7x45	1
7	34217800	Tapered shaft	1
8	44105400	Shaft seal 42x55x8	1
9	Q26035090	Screw TEE M8x10	1
10	Q51437008	Aluminium washer 8.5x14x1.5	1
11	49101000	Grease nipple M8	1
12	39021900	Body	1

ORDERING CODE

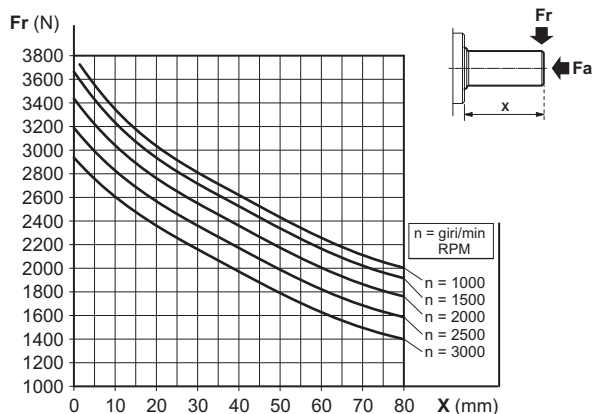


SUPPORT WITH TAPERED SHAFT FOR PUMP GR.3.5



The SU/3.5-C, is suitable for driving Gr. 3.5 hydraulic pumps and motors, with belts, chain or other transmission, in which heavy combined loads take place (axial and radial).
The pump/motor Gr. 3.5, is directly flanged and connected by splined coupling (coupling to be ordered separately).
On this version, there is a external grease nipple.

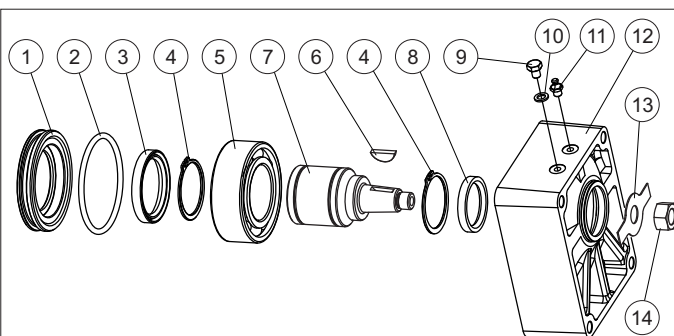
MAXIMUM LOAD ON THE SHAFT



FEATURES

Minimum radial load (*)	Fr = 476 N
Radial load (*)	See graphic
Axial load (*)	Fa ≤ Fr • 0,8
Max. revolutions per minute	3500 RPM
Life (*)	3500 hours
Max. working temperature	70 °C
Grease quantity	24 ÷ 29 gr
Type of grease	DIN 51818 NLGI classe 2

(*) Nominal values calculated according to ISO 281. For more information, contact our technical department.



SPARE PARTS

Rif.	Codice	Descrizione	Q.tà
1	39022000	Cover	1
2	Q25830345	O-Ring 89.69x5.33	1
3	44104800	Shaft seal 55x72x10	1

Rif.	Codice	Descrizione	Q.tà
4	Q27150550	Snap ring E55	2
5	44003000	Bearing 3211 55x100x33.3	1
6	43202200	Woodruff 4.8x10x25	1
7	34217900	Tapered shaft	1
8	44105400	Shaft seal 42x55x8	1
9	Q26035090	Screw TEE M8x10	1
10	Q51437008	Aluminium washer 8.5x14x1.5	1
11	49101000	Grease nipple M8	1
12	39021900	Body	1
13	42103500	Washer	1
14	Q26514142	Nut M16x1.5	1

ORDERING CODE

