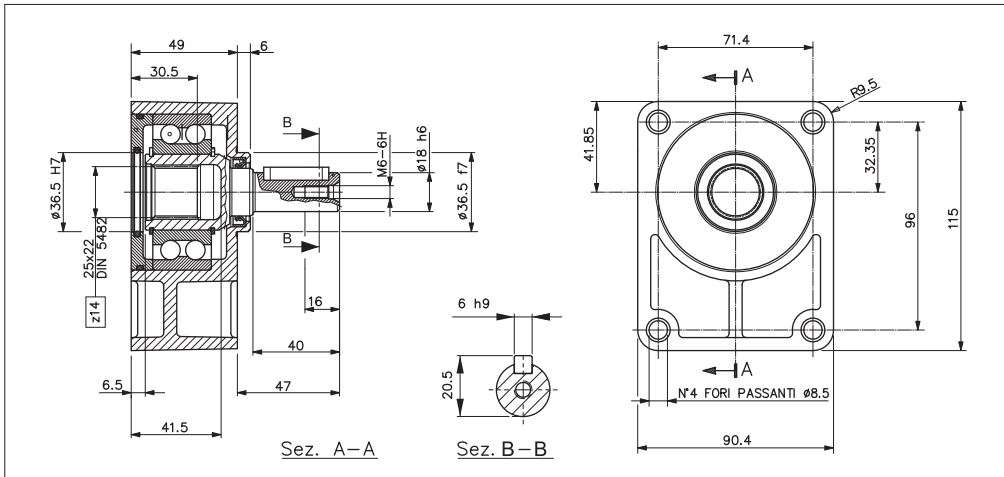
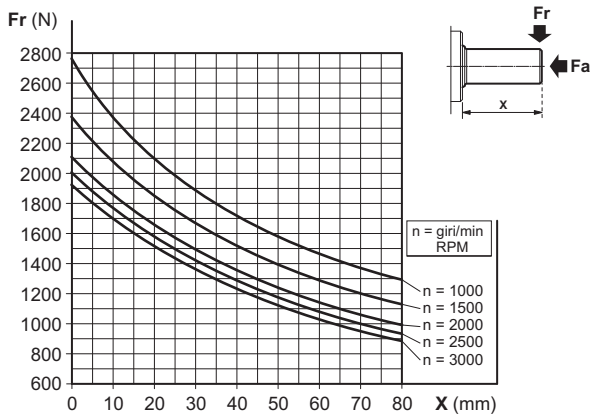


SUPPORT WITH CYLINDRICAL SHAFT FOR PUMP GR.2



The SU/2-C, is suitable for driving Gr.2 hydraulic pumps and motors, with belts, chain or other transmission, in which heavy combined loads take place (axial and radial). The pump/motor Gr. 2, is directly flanged and connected by splined coupling (coupling to be ordered separately).

MAXIMUM LOAD ON THE SHAFT

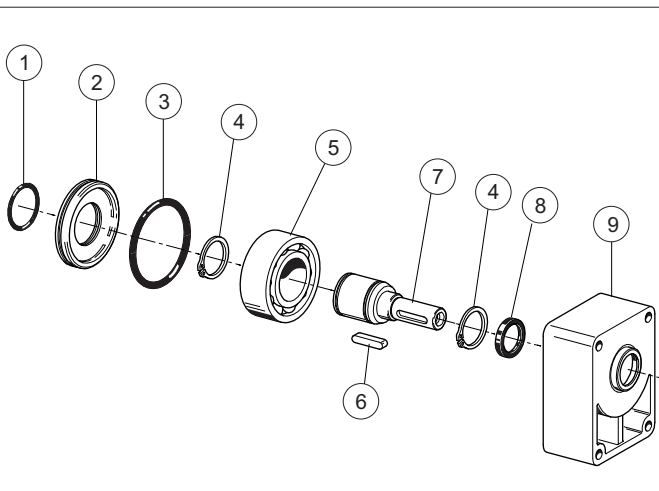


FEATURES

Minimum radial load (*)	Fr = 155 N
Radial load (*)	See graphic
Axial load (*)	Fa ≤ Fr • 0,8
Max. revolutions per minute	4000 RPM
Life (*)	3500 hours
Max. working temperature	70 °C
Grease quantity	16.5 ÷ 20.5 gr
Type of grease	DIN 51818 NLGI classe 2

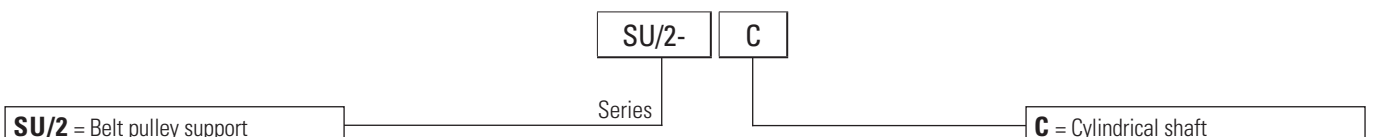
(*) Nominal values calculated according to ISO 281. For more information, contact our technical department.

SPARE PARTS

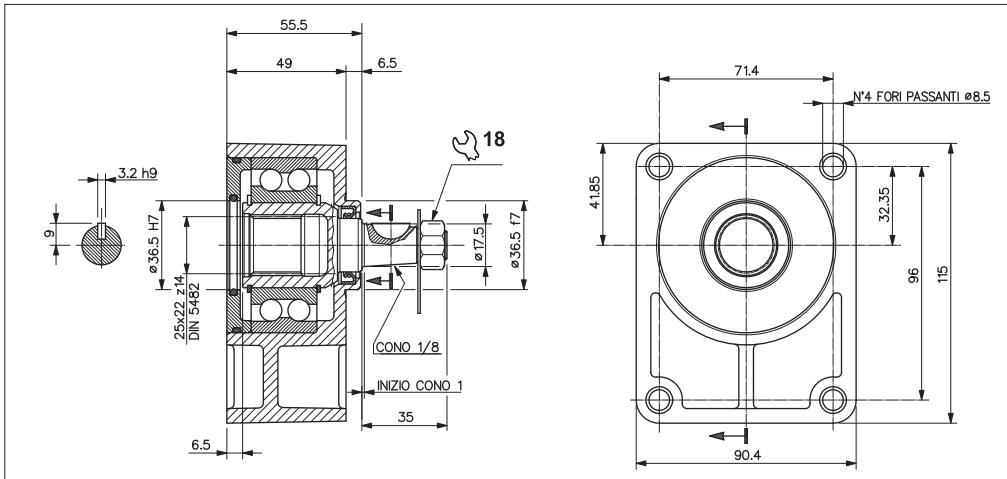


Ref.	Code	Description	Q.ty
1	Q25830112	O-Ring 36,17x2,62	1
2	39003700	Cover	1
3	Q25830133	O-Ring 64,77x2,62	1
4	Q27150350	Snap ring E35	2
5	44005300	Bearing 3207 35x72x27	1
6	Q27470211	Woodruff A 6x6x30	1
7	34203300	Cylindrical shaft	1
8	44101900	Shaft seal 22x32x6	1
9	39003500	Body	1

ORDERING CODE

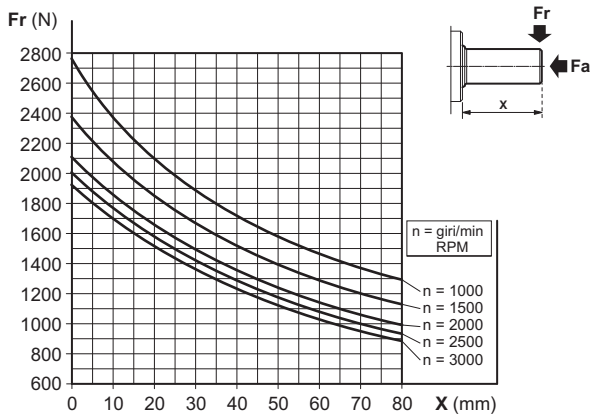


SUPPORT WITH TAPERED SHAFT FOR PUMP GR.2



The SU/2-D (tapered shaft), is suitable for driving Gr. 2 hydraulic pumps and motors, with belts, chain or other transmission, in which heavy combined loads take place (axial and radial). The pump/motor Gr. 2, is directly flanged and connected by splined coupling (coupling to be ordered separately).

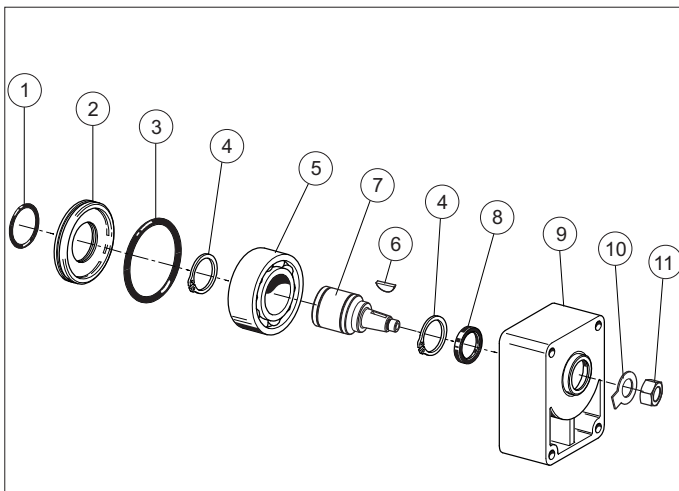
MAXIMUM LOAD ON THE SHAFT



FEATURES

Minimum radial load (*)	Fr = 155 N
Radial load (*)	See graphic
Axial load (*)	Fa ≤ Fr • 0,8
Max. revolutions per minute	4000 RPM
Life (*)	3500 hours
Max. working temperature	70 °C
Grease quantity	16.5 ÷ 20.5 gr
Type of grease	DIN 51818 NLGI classe 2

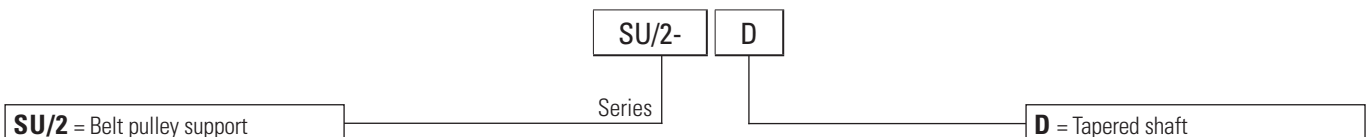
(*) Nominal values calculated according to ISO 281. For more information, contact our technical department.



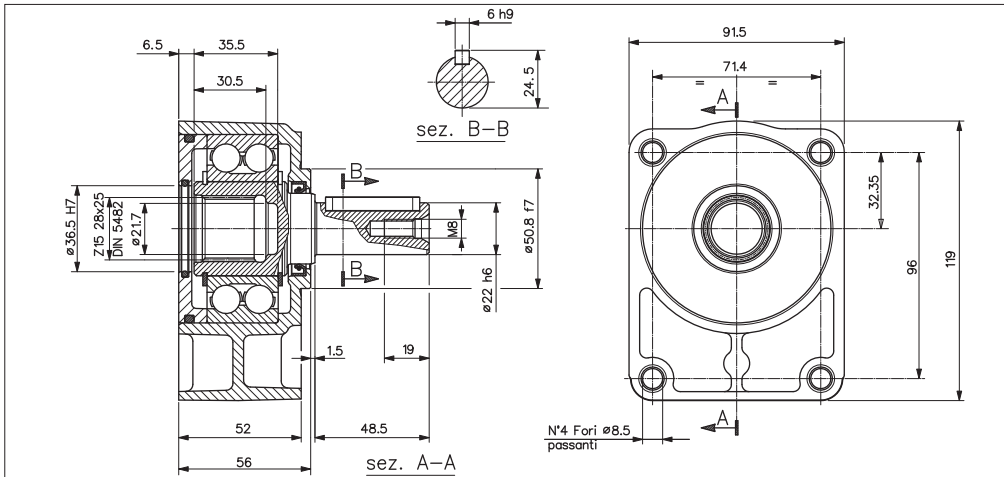
SPARE PARTS

Ref.	Code	Description	Q.ty
1	Q25830112	O-ring 36,14x2,62	1
2	39003700	Cover	1
3	Q25830133	O-ring 64,77x2,62	1
4	Q27150350	Snap ring D35	2
5	44005300	Bearing 3207 35x72x27	1
6	43203200	Woodruff 3,2x6,5	1
7	34221800	Tapered shaft	1
8	44101900	Shaft seal 22x32x6	1
9	39003500	Body	1
10	42101400	Washer	1
11	Q26514150	Nut M12x1,5	1

ORDERING CODE



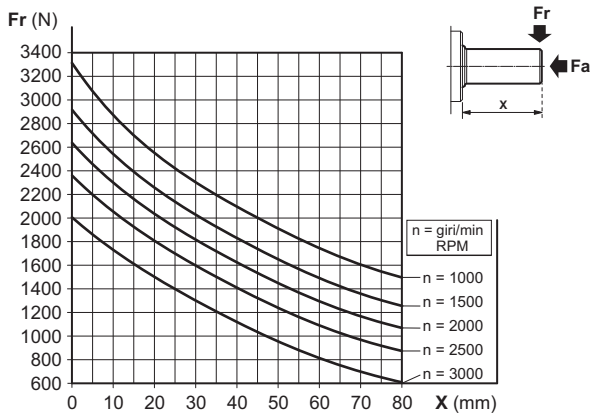
REINFORCED SUPPORT, CYLINDRICAL SHAFT FOR PUMP GR.2



The SUR/2-C, is suitable for driving Gr. 2 hydraulic pumps and motors, with belts, chain or other transmission, in which heavy combined loads take place (axial and radial).

The pump/motor Gr. 2, is directly flanged and connected by splined coupling (coupling to be ordered separately).

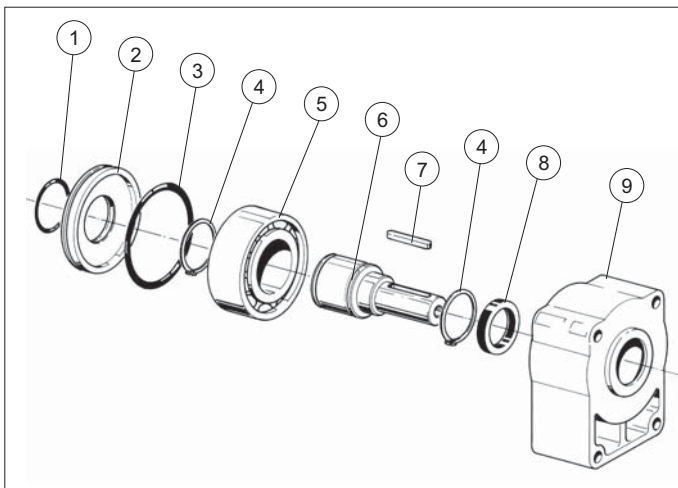
MAXIMUM LOAD ON THE SHAFT



FEATURES

Minimum radial load (*)	Fr = 277 N
Radial load (*)	See graphic
Axial load (*)	Fa ≤ Fr • 0,8
Max. revolutions per minute	3500 RPM
Life (*)	3500 hours
Max. working temperature	70 °C
Grease quantity	24 ÷ 31.5 gr
Type of grease	DIN 51818 NLGI classe 2

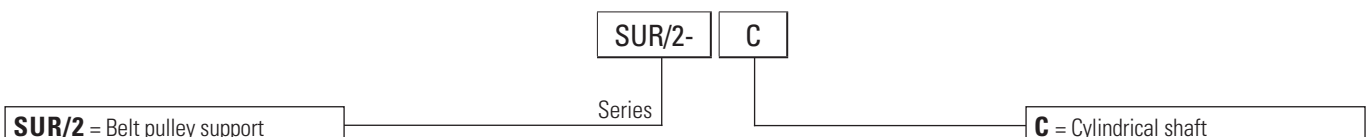
(*) Nominal values calculated according to ISO 281. For more information, contact our technical department.



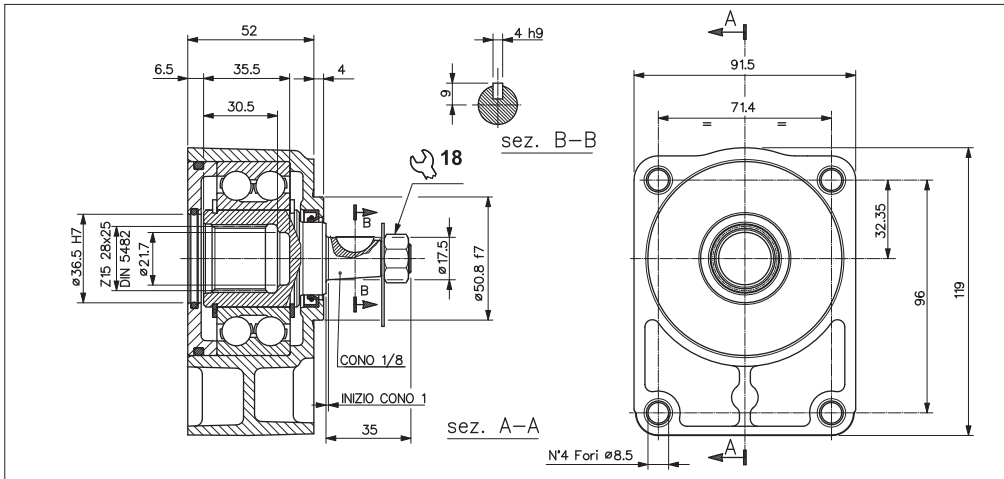
SPARE PARTS

Ref.	Code	Description	Q.ty
1	Q25830112	O-Ring 36.14x2.62	1
2	39003600	Reinforced cover	1
3	Q25830232	O-Ring 73.03x3.53	1
4	Q27150400	Snap ring E40	2
5	44005400	Bearing 3208 40x80x30.2	1
6	34200800	Cylindrical shaft	1
7	Q27470210	Woodruff A6x6x40	1
8	44101800	Shaft seal 30x40x7	1
9	39003400	Reinforced body	1

ORDERING CODE

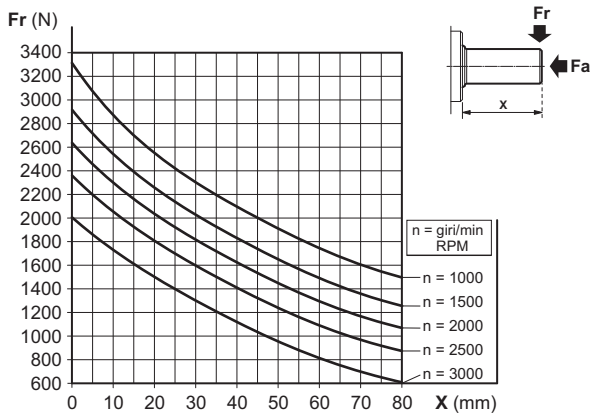


REINFORCED SUPPORT, TAPERED SHAFT FOR PUMP GR.2



The SUR/2-D (reinforced support, tapered shaft), is suitable for driving Gr. 2 hydraulic pumps and motors, with belts, chain or other transmission, in which heavy combined loads take place (axial and radial). The pump/motor Gr. 2, is directly flanged and connected by splined coupling (coupling to be ordered separately).

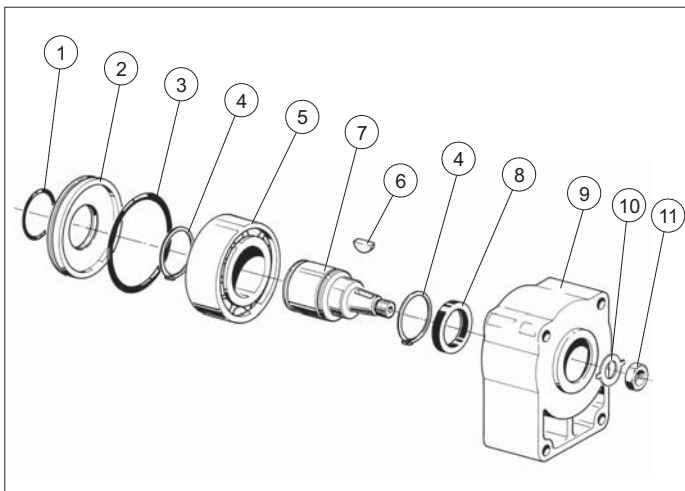
MAXIMUM LOAD ON THE SHAFT



FEATURES

Minimum radial load (*)	Fr = 277 N
Radial load (*)	See graphic
Axial load (*)	Fa ≤ Fr • 0,8
Max. revolutions per minute	3500 RPM
Life (*)	3500 hours
Max. working temperature	70 °C
Grease quantity	24 ÷ 31.5 gr
Type of grease	DIN 51818 NLGI classe 2

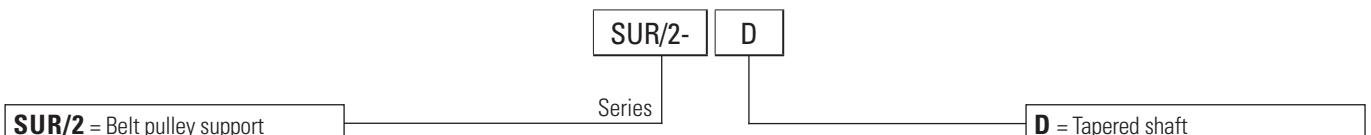
(*) Nominal values calculated according to ISO 281. For more information, contact our technical department.



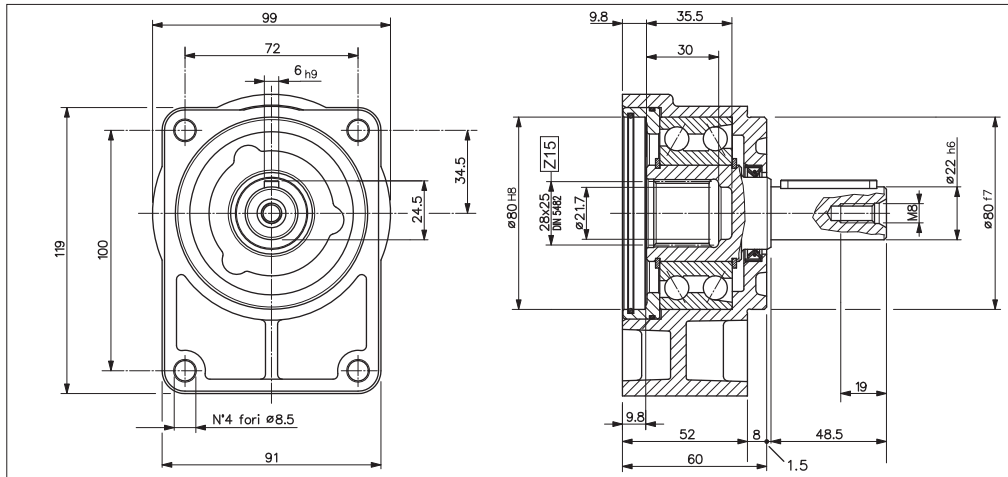
SPARE PARTS

Ref.	Code	Description	Q.ty
1	Q25830112	O-Ring 36.17x2.62	1
2	39003600	Reinforced cover	1
3	Q25830232	O-Ring 73.03x3.53	1
4	Q27150400	Snap ring D.40	2
5	44005400	Bearing 3208 40x80x30.2	1
6	Q27500072	Woodruff 4x6.5	1
7	34200900	Tapered shaft	1
8	44101800	Shaft seal 30x40x7	1
9	39003400	Reinforced body	1
10	42101400	Washer	1
11	Q26514150	Nut M12x1.5	1

ORDERING CODE



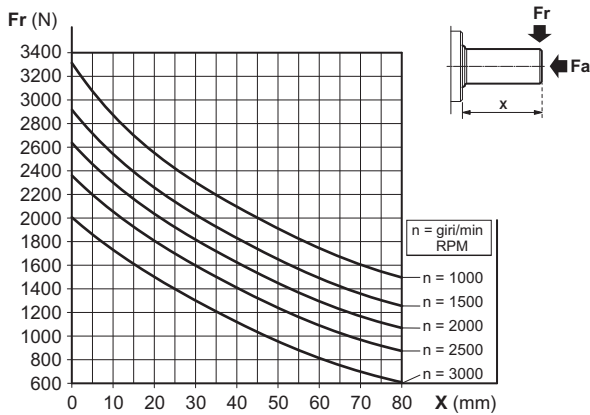
SUPPORT WITH CYLINDRICAL SHAFT FOR PUMP GR.2 BOSCH



The SU/ZF-C is suitable for driving Gr.2 Bosch pumps and motors with belts, chain or other transmission, in which heavy combined loads take place (axial and radial).

The pump/motor Gr. 2 Bosch, is directly flanged and connected by splined coupling (coupling to be ordered separately).

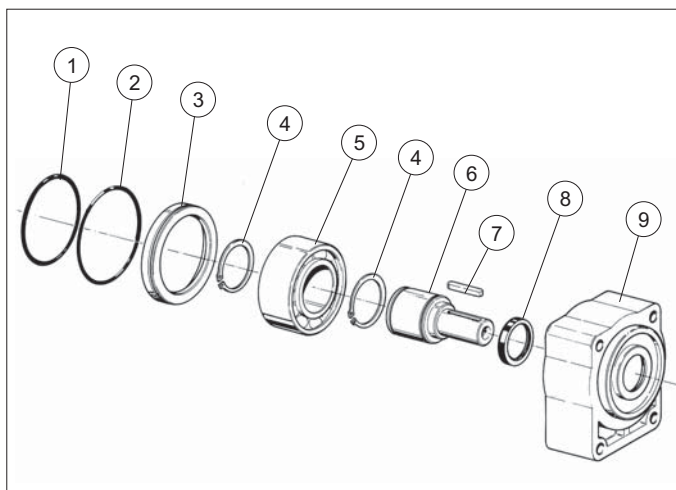
MAXIMUM LOAD ON THE SHAFT



FEATURES

Minimum radial load (*)	Fr = 277 N
Radial load (*)	See graphic
Axial load (*)	Fa ≤ Fr • 0,8
Max. revolutions per minute	3500 RPM
Life (*)	3500 hours
Max. working temperature	70 °C
Grease quantity	21 ÷ 27 gr
Type of grease	DIN 51818 NLGI classe 2

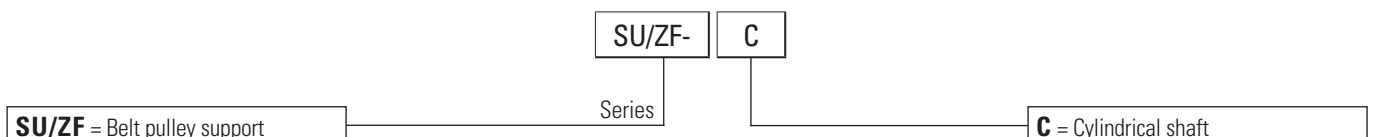
(*) Nominal values calculated according to ISO 281. For more information, contact our technical department.



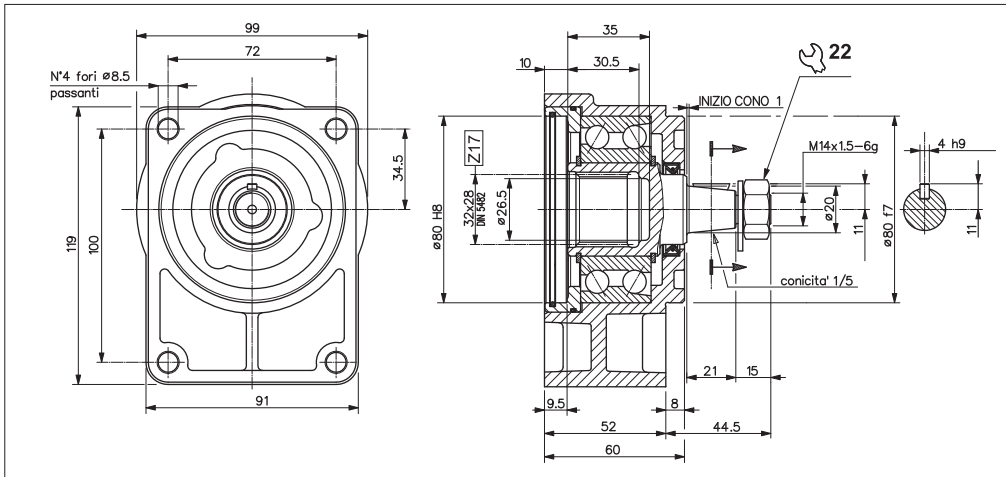
SPARE PARTS

Ref.	Code	Description	Q.ty
1	Q25860041	O-Ring 80x2	1
2	Q25830056	O-Ring 82.27x1.78	1
3	39001800	Cover	1
4	Q27150400	Snap ring	2
5	44005400	Bearing 3208 40x80x30.2	1
6	34200800	Cylindrical shaft	1
7	Q27470210	Woodruff A6x6x40	1
8	44101800	Shaft seal 30x40x7	1
9	39001700	Body	1

ORDERING CODE



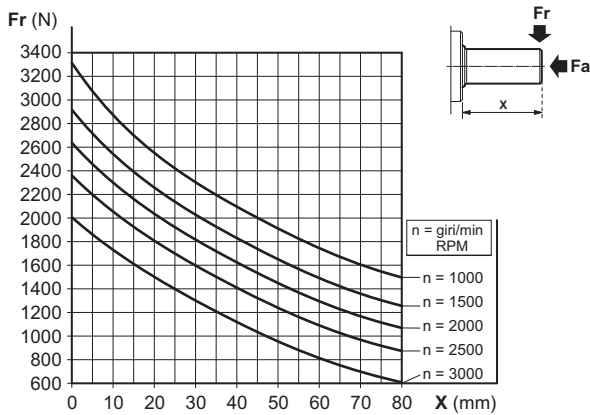
SUPPORT WITH TAPERED SHAFT FOR PUMP GR.2 BOSCH



The SU/ZF-D is suitable for driving Gr.2 Bosch pumps and motors with belts, chain or other transmission, in which heavy combined loads take place (axial and radial).

The pump/motor Gr. 2 Bosch, is directly flanged and connected by splined coupling (coupling to be ordered separately).

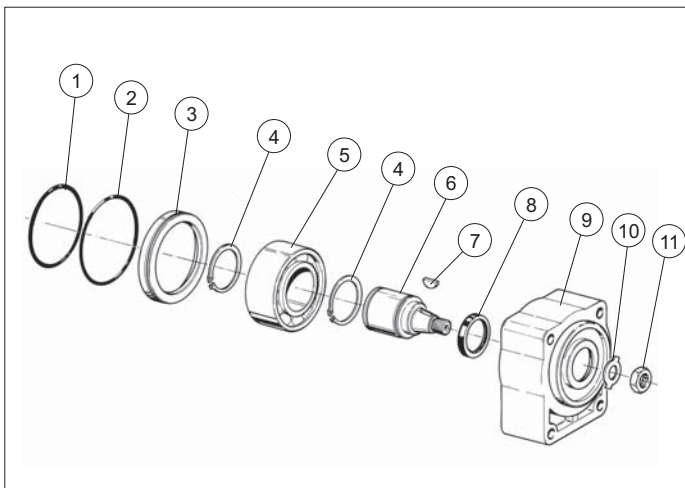
MAXIMUM LOAD ON THE SHAFT



FEATURES

Minimum radial load (*)	Fr = 277 N
Radial load (*)	See graphic
Axial load (*)	Fa ≤ Fr • 0,8
Max. revolutions per minute	3500 RPM
Life (*)	3500 hours
Max. working temperature	70 °C
Grease quantity	21 ÷ 27 gr
Type of grease	DIN 51818 NLGI classe 2

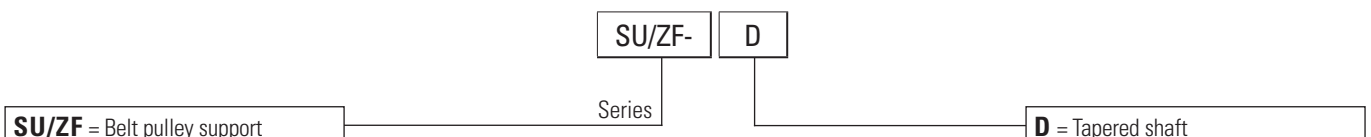
(*) Nominal values calculated according to ISO 281. For more information, contact our technical department.



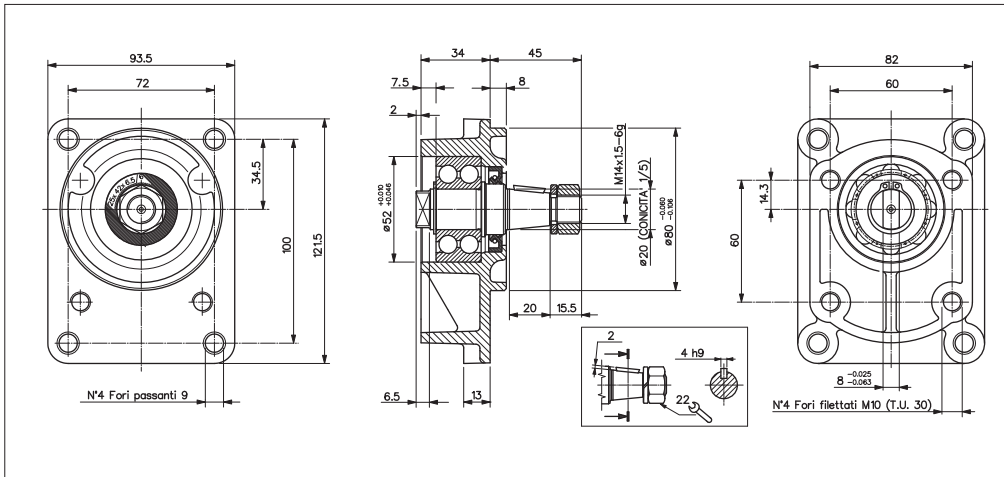
SPARE PARTS

Ref.	Code	Description	Q.ty
1	Q25860041	O-Ring 80x2	1
2	Q25830056	O-Ring 82.27x1.78	1
3	39001800	Cover	1
4	Q27150400	Snap ring D.40	2
5	44005400	Bearing 3208 40x80x30.2	1
6	34201500	Tapered shaft	1
7	Q27500072	Woodruff 4x6,5	1
8	44101800	Shaft seal 30x40x7	1
9	39001700	Body	1
10	42101500	Washer	1
11	Q26514141	Nut M14x1,5	1

ORDERING CODE

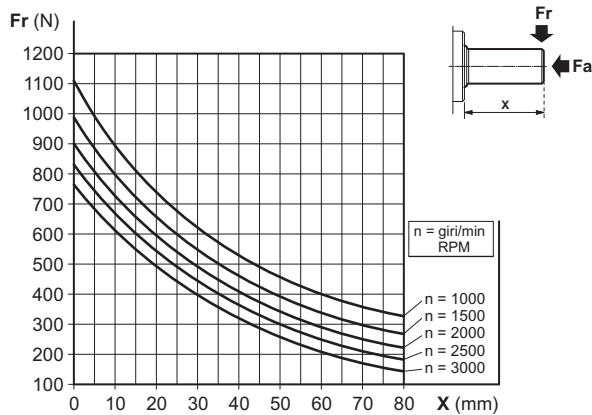


SUPPORT WITH TAPERED SHAFT FOR FRONT FLANGE GR.2 BOSCH



The SU/52-80-P is suitable for driving non-standard Gr. 2 pumps and motors with belts, chain or other transmission, in which heavy combined loads take place (axial and radial). The pump/motor Gr. 2, is directly flanged and connected by tang shaft for Oldam coupling (coupling not supplied).

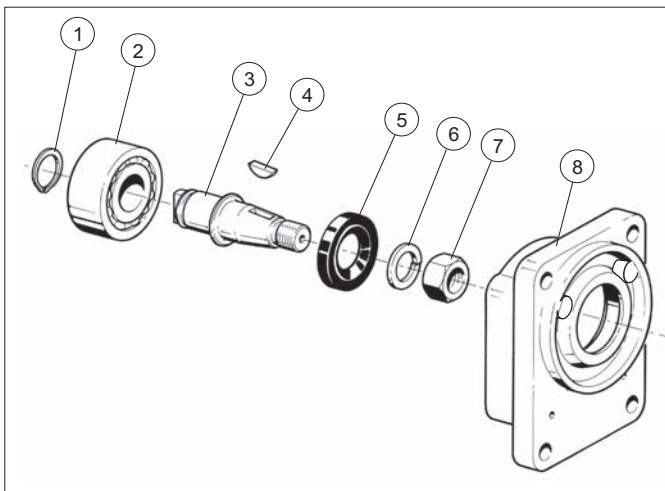
MAXIMUM LOAD ON THE SHAFT



FEATURES

Minimum radial load (*)	Fr = 90 N
Radial load (*)	See graphic
Axial load (*)	Fa ≤ Fr • 0,8
Max. revolutions per minute	4000 RPM
Life (*)	3500 hours
Max. working temperature	70 °C
Lubrication	Oil from the hydraulic drain pump
Type of grease	DIN 51818 NLGI classe 2

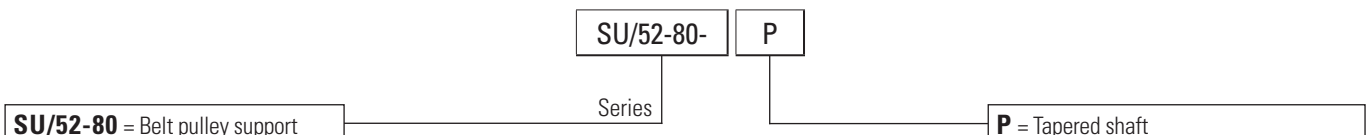
(*) Nominal values calculated according to ISO 281. For more information, contact our technical department.



SPARE PARTS

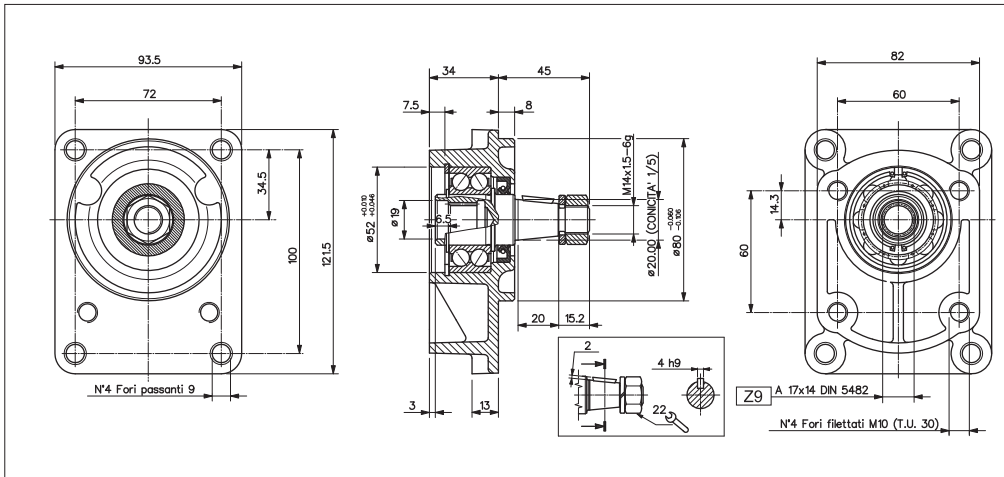
Ref.	Code	Description	Q.ty
1	Q27150200	Snap ring D.20	1
2	44004000	Bearing 3304 20x52x22.2	1
3	34230300	Shaft	1
4	Q27500072	Woodruff 4x6.5	1
5	44117600	Shaft seal 25x42x6/6.5	1
6	Q26843022	Washer 15x24x3	1
7	Q26514141	Nut M14x1.5	1
8	39034700	Body	1

ORDERING CODE



1

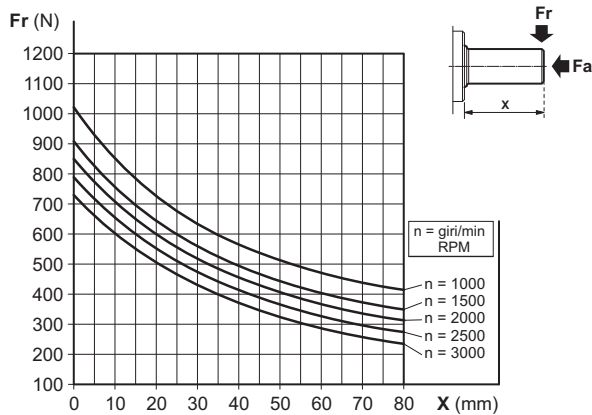
SUPPORT WITH TAPERED SHAFT FOR FRONT FLANGE GR.2 BOSCH



The SU/52-80-R is suitable for driving non-standard Gr. 2 pumps and motors with belts, chain or other transmission, in which heavy combined loads take place (axial and radial).

The pump/motor Gr. 2, is directly flanged and connected by splined coupling (coupling to be ordered separately).

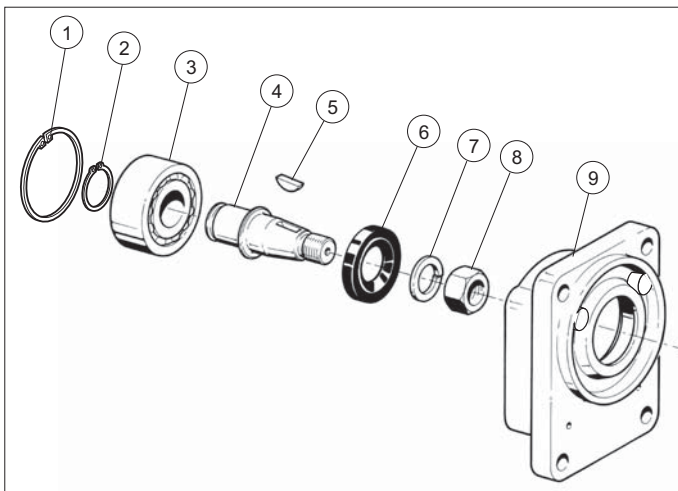
MAXIMUM LOAD ON THE SHAFT



FEATURES

Minimum radial load (*)	Fr = 90 N
Radial load (*)	See graphic
Axial load (*)	Fa ≤ Fr • 0,8
Max. revolutions per minute	4000 RPM
Life (*)	3500 hours
Max. working temperature	70 °C
Lubrication	Oil from the hydraulic drain pump
Type of grease	DIN 51818 NLGI classe 2

(*) Nominal values calculated according to ISO 281. For more information, contact our technical department.



SPARE PARTS

Ref.	Code	Description	Q.ty
1	Q27160052	Seeger D.52	1
2	Q27150250	Seeger D.25	1
3	44004100	Bearing 25x52x20.6	1
4	34242500	Shaft	1
5	Q27500072	Woodruff 4x6.5	1
6	44117600	Shaft seal 25x42x6/6.5	1
7	Q26843022	Washer 15x24x3	1
8	Q26514141	Nut M14x1.5	1
9	39043500	Body	1

ORDERING CODE

SU/52-80-

R

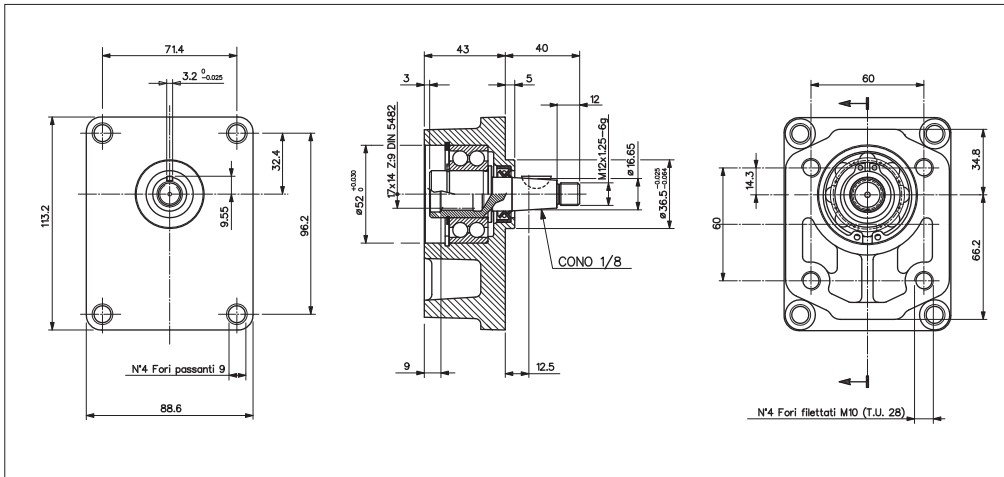
Series

SU/52-80 = Belt pulley support

R = Tapered shaft

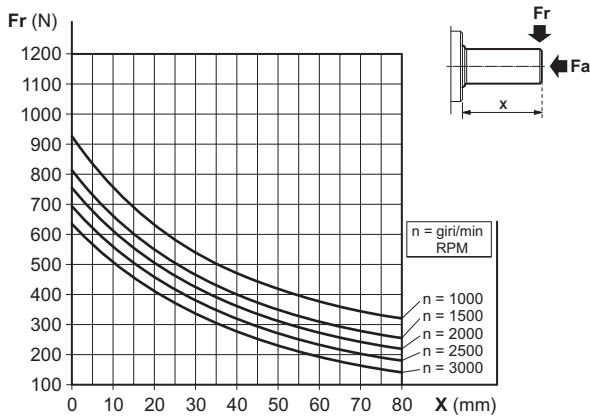
1

SUPPORT WITH TAPERED SHAFT FOR FRONT FLANGE GR.2



The SU/20-86-F is suitable for driving non-standard Gr. 2 pumps and motors with belts, chain or other transmission, in which heavy combined loads take place (axial and radial). The pump/motor Gr. 2, is directly flanged and connected by splined coupling (coupling to be ordered separately).

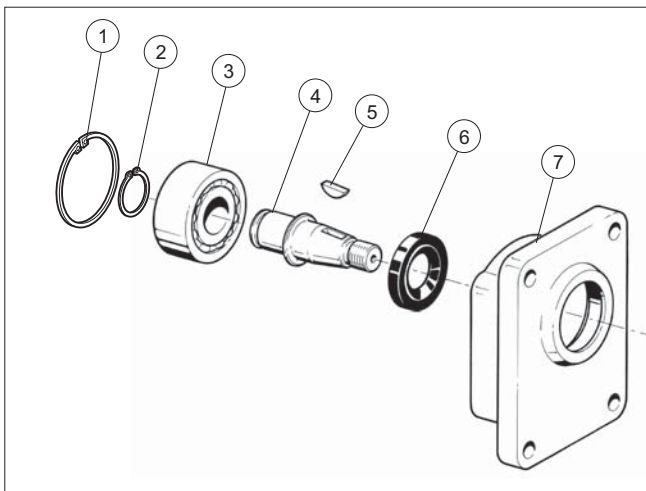
MAXIMUM LOAD ON THE SHAFT



FEATURES

Minimum radial load (*)	Fr = 100 N
Radial load (*)	See graphic
Axial load (*)	Fa ≤ Fr • 0,8
Max. revolutions per minute	4000 RPM
Life (*)	3500 hours
Max. working temperature	70 °C
Lubrication	Oil from the hydraulic drain pump
Type of grease	DIN 51818 NLGI classe 2

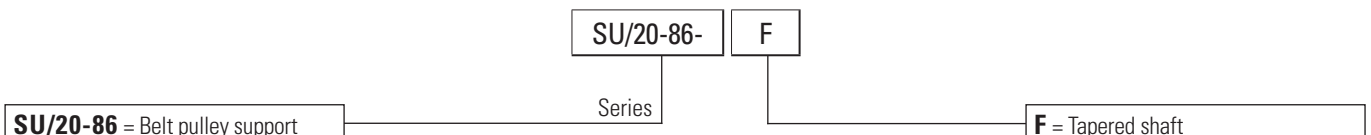
(*) Nominal values calculated according to ISO 281. For more information, contact our technical department.



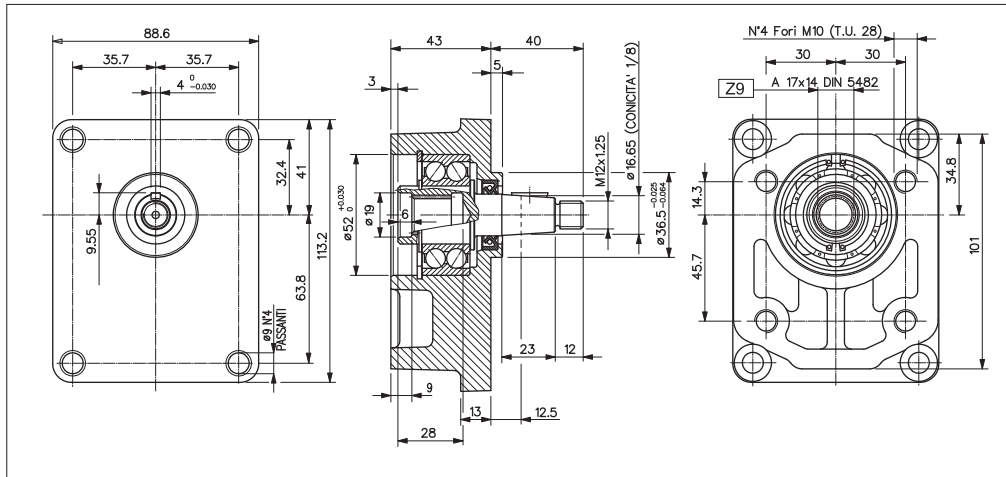
SPARE PARTS

Ref.	Code	Description	Q.ty
1	Q27150250	Snap ring D.25	1
2	Q27160052	Snap ring D.52	1
3	44004100	Bearing 3205 25x52x20.6	1
4	34238000	Shaft Gr.2	1
5	43203200	Woodruff 3.2x6.5	1
6	44113500	Shaft seal 18x30x7/7.5	1
7	39040000	Body	1

ORDERING CODE

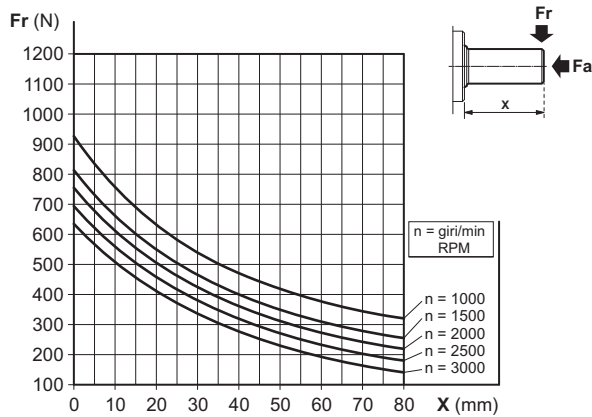


SUPPORT WITH TAPERED SHAFT FOR FRONT FLANGE GR.2T



The SU/20-86-E is suitable for driving non-standard Gr. 2 pumps and motors with belts, chain or other transmission, in which heavy combined loads take place (axial and radial). The pump/motor Gr. 2, is directly flanged and connected by splined coupling (coupling to be ordered separately).

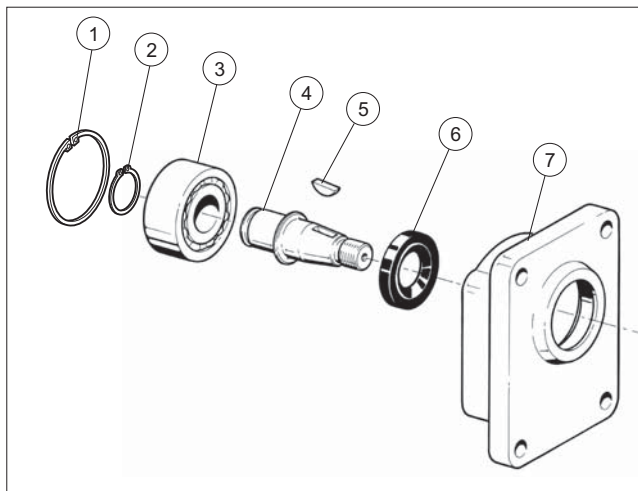
MAXIMUM LOAD ON THE SHAFT



FEATURES

Minimum radial load (*)	Fr = 100 N
Radial load (*)	See graphic
Axial load (*)	Fa ≤ Fr • 0,8
Max. revolutions per minute	4000 RPM
Life (*)	3500 hours
Max. working temperature	70 °C
Lubrication	Oil from the hydraulic drain pump
Type of grease	DIN 51818 NLGI classe 2

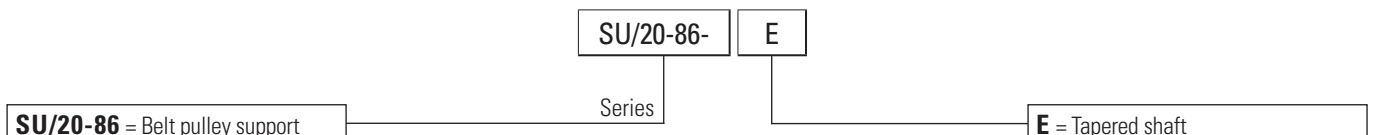
(*) Nominal values calculated according to ISO 281. For more information, contact our technical department.



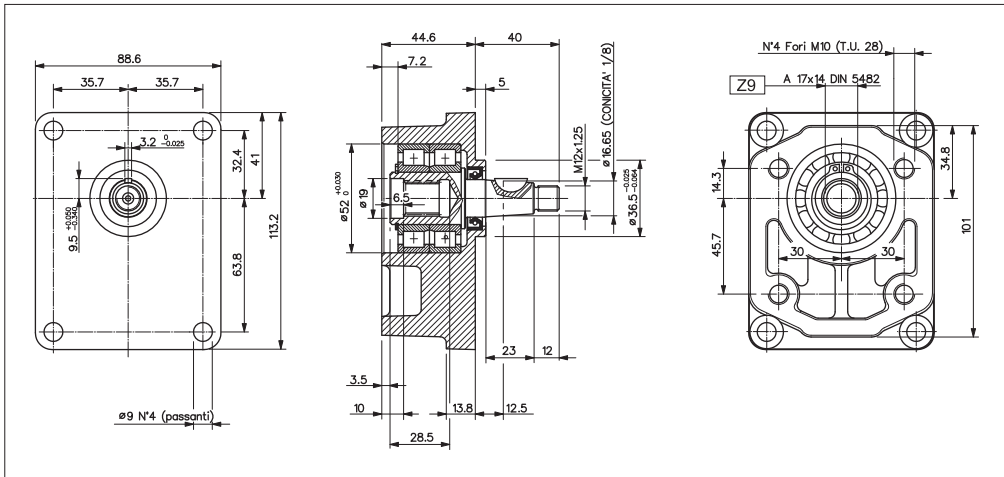
SPARE PARTS

Ref.	Code	Description	Q.ty
1	Q27160052	Snap ring D.52	1
2	Q27150250	Snap ring D.25	1
3	44004100	Bearing 25x52x20.6	1
4	34241100	Shaft	1
5	Q27500072	Woodruff 4x6.5	1
6	44113500	Shaft seal 18x30x7/7.5	1
7	39040000	Body	1

ORDERING CODE



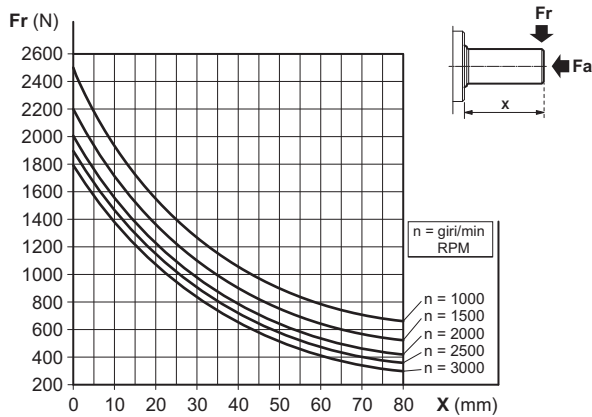
REINFORCED SUPPORT, TAPERED SHAFT FOR FRONT FLANGE GR.2



The SU/20-86-H is suitable for driving non-standard Gr. 2 pumps and motors with belts, chain or other transmission, in which heavy combined loads take place (axial and radial).

The pump/motor Gr. 2, is directly flanged and connected by splined coupling (coupling to be ordered separately).

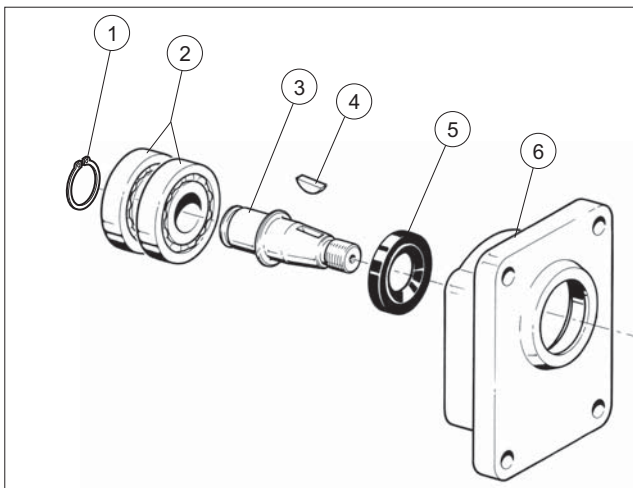
MAXIMUM LOAD ON THE SHAFT



FEATURES

Minimum radial load (*)	Fr = 155 N
Radial load (*)	See graphic
Axial load (*)	Fa ≤ Fr • 0,2
Max. revolutions per minute	4000 RPM
Life (*)	3500 hours
Max. working temperature	70 °C
Lubrication	Oil from the hydraulic drain pump
Type of grease	DIN 51818 NLGI classe 2

(*) Nominal values calculated according to ISO 281. For more information, contact our technical department.



SPARE PARTS

Ref.	Code	Description	Q.ty
1	Q27150250	Seeger D.26	1
2	44004800	Bearing 25x52x15	2
3	34254100	Shaft	1
4	43203200	Woodruff 3.2x6.5	1
5	44113500	Shaft seal 18x30x7/7.5	1
6	39045500	Body	1

ORDERING CODE

