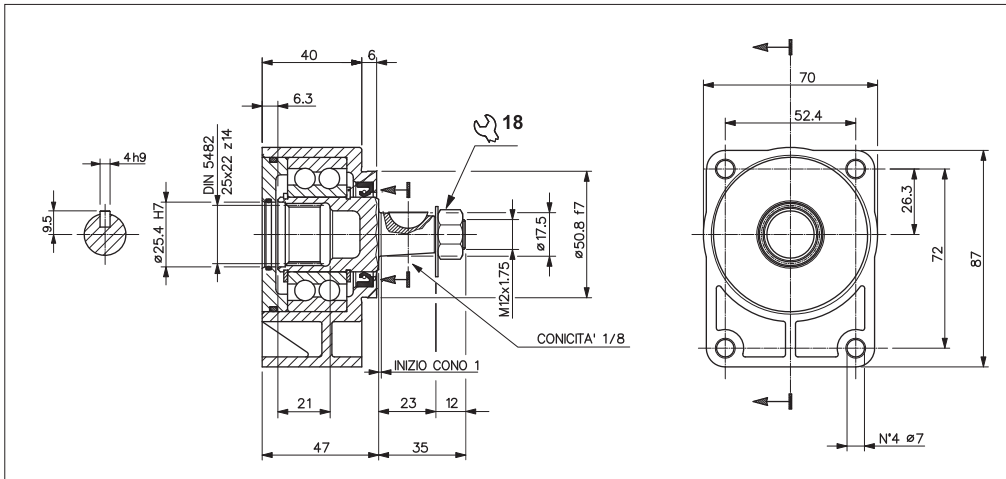
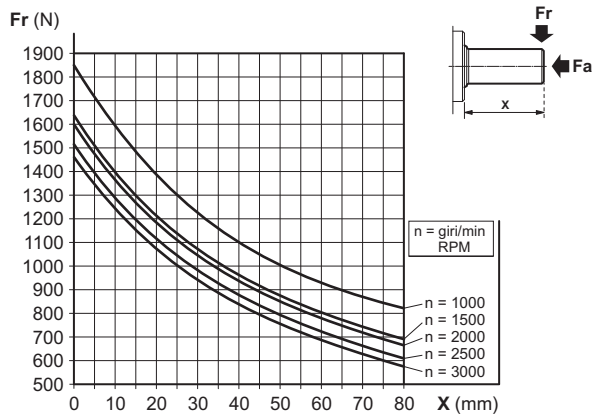


SUPPORT WITH TAPERED SHAFT FOR PUMP GR.1



The SU/1-D, is suitable for driving Gr.1 hydraulic pumps and motors, with belts, chain or other transmission, in which heavy combined loads take place (axial and radial). The pump/motor Gr. 1, is directly flanged and connected by splined coupling (coupling to be ordered separately).

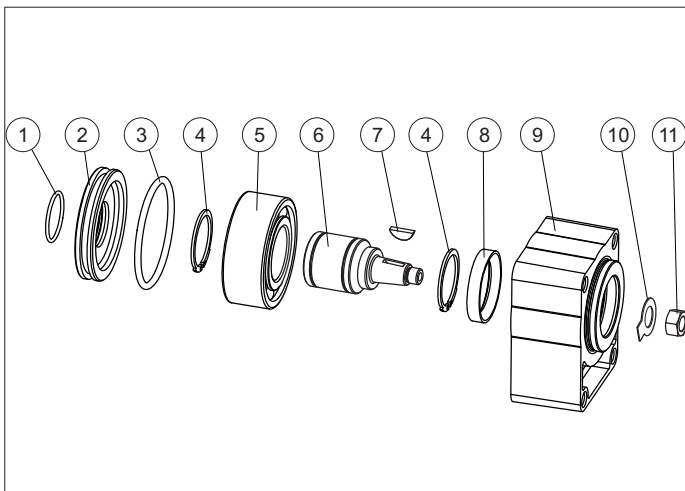
MAXIMUM LOAD ON THE SHAFT



FEATURES

Minimum radial load (*)	Fr = 130 N
Radial load (*)	See graphic
Axial load (*)	Fa ≤ Fr • 0,8
Max. revolutions per minute	4000 RPM
Life (*)	3500 hours
Max. working temperature	70 °C
Grease quantity	10 ÷ 12 gr
Type of grease	DIN 51818 NLGI classe 2

(*) Nominal values calculated according to ISO 281. For more information, contact our technical department.



SPARE PARTS

Ref.	Code	Description	Q.ty
1	Q25830030	O-Ring 25.12x1.78	1
2	39000500	Cover	1
3	Q25830215	O-Ring 55.56x3.53	1
4	Q27150300	Snap ring D.30	2
5	44005200	Bearing 3206 30x62x23.8	1
6	34200500	Tapered shaft	1
7	Q27500072	Woodruff 4x6.5	1
8	44101800	Shaft seal 30x40x7	1
9	39000400	Body	1
10	42101400	Washer	1
11	Q26514070	Nut M12	1

ORDERING CODE

