

Riduttori ad assi paralleli

Planetary helical gearboxes / Planeten-Stirradgetriebe / Réducteurs à arbres cylindriques / Reductores con ejes paralelos / Redutores de eixos paralelos

	$n_1 = 1500 \text{ min}^{-1}$			$n_1 = 1000 \text{ min}^{-1}$			$n_1 = 750 \text{ min}^{-1}$			T_{2ISO} [Nm]	P_T [kW]	
	i_{eff}	n_2 [min^{-1}]	P_{N1} [kW]	T_{N2} [Nm]	n_2 [min^{-1}]	P_{N1} [kW]	T_{N2} [Nm]	n_2 [min^{-1}]	P_{N1} [kW]			T_{N2} [Nm]
PH 228	18.4	82	142.5	16250	54	107.1	18350	41	87.4	20000	34400	110
	22.7	66	119.6	16900	44	90.0	19100	33	73.6	20850	35600	
	26.1	57	106.4	17300	38	80.0	19550	29	65.3	21300	32000	
PH 328	64.3	23.3	60.1	23750	15.6	45.1	26800	11.7	36.8	29200	35700	100
	75.8	19.8	53.5	24950	13.2	40.1	28150	9.9	32.8	30700	35700	
	79.5	18.9	50.5	24700	12.6	37.9	27900	9.4	31.0	30400	35600	
	91.5	16.4	44.8	25250	10.9	33.4	28300	8.2	25.6	28850	32000	
	93.9	16.0	44.9	25950	10.7	33.7	29300	8.0	27.6	31950	35600	
	94.9	15.8	45.7	26700	10.5	34.3	30150	7.9	28.0	32850	35700	
	108.0	13.9	39.9	26550	9.3	28.6	28600	6.9	21.9	29150	32000	
	110.2	13.6	41.1	27900	9.1	30.9	31500	6.8	25.2	34350	35700	
	117.5	12.8	38.3	27750	8.5	28.8	31350	6.4	22.7	32900	35600	
	133.1	11.3	36.0	29550	7.5	27.0	33350	5.6	21.9	36100	35700	
	135.2	11.1	34.0	28300	7.4	23.2	29000	5.5	17.7	29550	32000	
	136.4	11.0	34.5	29000	7.3	25.8	32650	5.5	19.7	33200	35600	
	156.9	9.6	29.5	28550	6.4	20.2	29300	4.8	15.4	29800	32000	
	164.8	9.1	30.2	30700	6.1	21.6	33000	4.6	16.5	33600	35600	
189.6	7.9	24.7	28900	5.3	16.9	29650	4.0	12.9	30150	32000		
PH 428	197.9	7.6	27.3	33020	5.1	20.6	37290	3.8	16.4	39700	35700	90
	224.9	6.7	25.0	34310	4.4	18.8	38750	3.3	14.6	40020	35700	
	265.4	5.7	22.3	36060	3.8	16.3	39710	2.8	12.5	40440	35700	
	278.4	5.4	19.4	33020	3.6	13.3	33870	2.7	10.1	34480	35600	
	292.4	5.1	20.8	37120	3.4	14.9	39960	2.6	11.4	40680	35700	
	332.2	4.5	19.0	38570	3.0	13.2	40280	2.3	10.1	41010	35700	
	361.9	4.1	15.2	33570	2.8	10.4	34430	2.1	7.9	35050	35600	
	385.6	3.9	16.8	39640	2.6	11.5	40650	1.9	8.8	41500	35700	
	392.0	3.8	16.6	39680	2.6	11.3	40690	1.9	8.7	41610	35700	
	411.2	3.6	13.5	33840	2.4	9.2	34710	1.8	7.0	35330	35600	
	465.9	3.2	14.1	40110	2.1	9.6	41140	1.6	7.5	42710	35700	
	490.7	3.1	13.4	40240	2.0	9.2	41270	1.5	7.2	43040	35700	
	549.7	2.7	12.1	40520	1.8	8.3	41920	1.4	6.5	43790	35700	
	569.5	2.6	11.7	40610	1.8	8.1	42150	1.3	6.3	43870	35700	
	607.4	2.5	9.3	34670	1.6	6.4	35560	1.2	5.0	36890	35600	
	661.0	2.3	10.1	40990	1.5	7.1	43110	1.1	5.4	43870	35700	
	688.2	2.2	9.8	41100	1.5	6.9	43370	1.1	5.2	43870	35700	
	704.9	2.1	8.1	35000	1.4	5.6	36120	1.1	4.4	37730	35600	
	798.7	1.9	8.5	41720	1.3	6.0	43870	0.9	4.5	43870	35700	
	818.1	1.8	7.1	35320	1.2	4.9	36940	0.9	3.9	38590	35600	
	965.0	1.6	6.6	38830	1.0	4.5	39830	0.8	3.4	40550	35700	
	988.5	1.5	5.9	35750	1.0	4.2	38020	0.8	3.3	39710	35600	
	1194.5	1.3	5.0	36790	0.8	3.6	39120	0.6	2.8	40860	35600	
	1374.2	1.1	3.9	32930	0.7	2.8	35010	0.5	2.2	36570	32000	

Rapporti superiori sono possibili. Contattare il ns. Servizio Tecnico Commerciale per eventuali richieste

Higher ratios are available. Contact our Technical Service for possible questions

Höhere Übersetzungen sind möglich, Kontaktieren Sie unseren technischen Vertriebsservice für Ihre Anfragen

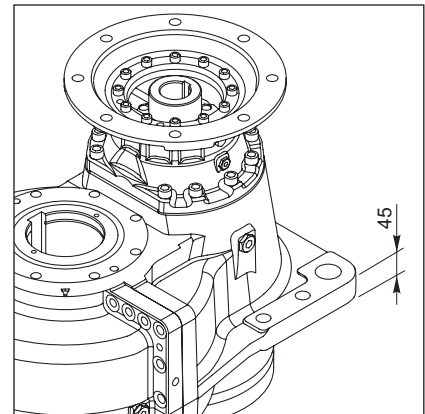
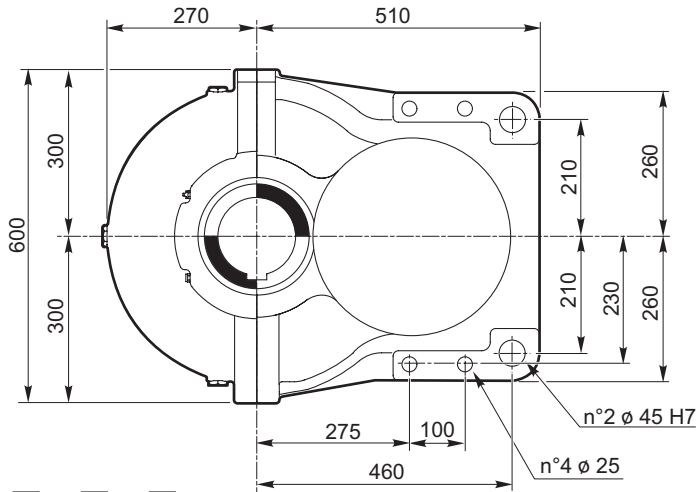
Rapports supérieurs possibles, contacter notre service technico-commercial pour toute information

Una relación superior es posible. Solicitar información a nuestro Servicio Técnico Comercial

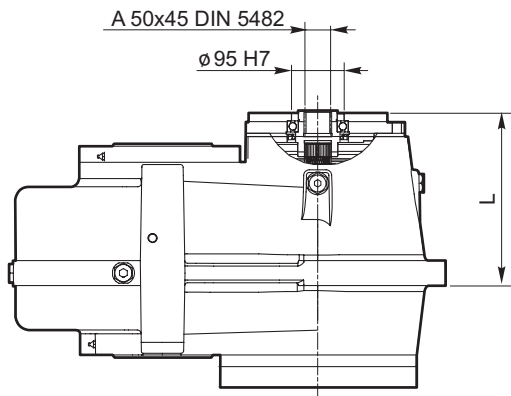
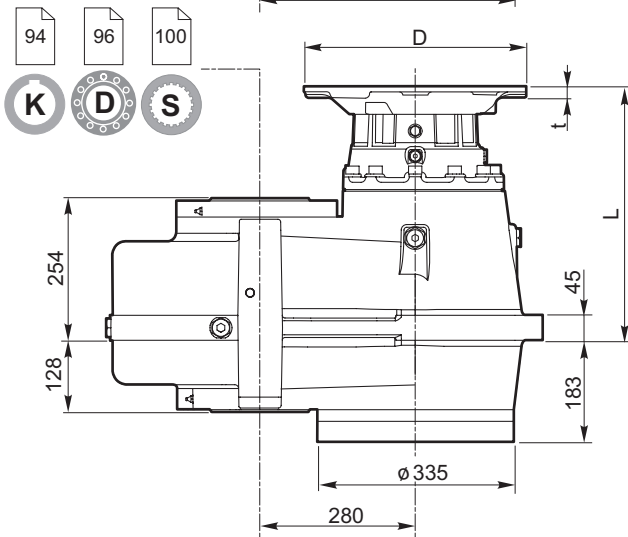
Relações superiores podem ser disponíveis. Entre em contato com o nosso Serviço Técnico Comercial para obter informações



Planetary helical gearboxes / Planeten-Stirradgetriebe / Réducteurs à arbres cylindriques / Reductores con ejes paralelos / Redutores de eixos paralelos

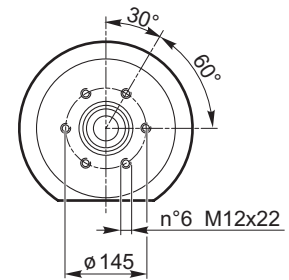


X
110



Ingresso 00

Input 00
Eingang 00
Entrée 00
Entrada 00
Entrada 00



Predisposizioni IEC / IEC Adaptor / IEC-Motorlaterne Prédisposition IEC / Predisposición para el motor IEC / Adaptador IEC

	INPUT 00	80 - 90	100 - 112	132	160	180	200	225	250**	280**	
	—	200	250	300	350	350	400	450	550	550	D
	—	*	15	16	20	20	20	22	25	25	t
PH 228	310.5	—	—	—	—	—	457	487	429.5	429.5	L
PH 328	351.5	—	—	446.5	457	457	457	487	487	—	
PH 428	419.5	446.5	447.5	514.5	545.5	545.5	555.5	—	—	—	
PH 528	472	499	500	567.0	—	—	—	—	—	—	

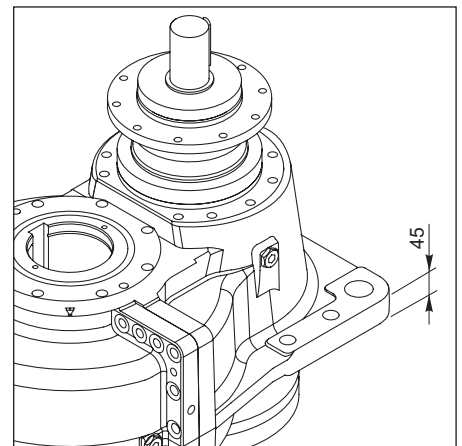
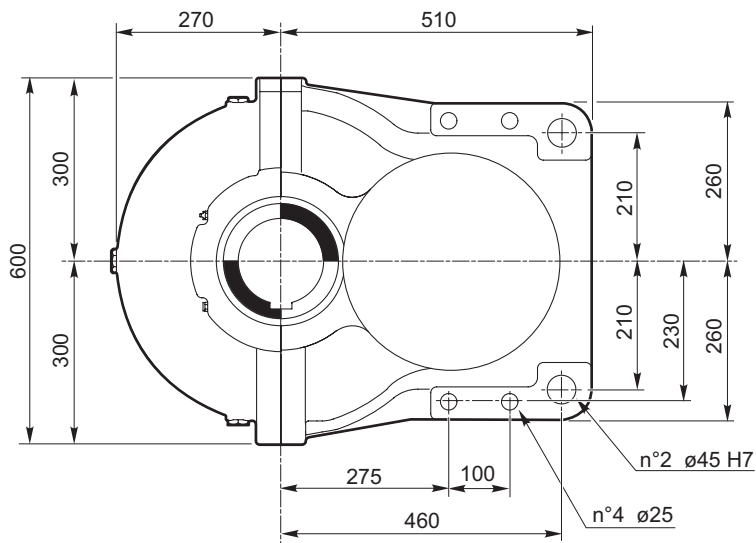
* Fori filettati nella flangia motore / Threaded holes on motor flange / Gewindebohrungen Motorlaterne
Trous filetés sur la lanterne moteur / Orificios roscados en la brida del motor / Furos rosqueados no flange do motor

** Richiedere verifica all'ufficio tecnico / Ask the technical office to check / Überprüfung beim technischen Büro anfordern
Demander un contrôle au bureau technique / Solicitar el control del departamento técnico / Solicitar verificação ao escritório técnico

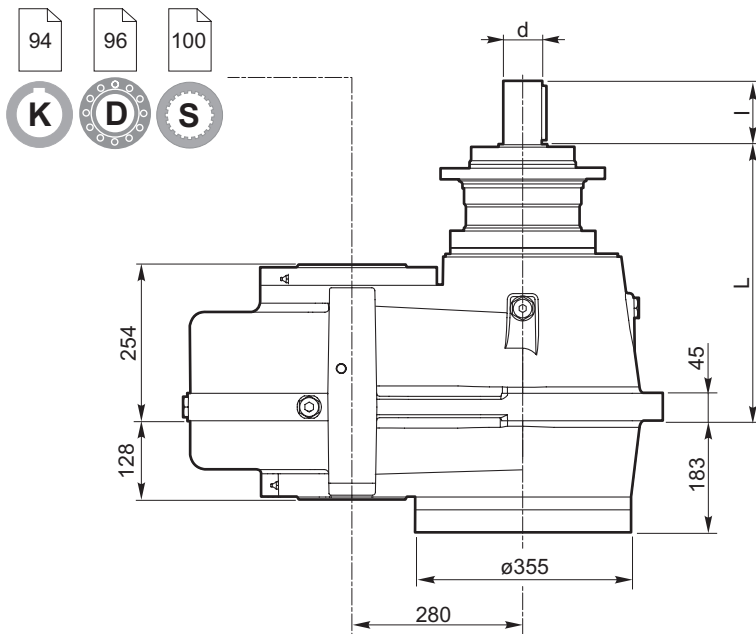


Riduttori ad assi paralleli

Planetary helical gearboxes / Planeten-Stirradgetriebe / Réducteurs à arbres cylindriques / Reductores con ejes paralelos / Redutores de eixos paralelos



X
110

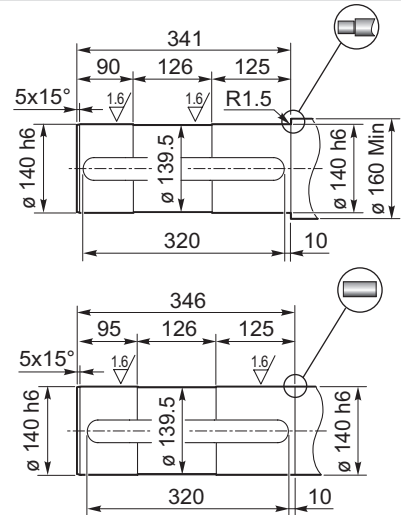
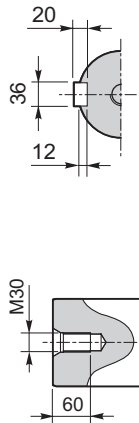
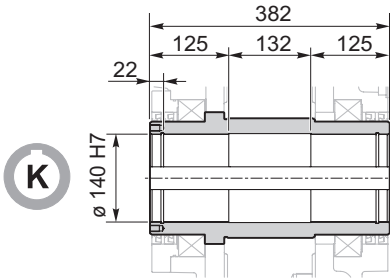


		L	l	d
PH 228	S65	507	130	80 m6
PH 328	S46	405.5	105	65 m6
PH 428	S45	482	105	65 m6
PH 528	M	508	60	35 j6

Planetary helical gearboxes / Planeten-Stirradgetriebe / Réducteurs à arbres cylindriques / Reductores con ejes paralelos / Redutores de eixos paralelos

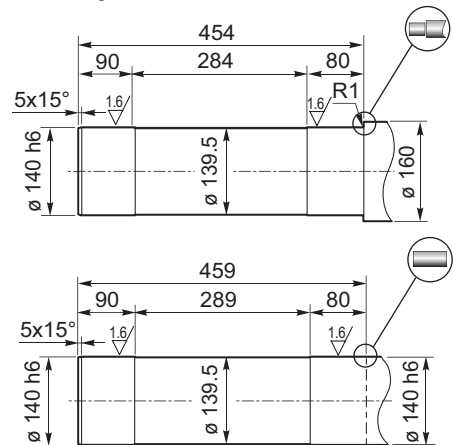
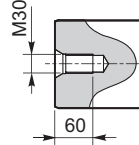
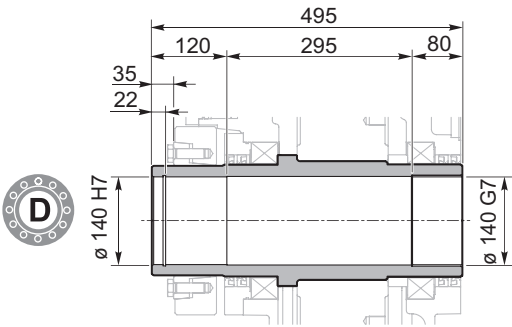
94

Albero cavo con cava per linguetta / Hollow shaft with keyway
Hohlwelle mit Passfedernut / Arbre creux avec rainure de clavette
Eje hueco con chavetero / Eixo oco com rasgo para chaveta



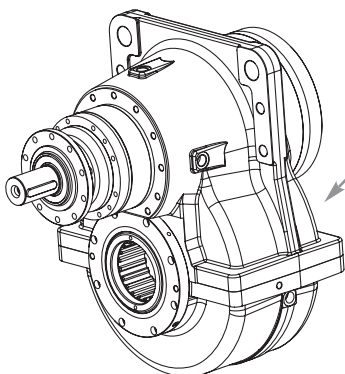
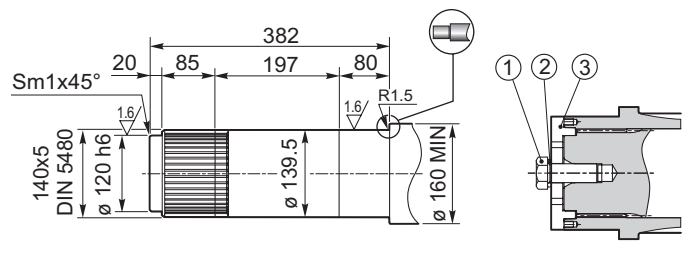
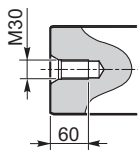
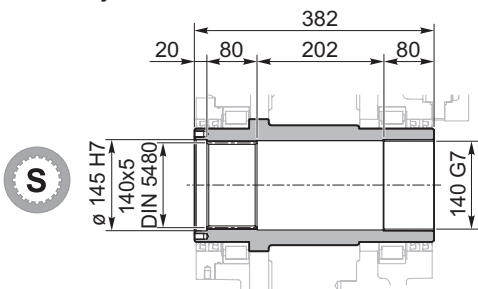
96

Albero uscita cavo con calettatore / Hollow shaft for shrink disc
Hohlwelle mit Schrumpfscheibe / Arbre sortie creux avec frette de serrage
Eje de salida hueco con disco de contracción / Eixo de saída oco com disco de contração



100

Albero uscita cavo scanalato / Splined hollow shaft
Hohlwelle mit Vielkeilprofil / Arbre sortie creux rainuré
Eje de salida hueco acanalado / Eixo de saída oco estriado



Lato macchina
 Machine side
 Maschinenseitig
 Côté machine
 Lado máquina
 Lado da máquina

1) **Vite M30x80 UNI 5737 / Screw M30x80 UNI 5737**
 Schraube M30x80 UNI 5737 / Vis M30x80 UNI 5737
 Tornillo M30x80 UNI 5737 / Parafuso M30x80 UNI5737

2) **Rondella M30 UNI 1751 / Washer M30 UNI 1751**
 Unterlegscheibe M30 UNI 1751 / Rondelle M30 UNI 1751
 Arandela M30 UNI 1751 / Arruela M30 UNI 1751

3) **Fondello F030140 / End plate F030140**
 Endplatte F030140 / Fond F030140
 Fondo F030140 / Placa de retenção F030140

