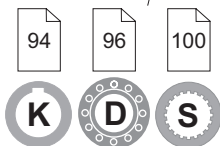
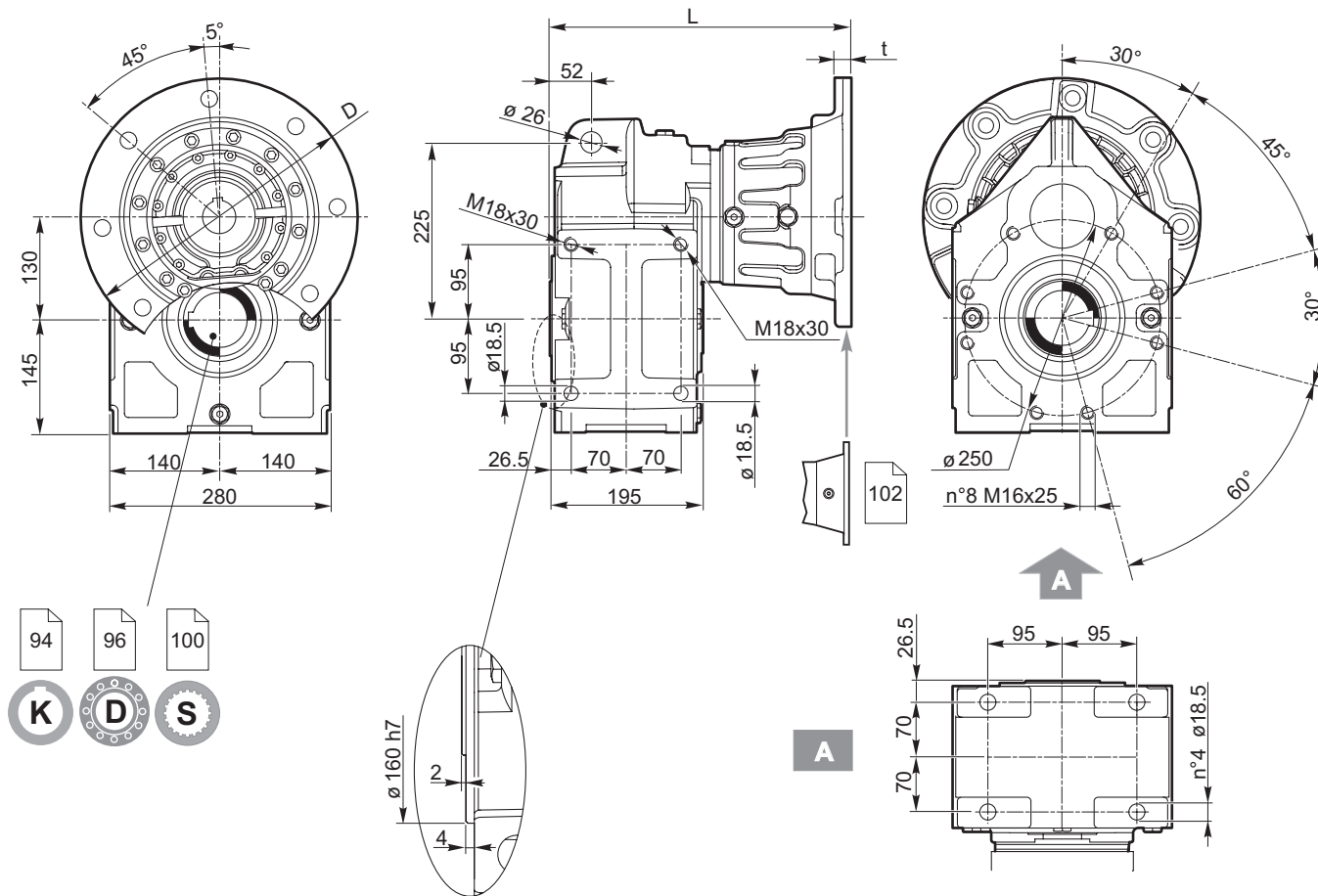


Riduttori ad assi paralleli

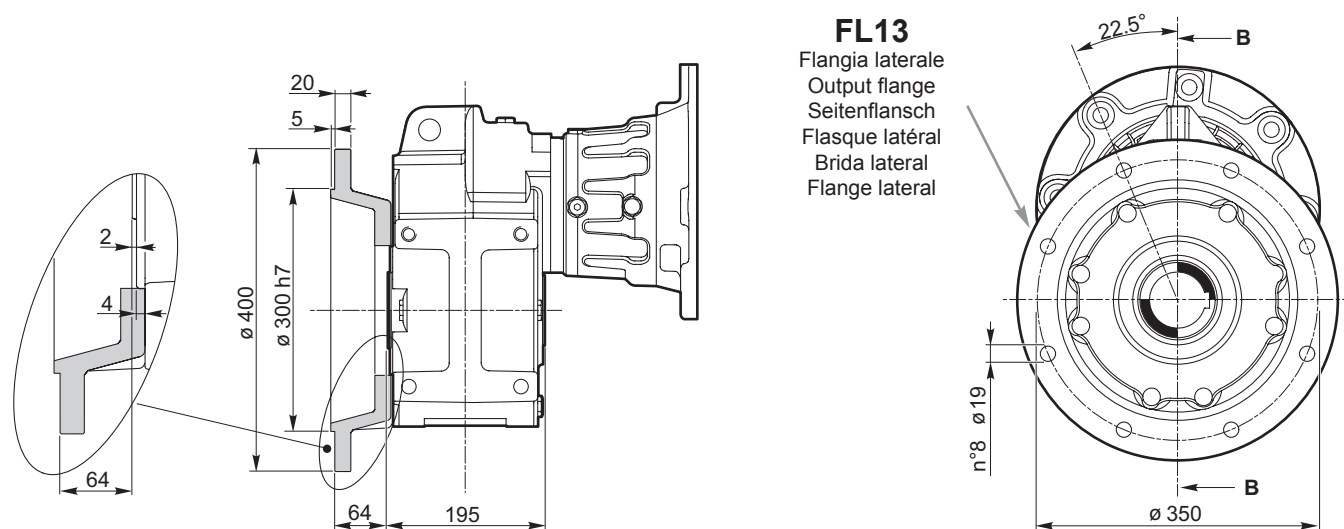
Planetary helical gearboxes / Planeten-Stirradgetriebe / Réducteurs à arbres cylindriques / Reductores con ejes paralelos / Redutores de eixos paralelos

	$n_1 = 1500 \text{ min}^{-1}$			$n_1 = 1000 \text{ min}^{-1}$			$n_1 = 750 \text{ min}^{-1}$			T_{2ISO} [Nm]	P_T [kW]	
	i_{eff}	n_2 [min^{-1}]	P_{N1} [kW]	T_{N2} [Nm]	n_2 [min^{-1}]	P_{N1} [kW]	T_{N2} [Nm]	n_2 [min^{-1}]	P_{N1} [kW]			T_{N2} [Nm]
PH 213	13.92	108	29.1	2500	72	21.7	2800	54	17.7	3050	3850	29
	15.82	95	28.1	2750	63	21.1	3100	47	17.3	3400	3900	
	16.43	91	29.0	2950	61	21.6	3300	46	16.4	3350	3530	
	18.68	80	28.0	3250	54	19.3	3350	40	14.7	3400	3530	
	19.77	76	23.3	2850	51	16.0	2950	38	12.2	3000	3130	
	21.29	70	25.0	3300	47	16.9	3350	35	13.0	3450	3530	
	22.95	65	23.2	3300	44	15.9	3400	33	12.1	3450	3530	
	25.62	59	18.3	2900	39	12.6	3000	29	9.6	3050	3130	
	27.63	54	16.9	2900	36	11.7	3000	27	8.9	3050	3130	
	30.87	49	12.8	2450	32	8.6	2450	24	6.6	2500	3010	
	33.20	45	14.3	2950	30	9.9	3050	23	7.5	3100	3130	
	35.24	43	9.7	2100	28	6.5	2100	21	5.0	2150	2570	
	37.16	40	12.8	2950	27	8.5	2950	20	6.5	3000	3130	
	42.41	35	9.5	2500	24	6.4	2500	18	4.9	2550	3100	
PH 313	50.79	29.5	12.7	3890	19.7	8.7	4030	14.8	6.8	4160	3900	22
	57.75	26.0	11.2	3920	17.3	7.8	4110	13.0	6.1	4290	3900	
	59.95	25.0	9.7	3520	16.7	6.7	3650	12.5	5.3	3810	3530	
	65.66	22.8	10.0	3960	15.2	7.0	4190	11.4	5.5	4380	3900	
	70.97	21.1	9.3	3990	14.1	6.5	4170	10.6	4.9	4240	3900	
	74.84	20.0	8.9	4020	13.4	6.3	4270	10.0	4.9	4460	3900	
	80.69	18.6	8.3	4070	12.4	5.9	4320	9.3	4.6	4520	3900	
	83.77	17.9	7.1	3610	11.9	5.1	3840	9.0	4.0	4010	3530	
	85.30	17.6	7.9	4100	11.7	5.4	4220	8.8	4.1	4290	3900	
	88.33	17.0	6.8	3640	11.3	4.8	3870	8.5	3.8	4040	3530	
	91.97	16.3	7.2	4000	10.9	4.9	4110	8.2	3.7	4180	3900	
	95.46	15.7	7.2	4140	10.5	4.9	4250	7.9	3.7	4320	3900	
	96.99	15.5	7.1	4180	10.3	5.0	4440	7.7	3.9	4640	3900	
	100.7	14.9	6.1	3710	9.9	4.3	3950	7.4	3.4	4120	3530	
	108.5	13.8	6.5	4250	9.2	4.6	4520	6.9	3.6	4720	3900	
	110.5	13.6	6.0	4050	9.0	4.1	4150	6.8	3.2	4230	3900	
	114.5	13.1	5.5	3780	8.7	3.9	4020	6.6	3.0	4200	3530	
	117.0	12.8	5.4	3800	8.5	3.8	4040	6.4	3.0	4220	3530	
	123.9	12.1	5.8	4340	8.1	4.1	4610	6.1	3.1	4720	3900	
	128.1	11.7	5.0	3850	7.8	3.5	4090	5.9	2.7	4270	3530	
	130.5	11.5	4.9	3860	7.7	3.5	4100	5.7	2.7	4290	3530	
	141.2	10.6	4.8	4110	7.1	3.3	4220	5.3	2.5	4290	3900	
	146.2	10.3	4.4	3930	6.8	3.1	4180	5.1	2.5	4360	3530	
	152.2	9.9	4.2	3870	6.6	2.9	3970	4.9	2.2	4040	3900	
	157.4	9.5	4.2	3970	6.4	2.9	4220	4.8	2.3	4410	3530	
	166.7	9.0	4.0	4010	6.0	2.8	4260	4.5	2.2	4450	3530	
	179.7	8.3	3.7	4050	5.6	2.6	4310	4.2	2.1	4490	3530	
	189.5	7.9	3.1	3520	5.3	2.2	3740	4.0	1.7	3910	3130	
200.6	7.5	2.9	3550	5.0	2.1	3770	3.7	1.6	3940	3130		
216.3	6.9	2.8	3590	4.6	1.9	3810	3.5	1.5	3980	3130		
PH413	Rapporti da 185 a 1700, coppia d'uscita nominale 3800Nm / 4500Nm a 1500rpm. Contattare il nostro servizio tecnico commerciale per eventuali richieste Ratios from 185 to 1700, rated torque 3800Nm / 4500Nm at 1500 rpm. For requests contact our technical service Übersetzungsverhältnisse von 185 bis 1700, Ausgangsnehdrehmoment 3800 Nm / 4500 Nm bei 1500 U/min. Für eventuelle Anfragen setzen Sie sich bitte mit unserer technisch-kommerziellen Abteilung in Verbindung Rapports de 185 à 1700, couple de sortie nominal 3800 Nm / 4500 Nm à 1500 tr/min. Pour toute demande, contacter notre service technico-commercial Relaciones de 185 a 1700, par de salida nominal 3800 Nm / 4500 Nm a 1500 rpm. Contactar con el Servicio Técnico Comercial para obtener más detalles Relações de 185 a 1700, torque de saída nominal de 3800 Nm / 4500 Nm a 1500 rpm. Consulte o nosso serviço técnico comercial para eventuais solicitações										18	



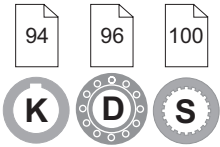
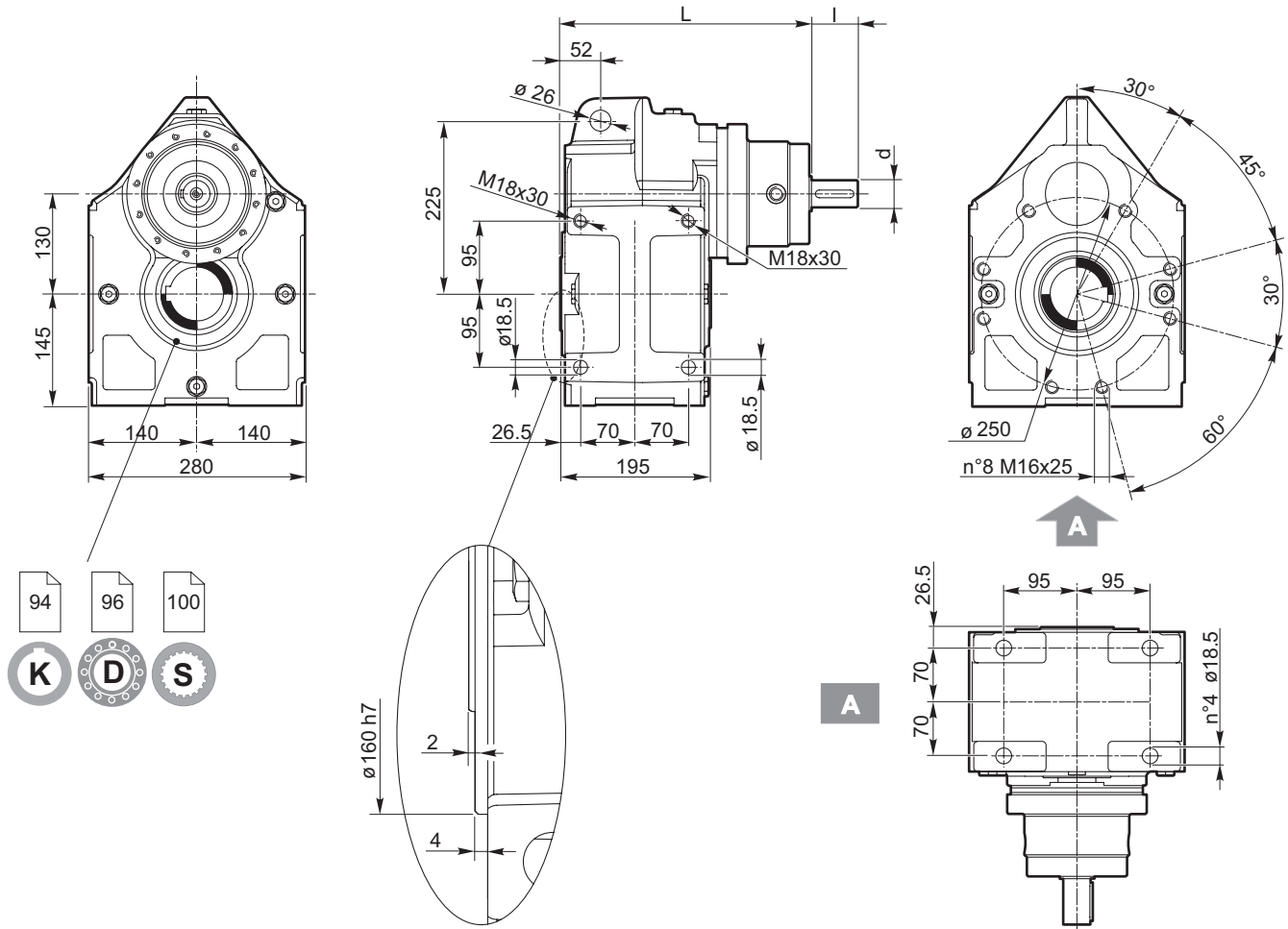
	Predisposizioni IEC / IEC Adaptor / IEC-Motorlaterne						D	
	INPUT 00	71	80 - 90	100 - 112	132	160		180
	—	160	200	250	300	350	350	t
	—	*	*	15	16	20	20	L
PH 213	306	—	—	334	350	382.5	382.5	
PH 313	366	—	393	394	410	442.5	442.5	
PH 413	426	448	453	454	470	—	—	

* Fori filettati nella flangia motore / Threaded holes on motor flange / Gewindebohrungen Motorlaterne / Trous filetés sur la lanterne moteur / Trous filetés sur la lanterne moteur / Furos rosqueados no flange do motor

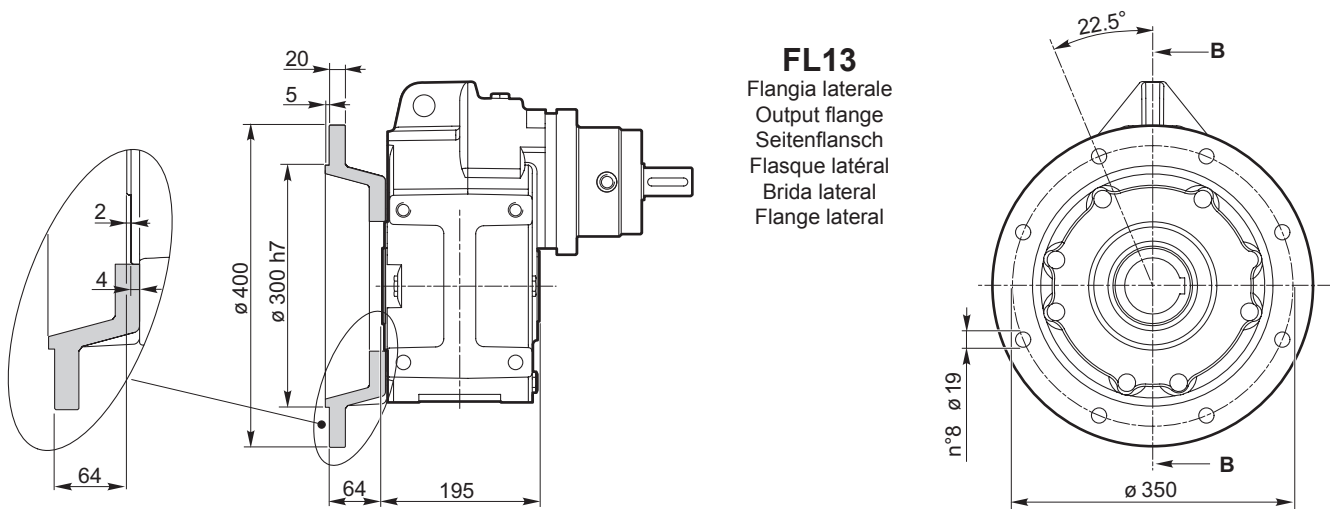


Riduttori ad assi paralleli

Planetary helical gearboxes / Planeten-Stirradgetriebe / Réducteurs à arbres cylindriques / Reductores con ejes paralelos / Redutores de eixos paralelos



	L	l	d
PH 213	326	60	35 j6
PH 313	386	60	35 j6
PH 413	446	60	35 j6

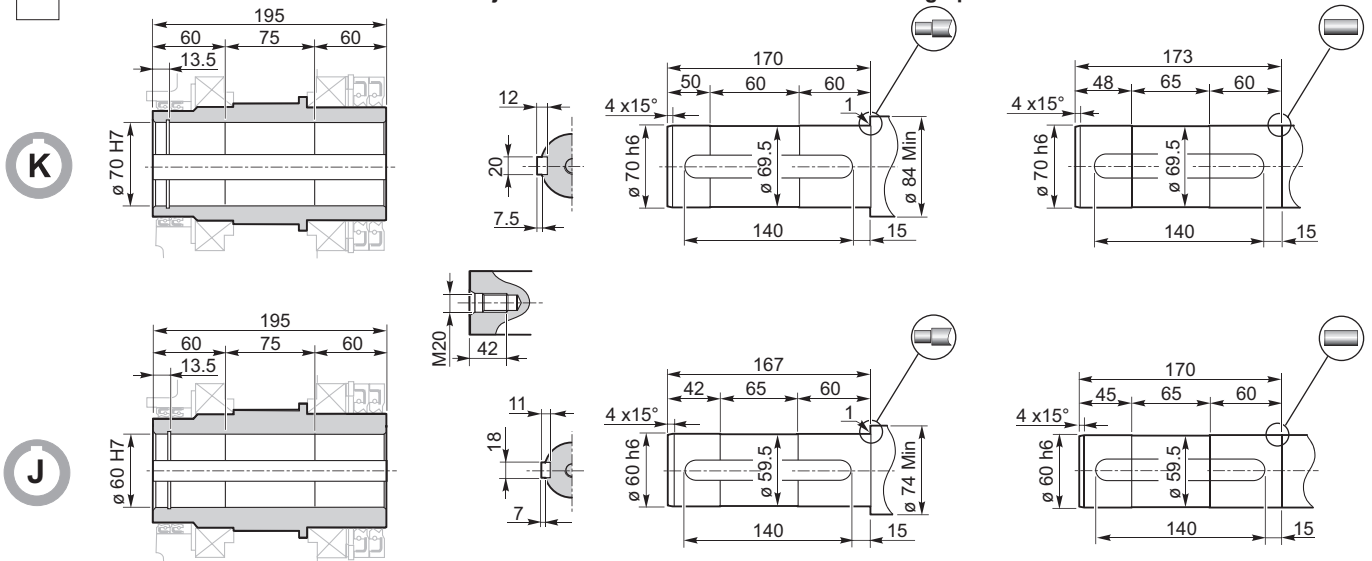


FL13
 Flangia laterale
 Output flange
 Seitenflansch
 Flange lateral

Planetary helical gearboxes / Planeten-Stirradgetriebe / Réducteurs à arbres cylindriques / Reductores con ejes paralelos / Redutores de eixos paralelos

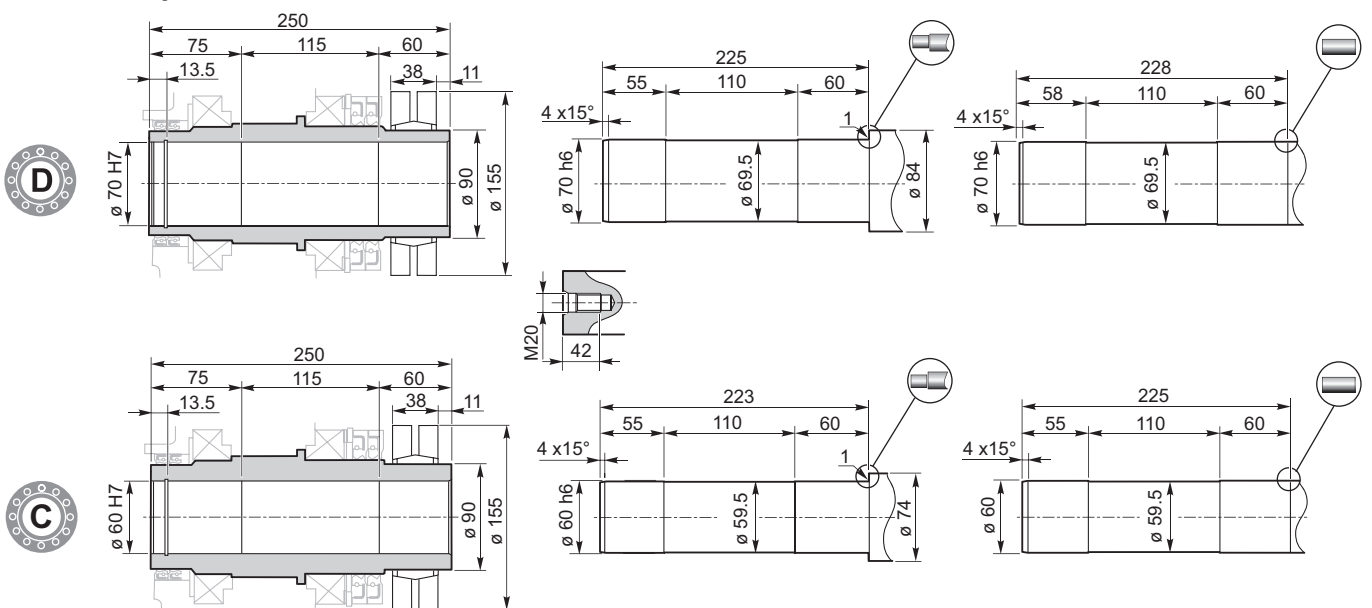
94

Albero cavo con cava per linguetta / Hollow shaft with keyway / Hohlwelle mit Passfedernut
Arbre creux avec rainure de clavette / Eje hueco con chavetero / Eixo oco com rasgo para chaveta



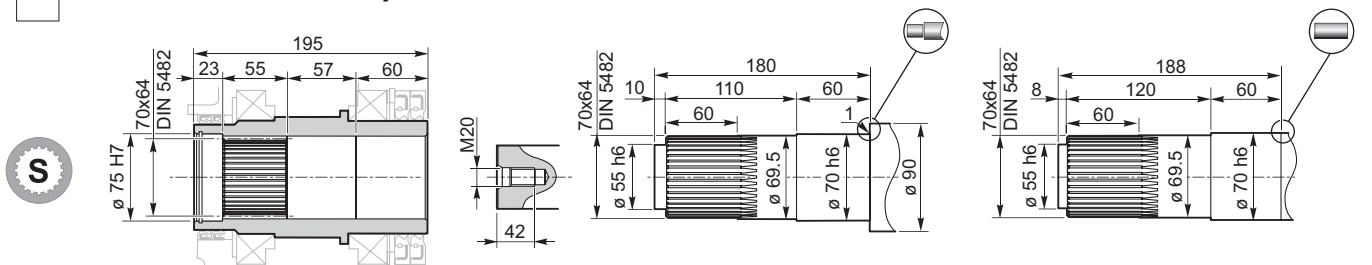
96

Albero uscita cavo con calettatore / Hollow shaft for shrink disc / Hohlwelle mit Schrumpfscheibe
Arbre sortie creux avec frette de serrage / Eje de salida hueco con disco de contracción / Eixo de saída oco com disco de contração



100

Albero uscita cavo scanalato / Splined hollow shaft / Hohlwelle mit Vielkeilprofil
Arbre sortie creux rainuré / Eje de salida hueco acanalado / Eixo de saída oco estriado



Albero maschio in uscita / Output male shaft / Abtriebswellenstumpf
Arbre mâle en sortie / Eje macho de salida / Eixo macho na saída

