

## Riduttori ad assi paralleli

Planetary helical gearboxes / Planeten-Stirradgetriebe / Réducteurs à arbres cylindriques / Reductores con ejes paralelos / Redutores de eixos paralelos

	$n_1 = 1500 \text{ min}^{-1}$			$n_1 = 1000 \text{ min}^{-1}$			$n_1 = 750 \text{ min}^{-1}$			$T_{2ISO}$ [Nm]	$P_T$ [kW]	
	$i_{eff}$	$n_2$ [ $\text{min}^{-1}$ ]	$P_{N1}$ [kW]	$T_{N2}$ [Nm]	$n_2$ [ $\text{min}^{-1}$ ]	$P_{N1}$ [kW]	$T_{N2}$ [Nm]	$n_2$ [ $\text{min}^{-1}$ ]	$P_{N1}$ [kW]			$T_{N2}$ [Nm]
<b>PH 220</b>	11.74	128	57.3	4150	85	43.2	4700	64	35.1	5100	8100	45
	13.86	108	57.2	4900	72	43.1	5550	54	35.2	6050	9500	
	15.75	95	54.9	5350	63	41.3	6050	48	33.8	6600	9300	
	18.59	81	48.2	5550	54	36.2	6250	40	29.5	6800	8500	
	23.27	64	39.9	5750	43	27.1	5850	32	20.6	5950	7200	
	27.00	56	32.0	5350	37	21.7	5450	28	16.6	5550	6700	
	32.63	46	23.1	4650	31	15.5	4700	23	11.9	4800	5800	
<b>PH 320</b>	39.69	38	24.1	5900	25	18.1	6650	19	14.7	7250	10900	34
	46.85	32	24.0	6950	21	18.0	7850	16	14.7	8550	10100	
	53.24	28	23.9	7900	19	18.0	8900	14	14.7	9700	10100	
	62.82	24	22.2	8650	16	15.9	9300	12	12.1	9450	10100	
	69.14	22	19.4	8300	14	14.6	9400	10.8	11.9	10200	10100	
	78.64	19	15.6	7600	13	10.7	7800	9.5	8.1	7900	9000	
	81.59	18	18.2	9200	12	12.4	9450	9.2	9.5	9600	10100	
	94.50	16	14.3	8350	10.6	9.6	8450	7.9	7.3	8600	10100	
	111.5	13	13.6	9400	9.0	9.3	9650	6.7	7.1	9800	10100	
	129.0	11.6	11.2	8950	7.8	7.5	9050	5.8	5.7	9200	10100	
	139.6	10.7	9.1	7850	7.2	6.2	8050	5.4	4.7	8200	9000	
	161.5	9.3	7.9	7950	6.2	5.4	8150	4.6	4.1	8300	9000	
	<b>PH 420</b>	134.2	11.2	10.4	8470	7.5	7.8	9550	5.6	5.9	9570	
158.3		9.5	10.4	9990	6.3	7.8	11280	4.7	5.9	11300	10100	
179.9		8.3	10.4	11360	5.6	7.3	12000	4.2	5.5	12000	10100	
205.7		7.3	8.6	10810	4.9	6.0	11300	3.6	4.5	11300	10100	
233.7		6.4	8.4	11960	4.3	5.6	12000	3.2	4.2	12000	10100	
267.1		5.6	6.6	10650	3.7	4.4	10650	2.8	3.3	10650	10100	
281.1		5.3	6.6	11300	3.6	4.4	11300	2.7	3.3	11300	10100	
303.5		4.9	6.5	12000	3.3	4.3	12000	2.5	3.2	12000	10100	
319.4		4.7	6.2	12000	3.1	4.1	12000	2.3	3.1	12000	10100	
369.5		4.1	5.3	12000	2.7	3.6	12000	2.0	2.7	12000	10100	
414.9		3.6	4.7	12000	2.4	3.2	12000	1.8	2.4	12000	10100	
436.0		3.4	3.9	10210	2.3	2.6	10470	1.7	2.0	10660	10100	
479.8		3.1	4.1	12000	2.1	2.7	12000	1.6	2.1	12000	10100	
559.0		2.7	3.5	12000	1.8	2.3	12000	1.3	1.8	12000	10100	
638.9		2.3	2.7	10650	1.6	1.8	10650	1.2	1.4	10650	10100	
726.0		2.1	2.7	12000	1.4	1.8	12000	1.0	1.4	12000	10100	
773.9		1.9	2.2	10580	1.3	1.6	10990	1.0	1.2	11410	10100	
856.7		1.8	2.0	10650	1.2	1.4	11160	0.9	1.1	11650	10100	
895.1		1.7	1.8	9950	1.1	1.3	10210	0.8	1.0	10390	10100	
992		1.5	1.6	9500	1.0	1.1	9750	0.8	0.8	9920	10100	
1148		1.3	1.2	8650	0.9	0.9	8880	0.7	0.6	9040	9400	
1171		1.3	1.5	11000	0.9	1.1	11500	0.6	0.8	11710	10100	
1354		1.1	1.2	10210	0.7	0.8	10470	0.6	0.6	10660	10100	
1695	0.9	0.9	9370	0.6	0.6	9960	0.4	0.5	10400	9000		

Rapporti superiori sono possibili. Contattare il ns. Servizio Tecnico Commerciale per eventuali richieste

Higher ratios are available. Contact our Technical Service for possible questions

Höhere Übersetzungen sind möglich, Kontaktieren Sie unseren technischen Vertriebsservice für Ihre Anfragen

Rapports supérieurs possibles, contacter notre service technico-commercial pour toute information

Una relación superior es posible. Solicitar información a nuestro Servicio Técnico Comercial

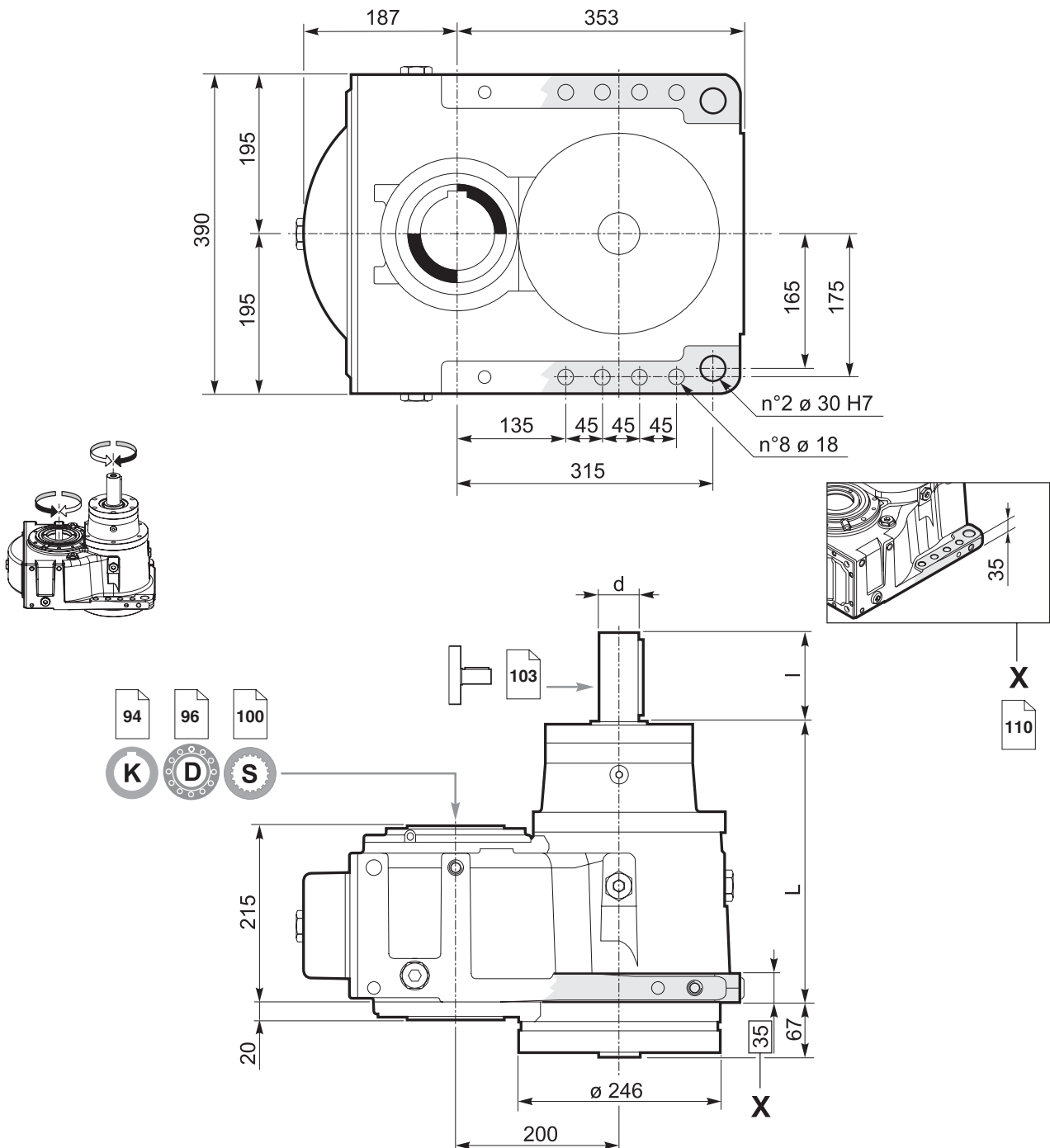
Relações superiores podem ser disponíveis. Entre em contato com o nosso Serviço Técnico Comercial para obter informações





## Riduttori ad assi paralleli

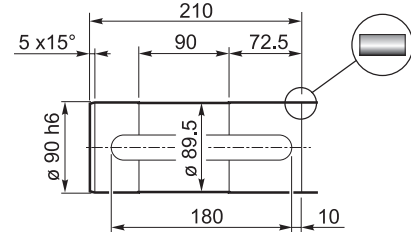
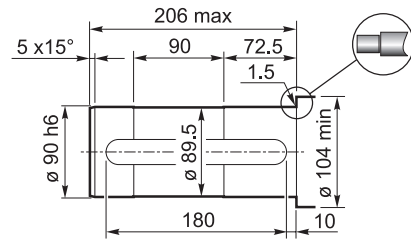
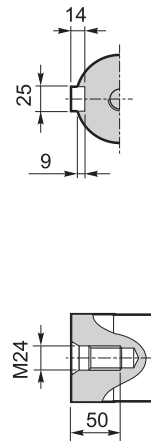
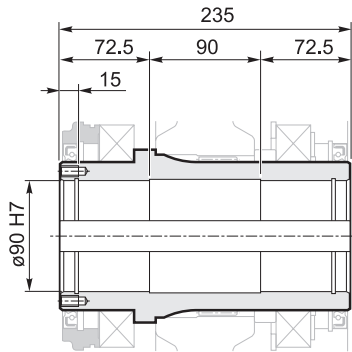
Planetary helical gearboxes / Planeten-Stirradgetriebe / Réducteurs à arbres cylindriques / Reductores con ejes paralelos / Redutores de eixos paralelos



	L	I	d
PH 220	342	105	65 m6
PH 320	313	60	35 j6
PH 420	353	60	35 j6

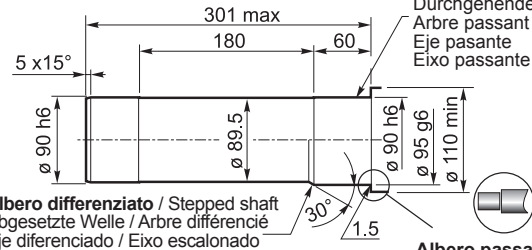
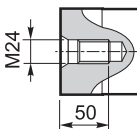
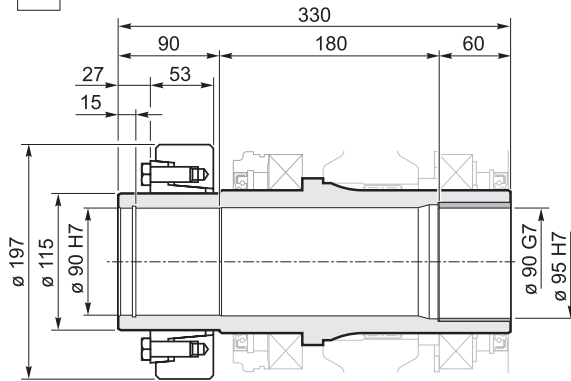
**K** Albero cavo con cava per linguetta / Hollow shaft with keyway  
 Hohlwelle mit Passfedernut / Arbre creux avec rainure de clavette  
 Eje hueco con chavetero / Eixo oco com rasgo para chaveta

94



**D** Albero uscita cavo con calettatore / Hollow shaft for shrink disc  
 Hohlwelle mit Schrumpfscheibe / Arbre sortie creux avec frette de serrage  
 Eje de salida hueco con disco de contracción / Eixo de saída oco com disco de contração

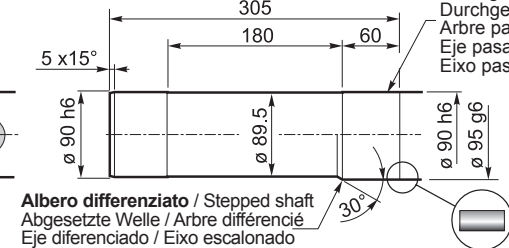
96



**Albero differenziato / Stepped shaft**  
 Abgesetzte Welle / Arbre différencié  
 Eje diferenciado / Eixo escalonado

**Albero passante**  
 Through shaft  
 Durchgehende Welle  
 Arbre passant  
 Eje pasante  
 Eixo passante

**Albero passante**  
 Through shaft  
 Durchgehende Welle  
 Arbre passant  
 Eje pasante  
 Eixo passante

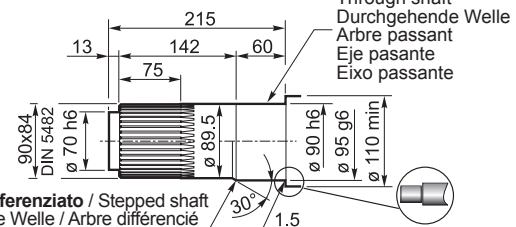
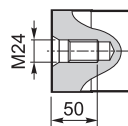
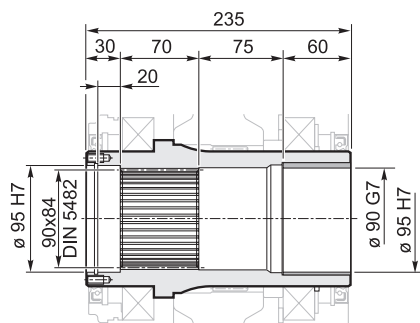


**Albero differenziato / Stepped shaft**  
 Abgesetzte Welle / Arbre différencié  
 Eje diferenciado / Eixo escalonado

**Albero passante**  
 Through shaft  
 Durchgehende Welle  
 Arbre passant  
 Eje pasante  
 Eixo passante

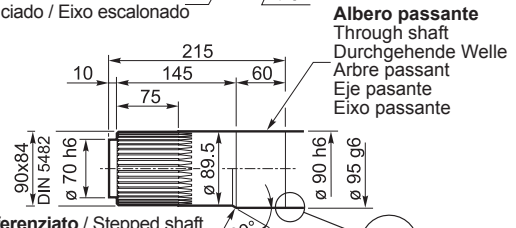
**S** Albero uscita cavo scanalato / Splined hollow shaft  
 Hohlwelle mit Vielkeilprofil / Arbre sortie creux rainuré  
 Eje de salida hueco acanalado / Eixo de saída oco estriado

100



**Albero differenziato / Stepped shaft**  
 Abgesetzte Welle / Arbre différencié  
 Eje diferenciado / Eixo escalonado

**Albero passante**  
 Through shaft  
 Durchgehende Welle  
 Arbre passant  
 Eje pasante  
 Eixo passante



**Albero differenziato / Stepped shaft**  
 Abgesetzte Welle / Arbre différencié  
 Eje diferenciado / Eixo escalonado

**Albero passante**  
 Through shaft  
 Durchgehende Welle  
 Arbre passant  
 Eje pasante  
 Eixo passante