

Riduttori ad assi paralleli

Planetary helical gearboxes / Planeten-Stirradgetriebe / Réducteurs à arbres cylindriques / Reductores con ejes paralelos / Redutores de eixos paralelos

	$n_1 = 1500 \text{ min}^{-1}$			$n_1 = 1000 \text{ min}^{-1}$			$n_1 = 750 \text{ min}^{-1}$			T_{2ISO} [Nm]	P_T [kW]	
	i_{eff}	n_2 [min^{-1}]	P_{N1} [kW]	T_{N2} [Nm]	n_2 [min^{-1}]	P_{N1} [kW]	T_{N2} [Nm]	n_2 [min^{-1}]	P_{N1} [kW]			T_{N2} [Nm]
PH 216	13.92	108	29.6	2500	72	22.0	2800	54	18.0	3050	3900	29
	16.43	91	29.5	2950	61	21.9	3300	46	17.9	3600	4600	
	18.68	80	28.5	3250	54	21.5	3700	40	17.4	4000	5100	
	19.77	76	27.3	3300	51	20.6	3750	38	16.7	4050	5000	
	22.48	67	25.1	3450	44	18.8	3900	33	15.4	4250	5000	
	25.62	59	22.6	3550	39	17.1	4050	29	13.9	4400	5000	
	27.63	54	21.5	3650	36	16.1	4100	27	12.5	4250	5000	
	33.20	45	16.5	3350	30	11.1	3400	23	8.5	3450	4200	
	37.16	40	13.0	2950	27	8.7	2950	20	6.6	3000	3600	
	42.41	35	9.7	2500	24	6.5	2500	18	5.0	2550	3100	
PH 316	50.79	30	12.8	3980	20	8.8	4080	15	6.7	4160	4600	22
	57.75	26	12.5	4420	17	8.5	4540	13	6.5	4620	5100	
	59.95	25	12.8	4700	17	8.7	4820	13	6.6	4900	5500	
	68.16	22	11.3	4730	15	8.5	5350	11	5.9	4940	5800	
	77.50	19	10.8	5130	13	7.5	5400	9.7	5.8	5500	5800	
	88.33	17	9.8	5310	11	6.7	5440	8.5	5.1	5540	5800	
	95.24	16	9.1	5330	10	6.2	5470	7.9	4.7	5570	5800	
	114.5	13	7.6	5390	8.7	5.2	5530	6.6	4.0	5630	5800	
	128.1	12	6.9	5430	7.8	4.7	5570	5.9	3.6	5670	5800	
	146.2	10	6.1	5480	6.8	4.2	5620	5.1	3.2	5720	5800	
	157.1	9.6	5.7	5480	6.4	4.0	5800	4.8	3.0	5800	5000	
	175.8	8.5	5.2	5580	5.7	3.6	5800	4.3	2.7	5800	5000	
	200.6	7.5	4.6	5690	5.0	3.1	5800	3.7	2.3	5800	5000	
	216.3	6.9	4.1	5490	4.6	2.8	5630	3.5	2.2	5740	5000	
PH 416	218.8	6.9	3.8	5130	4.6	2.6	5270	3.4	2.0	5360	5500	18
	248.8	6.0	3.7	5710	4.0	2.6	5850	3.0	1.9	5960	5800	
	282.9	5.3	3.3	5750	3.5	2.3	5900	2.7	1.7	6000	5800	
	299.5	5.0	3.3	6000	3.3	2.2	6000	2.5	1.6	6000	5000	
	340.5	4.4	2.9	6000	2.9	1.9	6000	2.2	1.4	6000	5000	
	387.1	3.9	2.5	6000	2.6	1.7	6000	1.9	1.3	6000	5000	
	441.3	3.4	2.2	6000	2.3	1.5	6000	1.7	1.1	6000	5000	
	502.9	3.0	1.9	6000	2.0	1.3	6000	1.5	1.0	6000	5000	
	542.3	2.8	1.8	6000	1.8	1.2	6000	1.4	0.9	6000	5000	
	651.8	2.3	1.5	6000	1.5	1.0	6000	1.2	0.7	6000	5000	
	702.8	2.1	1.4	6000	1.4	0.9	6000	1.1	0.7	6000	5000	
	844.7	1.8	1.2	6000	1.2	0.8	6000	0.9	0.6	6000	5000	
	945.3	1.6	1.0	6000	1.1	0.7	6000	0.8	0.5	6000	5000	
	1079	1.4	0.9	6000	0.9	0.6	6000	0.7	0.5	6000	5000	
	1230	1.2	0.8	6000	0.8	0.5	6000	0.6	0.4	6000	5000	
	1376	1.1	0.7	6000	0.7	0.5	6000	0.5	0.4	6000	5000	
	1571	1.0	0.6	6000	0.6	0.4	6000	0.5	0.3	6000	5000	
	1694	0.9	0.6	6000	0.6	0.4	6000	0.4	0.3	6000	5000	

Rapporti superiori sono possibili. Contattare il ns. Servizio Tecnico Commerciale per eventuali richieste

Higher ratios are available. Contact our Technical Service for possible questions

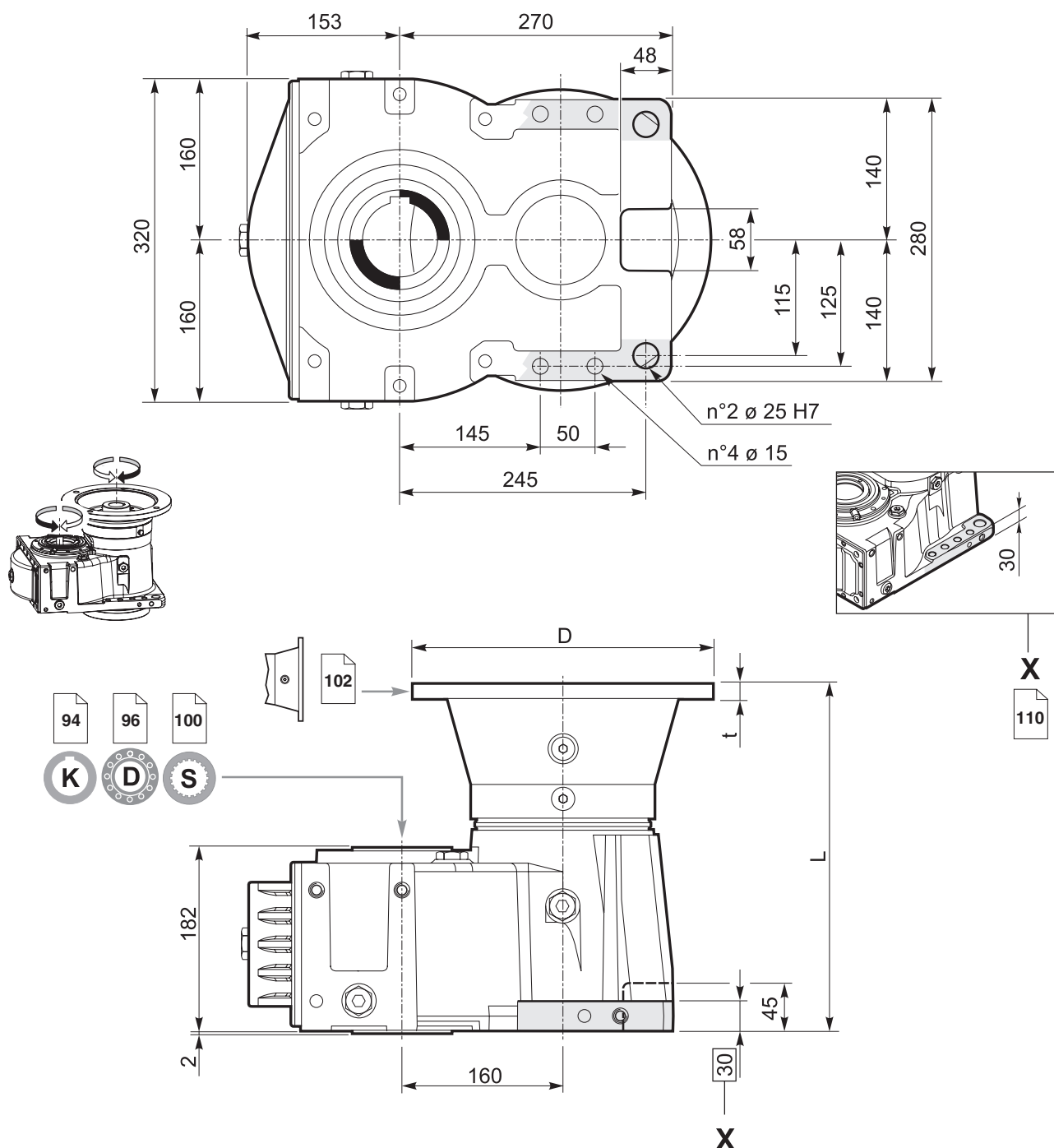
Höhere Übersetzungen sind möglich, Kontaktieren Sie unseren technischen Vertriebsservice für Ihre Anfragen

Rapports supérieurs possibles, contacter notre service technico-commercial pour toute information

Una relación superior es posible. Solicitar información a nuestro Servicio Técnico Comercial

Relações superiores podem ser disponíveis. Entre em contato com o nosso Serviço Técnico Comercial para obter informações





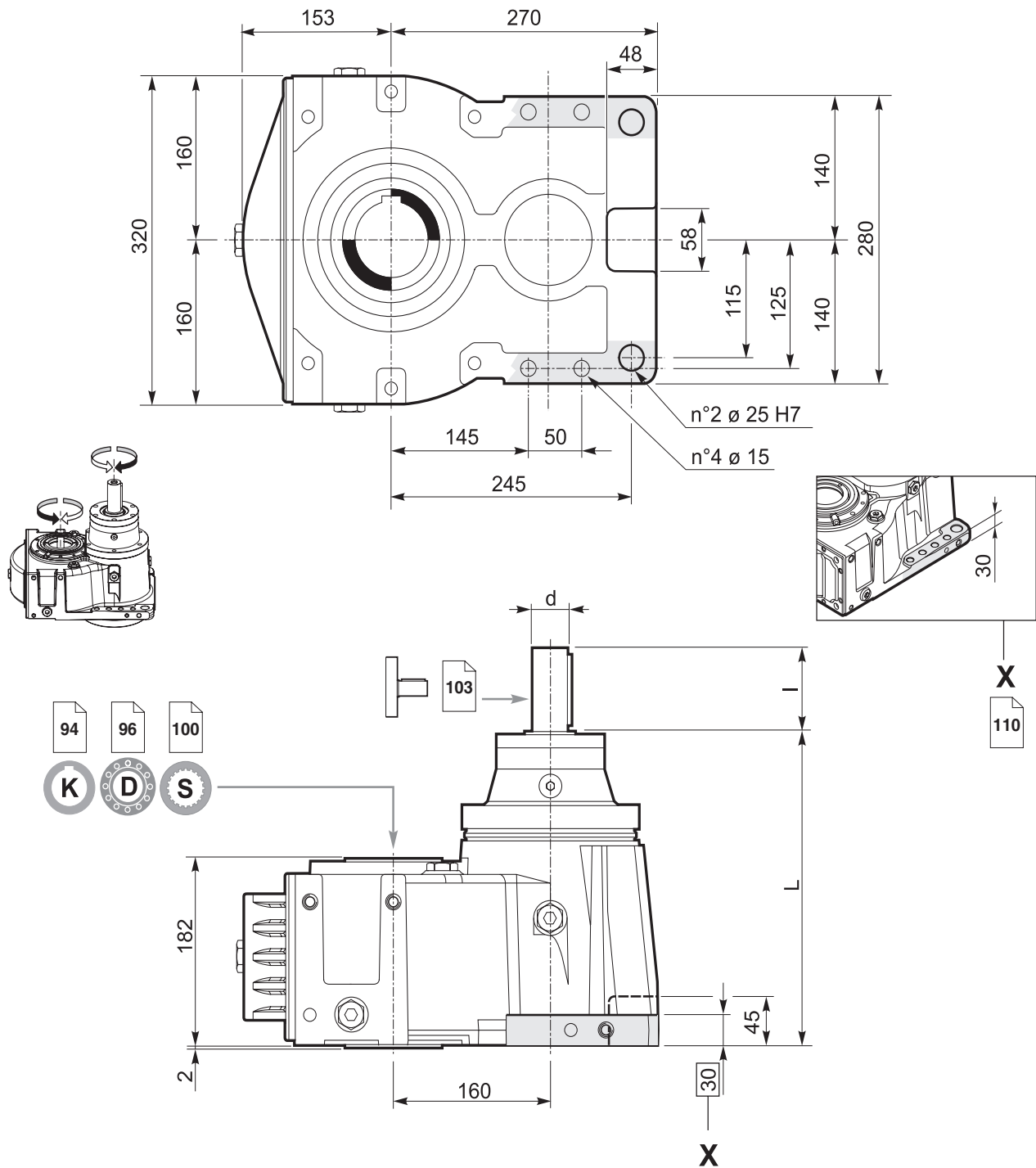
Predisposizioni IEC / IEC Adaptor / IEC-Motorlaterne
Prédisposition IEC / Predisposición para el motor IEC / Adaptor IEC

	INPUT 00	71	80 - 90	100 - 112	132	160	180	
	—	160	200	250	300	350	350	D
	—	*	*	15	16	20	20	t
PH 216	300.5	—	—	—	344.5	377	377	L
PH 316	360.5	—	387.5	388.5	404.5	437	—	
PH 416	420.5	442.5	447.5	448.5	464.5	—	—	

* Fori filettati nella flangia motore / Threaded holes on motor flange / Gewindebohrungen Motorlaterne
Trous filetés sur la lanterne moteur / Orificios roscados en la brida del motor / Furos rosqueados no flange do motor

Riduttori ad assi paralleli

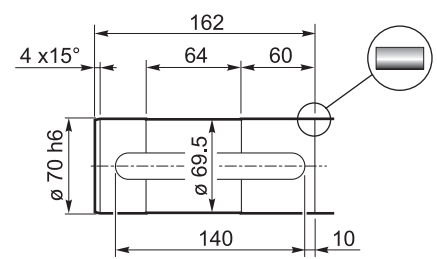
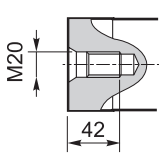
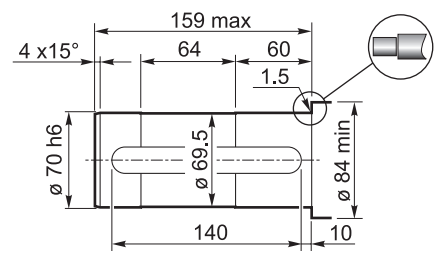
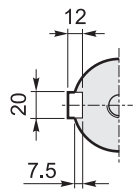
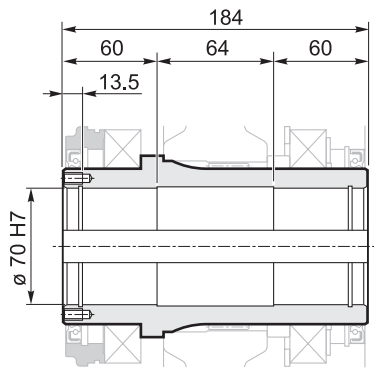
Planetary helical gearboxes / Planeten-Stirradgetriebe / Réducteurs à arbres cylindriques / Reductores con ejes paralelos / Redutores de eixos paralelos



	L	l	d
PH 216	320.5	60	35 j6
PH 316	380.5	60	35 j6
PH 416	440.5	60	35 j6

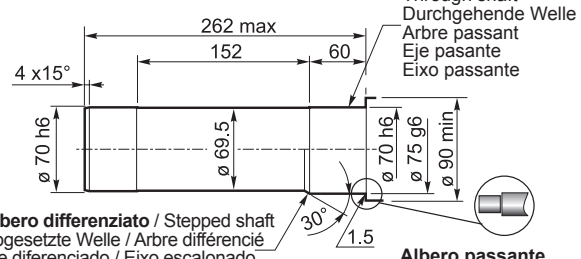
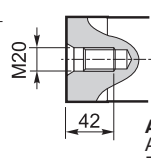
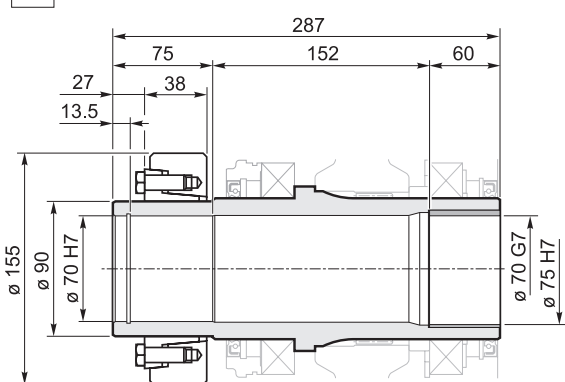
K **Albero cavo con cava per linguetta / Hollow shaft with keyway**
Hohlwelle mit Passfedernut / Arbre creux avec rainure de clavette
Eje hueco con chavetero / Eixo oco com rasgo para chaveta

94



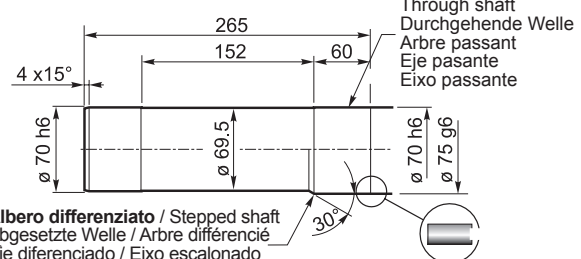
D **Albero uscita cavo con calettatore / Hollow shaft for shrink disc**
Hohlwelle mit Schrumpfscheibe / Arbre sortie creux avec frette de serrage
Eje de salida hueco con disco de contracción / Eixo de saída oco com disco de contração

96



Albero differenziato / Stepped shaft
Abgesetzte Welle / Arbre différencié
Eje diferenciado / Eixo escalonado

Albero passante
Through shaft
Durchgehende Welle
Arbre passant
Eje pasante
Eixo passante

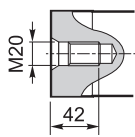
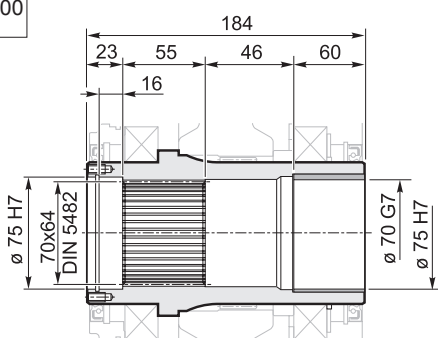


Albero differenziato / Stepped shaft
Abgesetzte Welle / Arbre différencié
Eje diferenciado / Eixo escalonado

Albero passante
Through shaft
Durchgehende Welle
Arbre passant
Eje pasante
Eixo passante

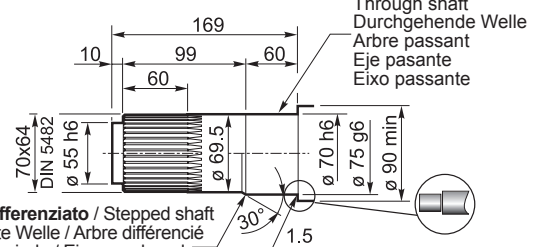
S **Albero uscita cavo scanalato / Splined hollow shaft**
Hohlwelle mit Vielkeilprofil / Arbre sortie creux rainuré
Eje de salida hueco acanalado / Eixo de saída oco estriado

100



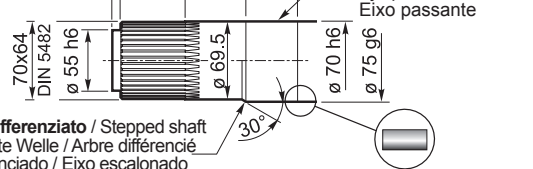
Albero differenziato / Stepped shaft
Abgesetzte Welle / Arbre différencié
Eje diferenciado / Eixo escalonado

Albero passante
Through shaft
Durchgehende Welle
Arbre passant
Eje pasante
Eixo passante



Albero differenziato / Stepped shaft
Abgesetzte Welle / Arbre différencié
Eje diferenciado / Eixo escalonado

Albero passante
Through shaft
Durchgehende Welle
Arbre passant
Eje pasante
Eixo passante



Albero differenziato / Stepped shaft
Abgesetzte Welle / Arbre différencié
Eje diferenciado / Eixo escalonado