



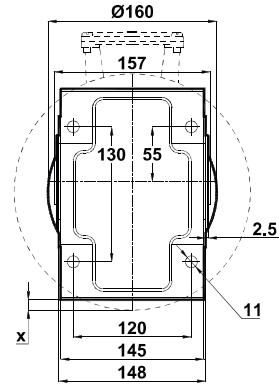
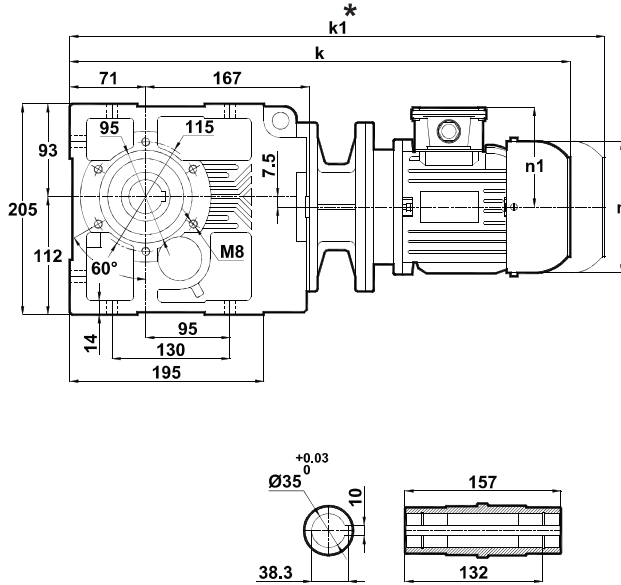
Tabella dimensionali

Dimension Pages

Abmessungsseiten

Foro di centraggio filettato secondo DIN 332 foglio 2 / Tapped center hole to DIN 332, sheet 2 / Zentrierung mit gewinde DIN 332, Blatt 2

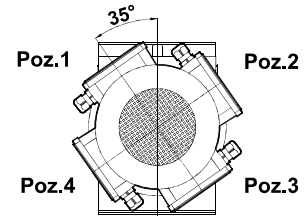
KV273.00



x: Se il motore è più in basso rispetto alla piastra di montaggio del piede
 x: If the Motor is lower than the foot mounting plane
 x: Wenn motor ist niedriger den die Anschlußplatte

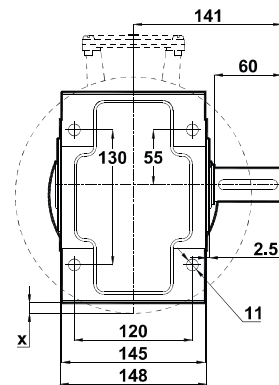
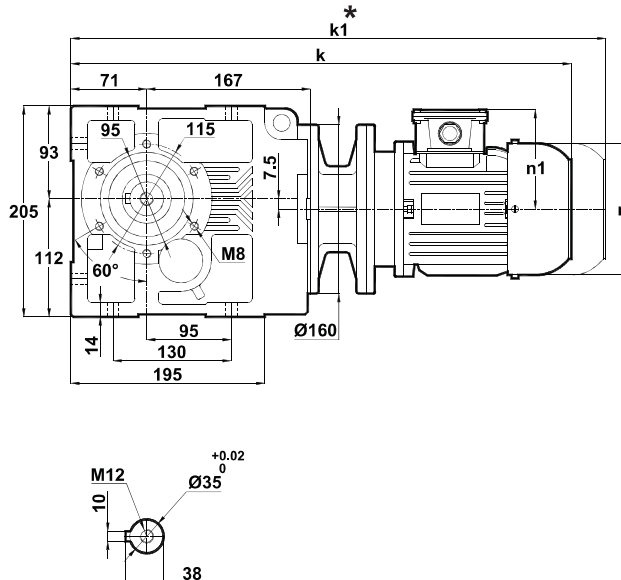
Posizioni morsetteria
 Terminal Box Positions
 Klemmenkasten Positionen

	63/B5	71/B5	80/B5	90S/B5	90L/B5	100L/B5	112M/B5
k	505	502	551	571	596	621	641
k1	-	622	671	696	721	756	776
n	116	138	156	176	176	194	218
n1	97	110	118	126	126	135	146
x	-	-	-	-	-	-	4,5



63-71-80-90-100-112
 Tipo / Type / Typ

KV273.01



x: Se il motore è più in basso rispetto alla piastra di montaggio del piede
 x: If the Motor is lower than the foot mounting plane
 x: Wenn motor ist niedriger den die Anschlußplatte

	63/B5	71/B5	80/B5	90S/B5	90L/B5	100L/B5	112M/B5
k	505	502	551	571	596	621	641
k1	-	622	671	696	721	756	776
n	116	138	156	176	176	194	218
n1	97	110	118	126	126	135	146
x	-	-	-	-	-	-	4,5

La misura "k1" è per motori dotati di freno. I riduttori completi di motori elettrici tipo 63 e 71 non hanno la ventola di raffreddamento, che invece hanno gli altri tipi.
 Dimension "k1" is for motors with brake. Gearboxes with 63 and 71 type electrical motors are not fan cooled, other types are fan cooled.
 Maße "k1" ist für Bremsenmotoren. Getrieben mit 63 und 71 typ Motoren sind ohne Kühlung, andere Typen sind mit Ventilator gekühlt.

La misura "k1" è per motori dotati di freno.
 Dimension "k1" is for motors with brake.
 Maße "k1" ist für Bremsenmotoren.



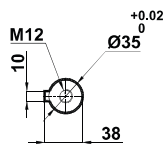
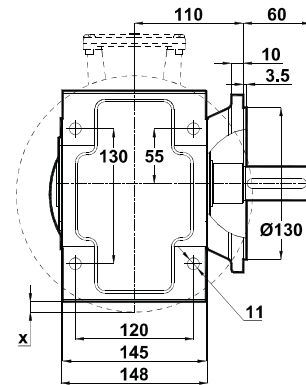
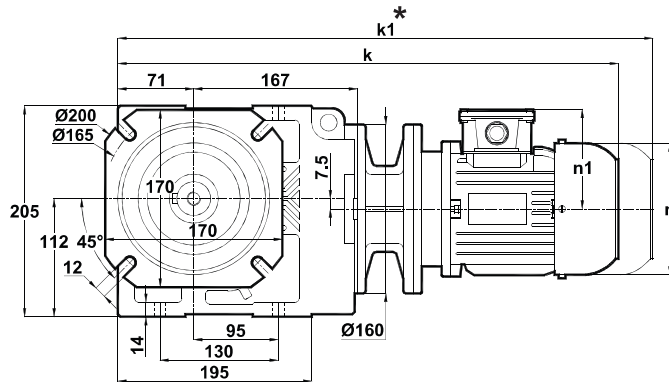
Tabella dimensionali

Dimension Pages

Abmessungsseiten

Foro di centraggio filettato secondo DIN 332 foglio 2 / Tapped center hole to DIN 332, sheet 2 / Zentrierung mit gewinde DIN 332, Blatt 2

KV273.02

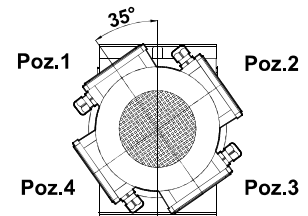


x: Se il motore è più in basso rispetto alla piastra di montaggio del piede

x: If the Motor is lower than the foot mounting plane
x: Wenn motor ist niedriger den die Anschlußplatte

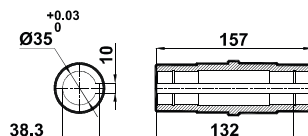
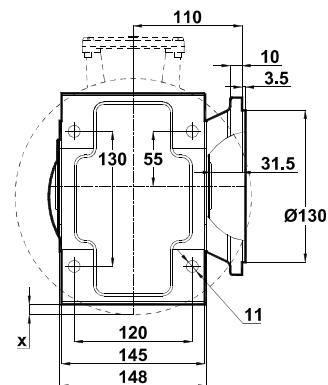
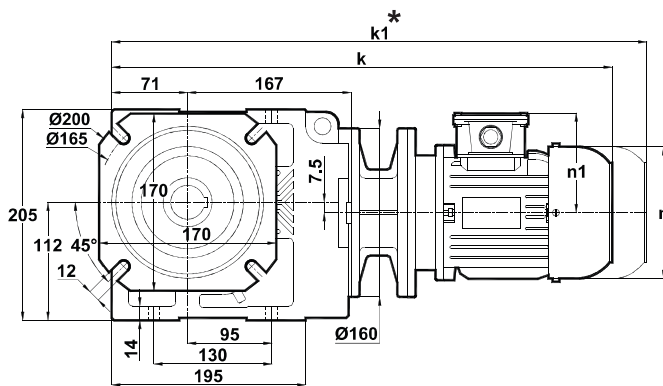
Posizioni morsetteria
Terminal Box Positions
Klemmenkasten Positionen

	63/B5	71/B5	80/B5	90S/B5	90L/B5	100L/B5	112M/B5
k	505	502	551	571	596	621	641
k1	-	622	671	696	721	756	776
n	116	138	156	176	176	194	218
n1	97	110	118	126	126	135	146
x	-	-	-	-	-	-	4,5



63-71-80-90-100-112
Tipo / Type / Typ

KV273.03



x: Se il motore è più in basso rispetto alla piastra di montaggio del piede

x: If the Motor is lower than the foot mounting plane
x: Wenn motor ist niedriger den die Anschlußplatte

	63/B5	71/B5	80/B5	90S/B5	90L/B5	100L/B5	112M/B5
k	505	502	551	571	596	621	641
k1	-	622	671	696	721	756	776
n	116	138	156	176	176	194	218
n1	97	110	118	126	126	135	146
x	-	-	-	-	-	-	4,5

La misura "k1" è per motori dotati di freno.
Dimension "k1" is for motors with brake.
Maße "k1" ist für Bremsenmotoren.



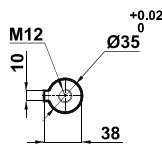
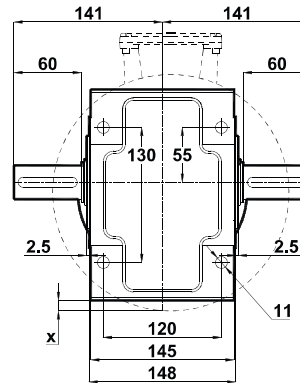
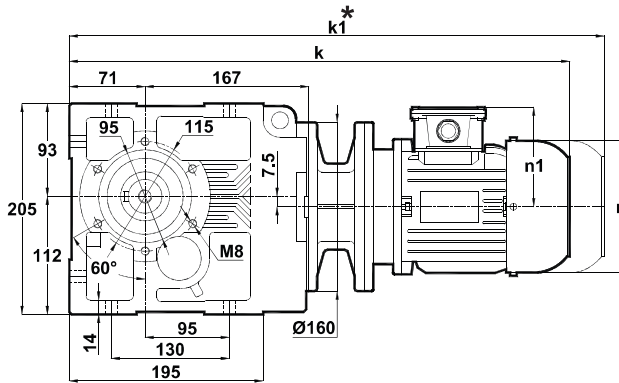
Tabella dimensionali

Dimension Pages

Abmessungsseiten

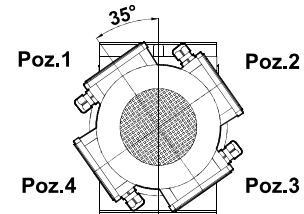
Foro di centraggio filettato secondo DIN 332 foglio 2 / Tapped center hole to DIN 332, sheet 2 / Zentrierung mit gewinde DIN 332, Blatt 2

KV273.04



x: Se il motore è più in basso rispetto alla piastra di montaggio del piede
 x: If the Motor is lower than the foot mounting plane
 x: Wenn motor ist niedriger den die Anschlußplatte

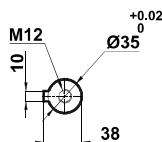
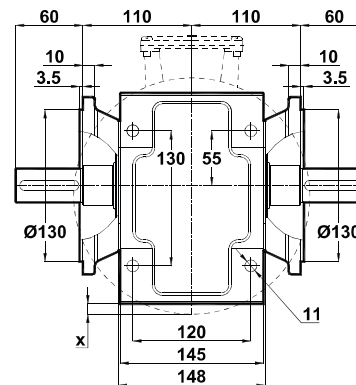
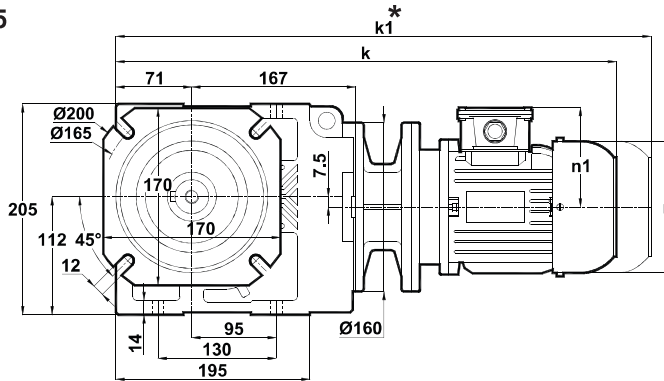
Posizioni morsetteria
 Terminal Box Positions
 Klemmenkasten Positionen



63-71-80-90-100-112
 Tipo / Type / Typ

	63/B5	71/B5	80/B5	90S/B5	90L/B5	100L/B5	112M/B5
k	505	502	551	571	596	621	641
k1	-	622	671	696	721	756	776
n	116	138	156	176	176	194	218
n1	97	110	118	126	126	135	146
x	-	-	-	-	-	-	4,5

KV273.05



x: Se il motore è più in basso rispetto alla piastra di montaggio del piede
 x: If the Motor is lower than the foot mounting plane
 x: Wenn motor ist niedriger den die Anschlußplatte

	63/B5	71/B5	80/B5	90S/B5	90L/B5	100L/B5	112M/B5
k	505	502	551	571	596	621	641
k1	-	622	671	696	721	756	776
n	116	138	156	176	176	194	218
n1	97	110	118	126	126	135	146
x	-	-	-	-	-	-	4,5

La misura "k1" è per motori dotati di freno. I riduttori completi di motori elettrici tipo 63 e 71 non hanno la ventola di raffreddamento, che invece hanno gli altri tipi.
 Dimension "k1" is for motors with brake. Gearboxes with 63 and 71 type electrical motors are not fan cooled, other types are fan cooled.
 Maße "k1" ist für Bremsenmotoren. Getrieben mit 63 und 71 typ Motoren sind ohne Kühlung, andere Typen sind mit Ventilator gekühlt.

La misura "k1" è per motori dotati di freno.
 Dimension "k1" is for motors with brake.
 Maße "k1" ist für Bremsenmotoren.



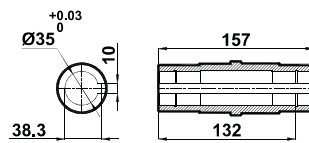
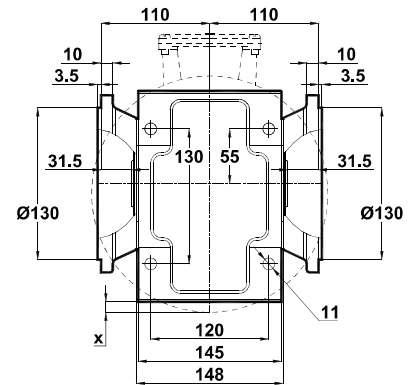
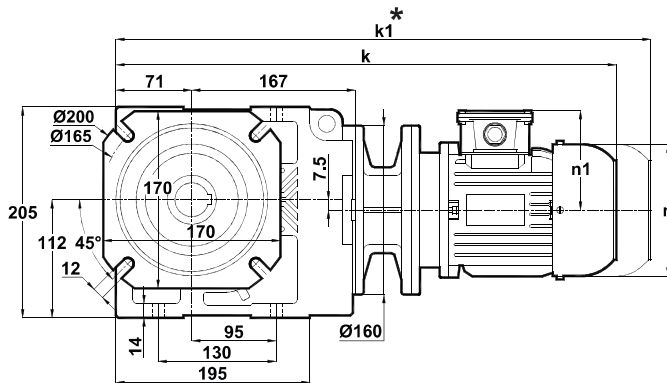
Tabella dimensionali

Dimension Pages

Abmessungsseiten

Foro di centraggio filettato secondo DIN 332 foglio 2 / Tapped center hole to DIN 332, sheet 2 / Zentrierung mit gewinde DIN 332, Blatt 2

KV273.08

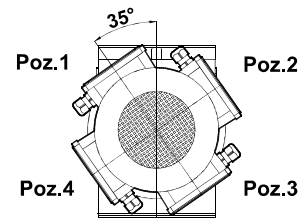


x: Se il motore è più in basso rispetto alla piastra di montaggio del piede

x: If the Motor is lower than the foot mounting plane

x: Wenn motor ist niedriger den die Anschlußplatte

Posizioni morsettiera
Terminal Box Positions
Klemmenkasten Positionen



63-71-80-90-100-112
Tipo / Type / Typ

	63/B5	71/B5	80/B5	90S/B5	90L/B5	100L/B5	112M/B5
k	505	502	551	571	596	621	641
k1	-	622	671	696	721	756	776
n	116	138	156	176	176	194	218
n1	97	110	118	126	126	135	146
x	-	-	-	-	-	-	4,5

La misura "k1" è per motori dotati di freno.
Dimension "k1" is for motors with brake.
Maße "k1" ist für Bremsenmotoren.



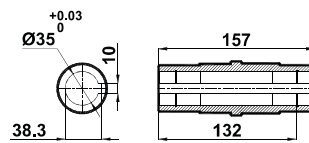
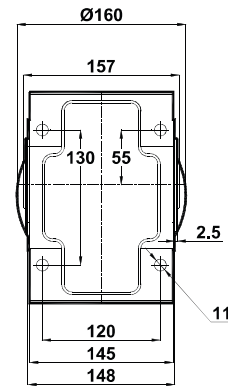
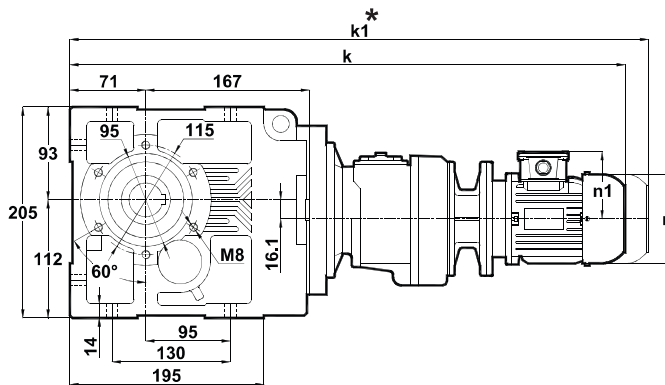
Tabelle dimensionali

Dimension Pages

Abmessungsseiten

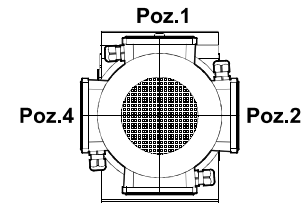
Foro di centraggio filettato secondo DIN 332 foglio 2 / Tapped center hole to DIN 332, sheet 2 / Zentrierung mit gewinde DIN 332, Blatt 2

KV275.00
KV276.00



	63/B5	71/B5	80/B5
k	620	648	683
k1	-	768	803
n	116	138	156
n1	97	110	118

Posizioni morsetteria
Terminal Box Positions
Klemmenkasten Positionen

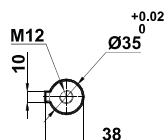
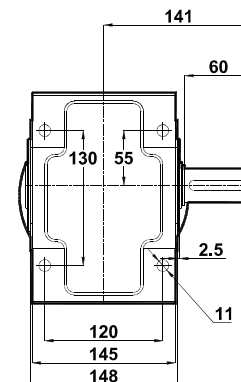
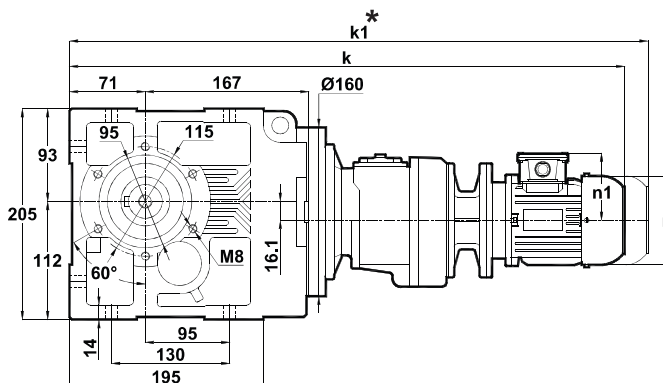


Poz.1

63-71-80

Tipo / Type / Typ

KV275.01
KV276.01



	63/B5	71/B5	80/B5
k	620	648	683
k1	-	768	803
n	116	138	156
n1	97	110	118

La misura "k1" è per motori dotati di freno. I riduttori completi di motori elettrici tipo 63 e 71 non hanno la ventola di raffreddamento, che invece hanno gli altri tipi. Dimension "k1" is for motors with brake. Gearboxes with 63 and 71 type electrical motors are not fan cooled, other types are fan cooled.

Maße "k1" ist für Bremsenmotoren. Getrieben mit 63 und 71 typ Motoren sind ohne Kühlung, andere Typen sind mit Ventilator gekühlt.

La misura "k1" è per motori dotati di freno. Dimension "k1" is for motors with brake. Maße "k1" ist für Bremsenmotoren.



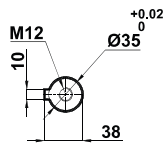
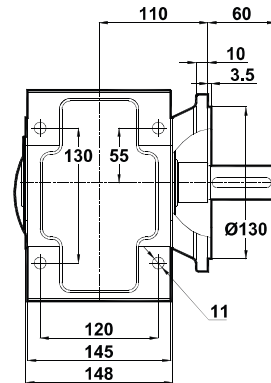
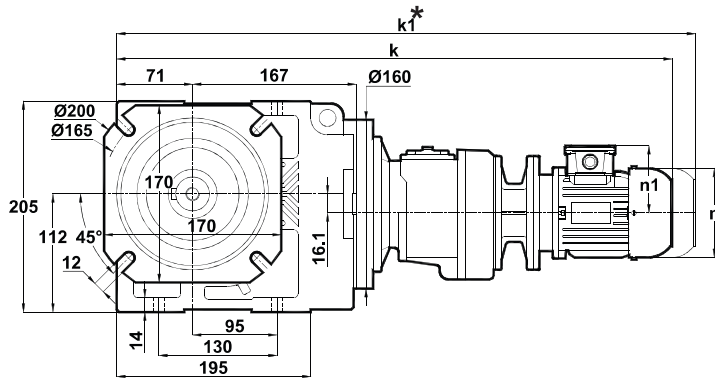
Tabella dimensionali

Dimension Pages

Abmessungsseiten

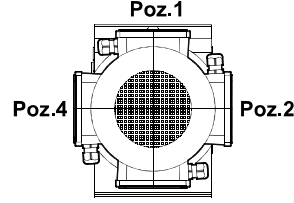
Foro di centraggio filettato secondo DIN 332 foglio 2 / Tapped center hole to DIN 332, sheet 2 / Zentrierung mit gewinde DIN 332, Blatt 2

KV275.02
KV276.02



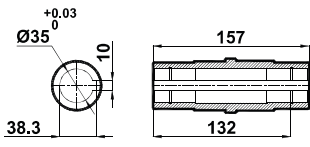
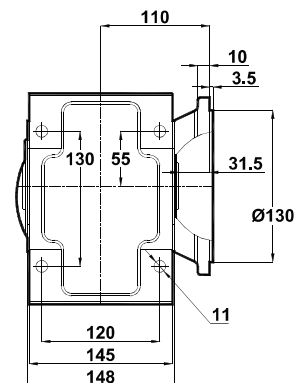
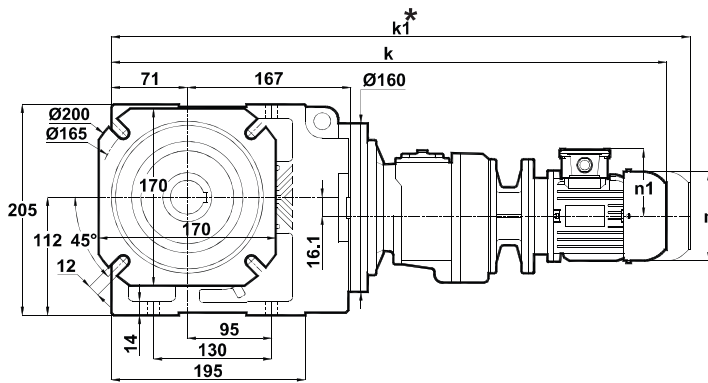
	63/B5	71/B5	80/B5
k	620	648	683
k1	-	768	803
n	116	138	156
n1	97	110	118

Posizioni morsetti
Terminal Box Positions
Klemmenkasten Positionen



Poz.3
63-71-80
Tipo / Type / Typ

KV275.03
KV276.03



	63/B5	71/B5	80/B5
k	620	648	683
k1	-	768	803
n	116	138	156
n1	97	110	118

La misura "k1" è per motori dotati di freno.
Dimension "k1" is for motors with brake.
Maße "k1" ist für Bremsenmotoren.



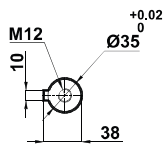
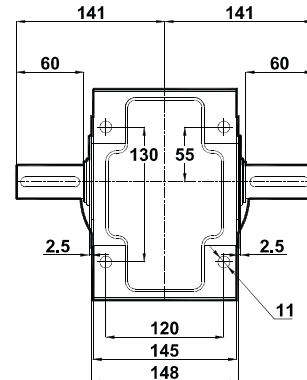
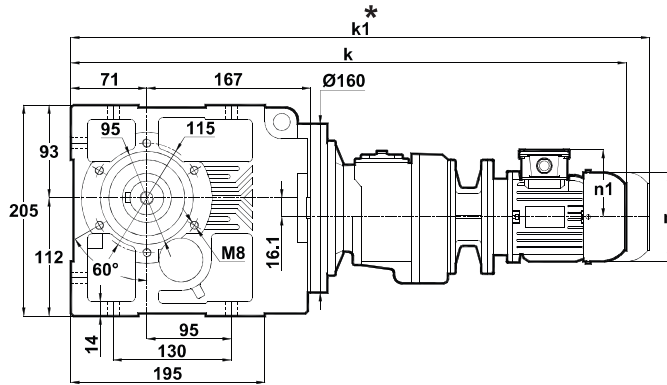
Tabella dimensionali

Dimension Pages

Abmessungsseiten

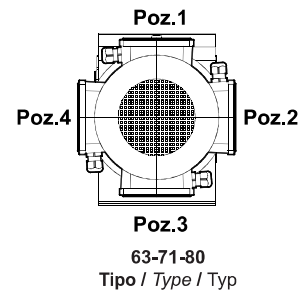
Foro di centraggio filettato secondo DIN 332 foglio 2 / Tapped center hole to DIN 332, sheet 2 / Zentrierung mit gewinde DIN 332, Blatt 2

KV275.04
KV276.04

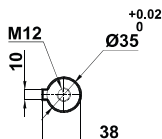
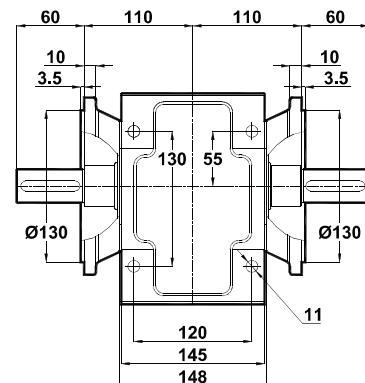
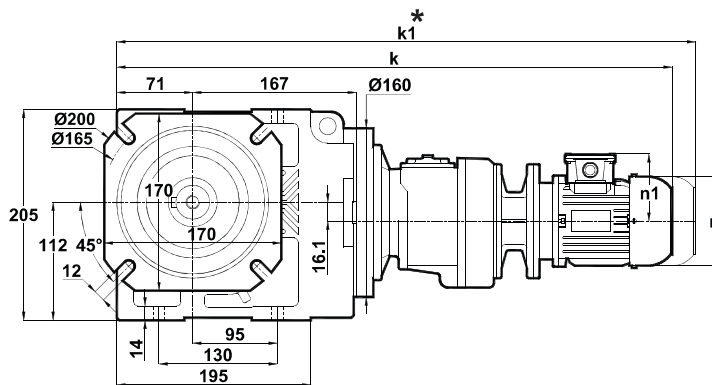


	63/B5	71/B5	80/B5
k	620	648	683
k1	-	768	803
n	116	138	156
n1	97	110	118

Posizioni morsettiera
Terminal Box Positions
Klemmenkasten Positionen



KV275.05
KV276.05



	63/B5	71/B5	80/B5
k	620	648	683
k1	-	768	803
n	116	138	156
n1	97	110	118

La misura "k1" è per motori dotati di freno. I riduttori completi di motori elettrici tipo 63 e 71 non hanno la ventola di raffreddamento, che invece hanno gli altri tipi. Dimension "k1" is for motors with brake. Gearboxes with 63 and 71 type electrical motors are not fan cooled, other types are fan cooled.

Maße "k1" ist für Bremsenmotoren. Getrieben mit 63 und 71 typ Motoren sind ohne Kühlung, andere Typen sind mit Ventilator gekühlt.

La misura "k1" è per motori dotati di freno. Dimension "k1" is for motors with brake. Maße "k1" ist für Bremsenmotoren.



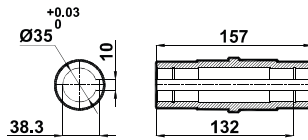
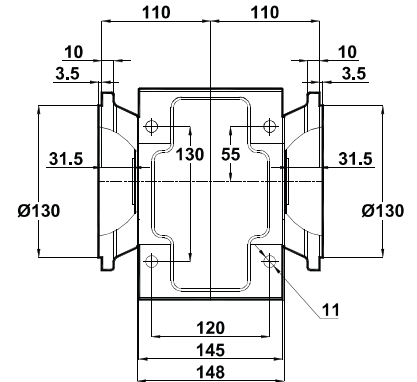
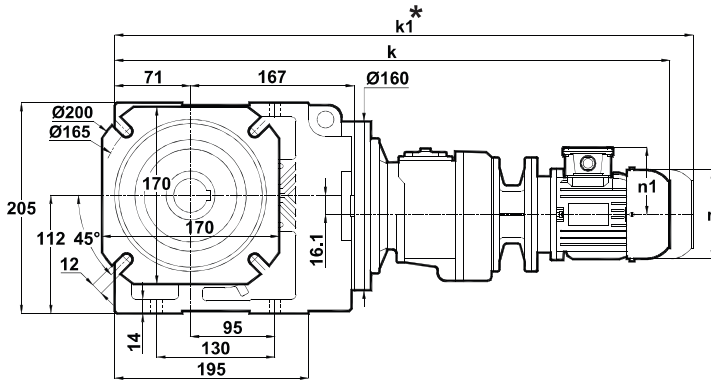
Tabella dimensionali

Dimension Pages

Abmessungsseiten

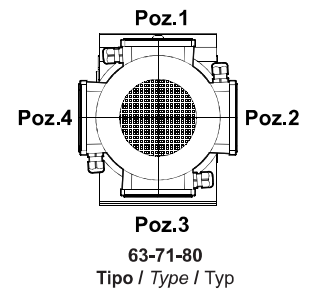
Foro di centraggio filettato secondo DIN 332 foglio 2 / Tapped center hole to DIN 332, sheet 2 / Zentrierung mit gewinde DIN 332, Blatt 2

KV275.08
KV276.08



	63/B5	71/B5	80/B5
k	620	648	683
k1	-	768	803
n	116	138	156
n1	97	110	118

Posizioni morsetteria
Terminal Box Positions
Klemmenkasten Positionen



La misura "k1" è per motori dotati di freno.
Dimension "k1" is for motors with brake.
Maße "k1" ist für Bremsenmotoren.