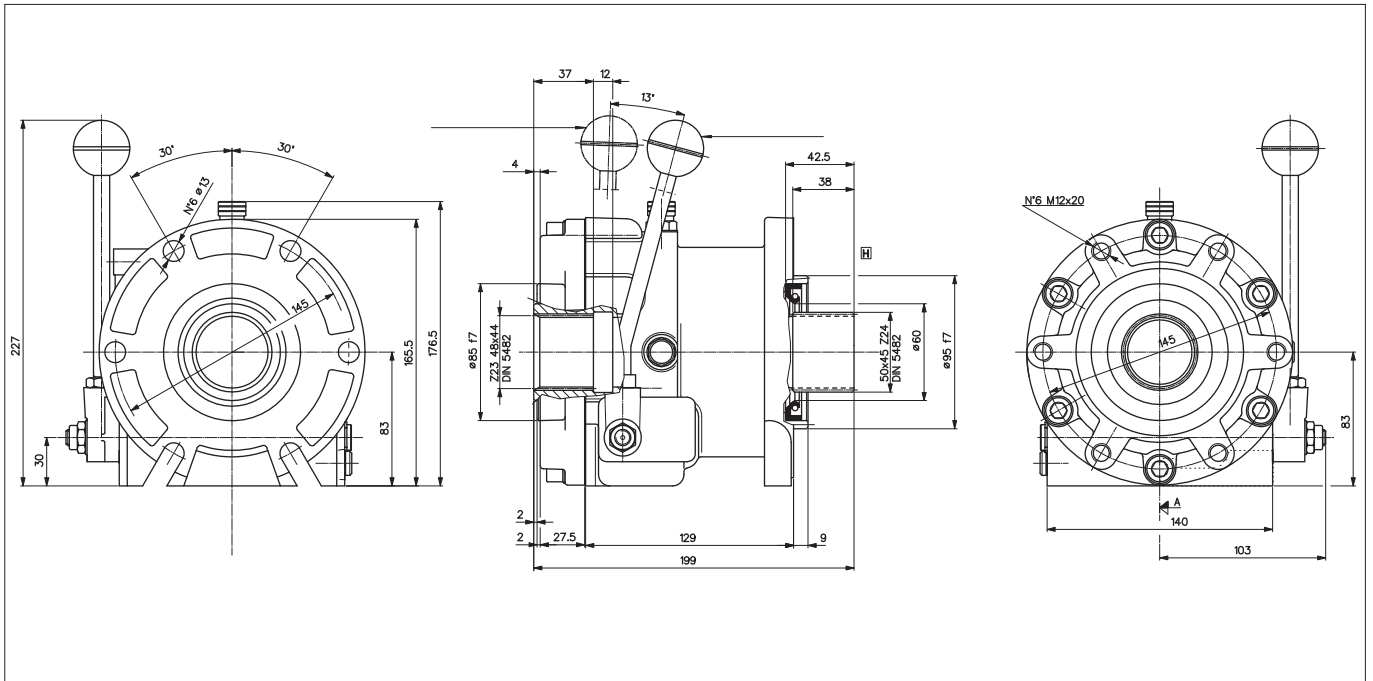
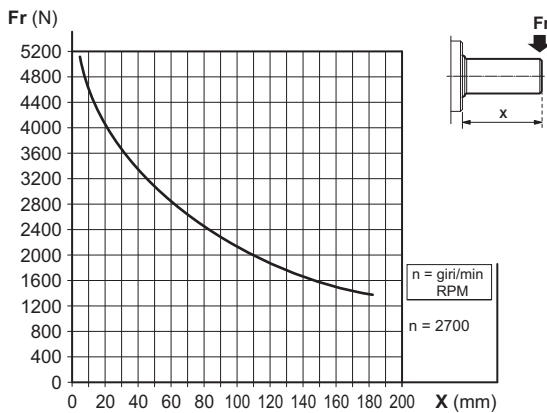


MECHANICAL CLUTCH, DIN 5482 Z24 SHAFT

2



MAXIMUM LOAD ON THE SHAFT



The mechanical clutches "IM2 Universale" are fitted between motor (electrical or engine) and hydraulic pump or motor, the pump or motor is engaged using a manual lever.

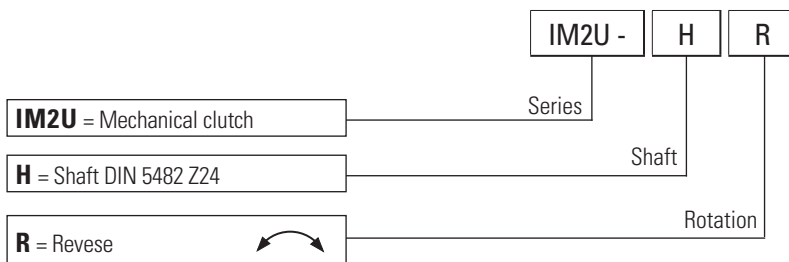
FEATURES

Radial load (**)	See graphic
RPM max	2700 RPM
Max engagement speed (*)	420 RPM
Max. torque	60 daNm
Moment of inertia	0.0048846 kgm ²
Life (**)	3500 hours
Working temperature	-20 °C ÷ +80 °C
Oil quantity	0.4 lt.
Type of oil	CLP 150-ISO VG150
Oil replacement	12 months

(*) The engagement and disengagement must be done when the pump is unloaded max speed 300 RPM (reversible type).

(**)Nominal values calculated according to ISO 281. For more information, contact our technical department.

ORDERING CODE

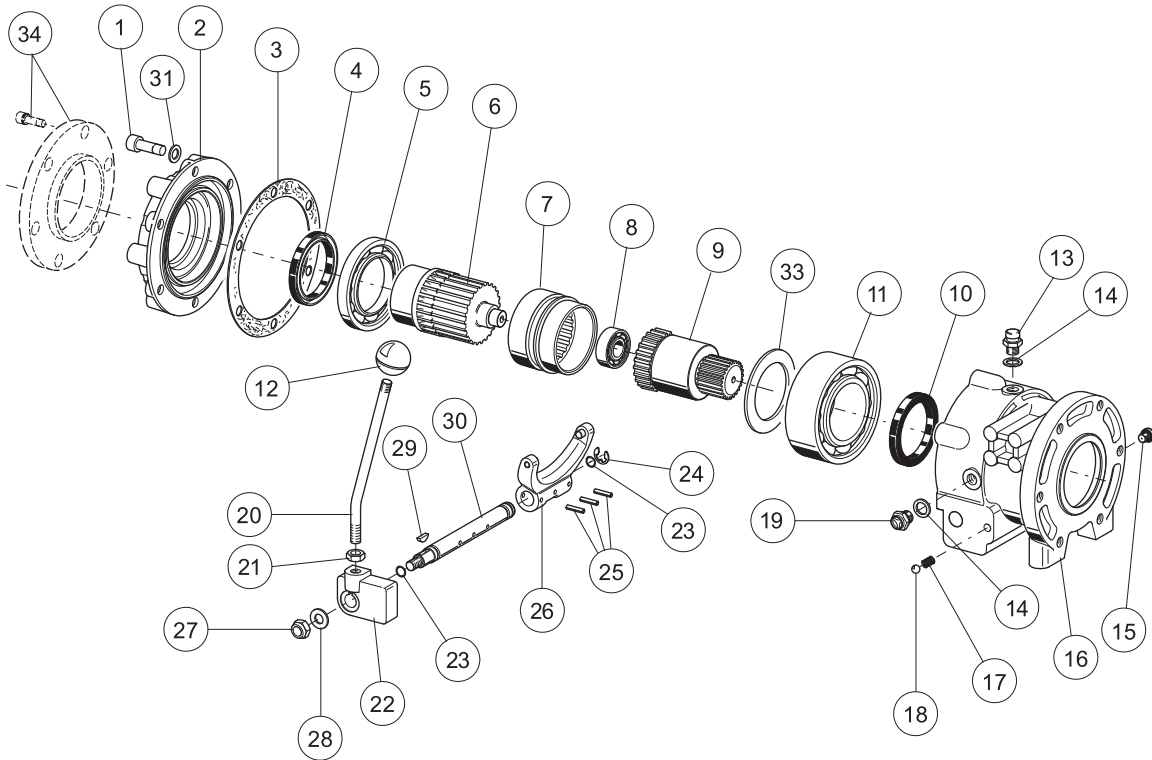


Flanges sect. 4.01

A	SAE A	F	GR. 3.5
B	SAE B	G	GR. 4
C	SAE C	L	ISO 1
D	GR. 2	M	ISO 2
E	GR. 3	P	ISO 3

SPARE PARTS

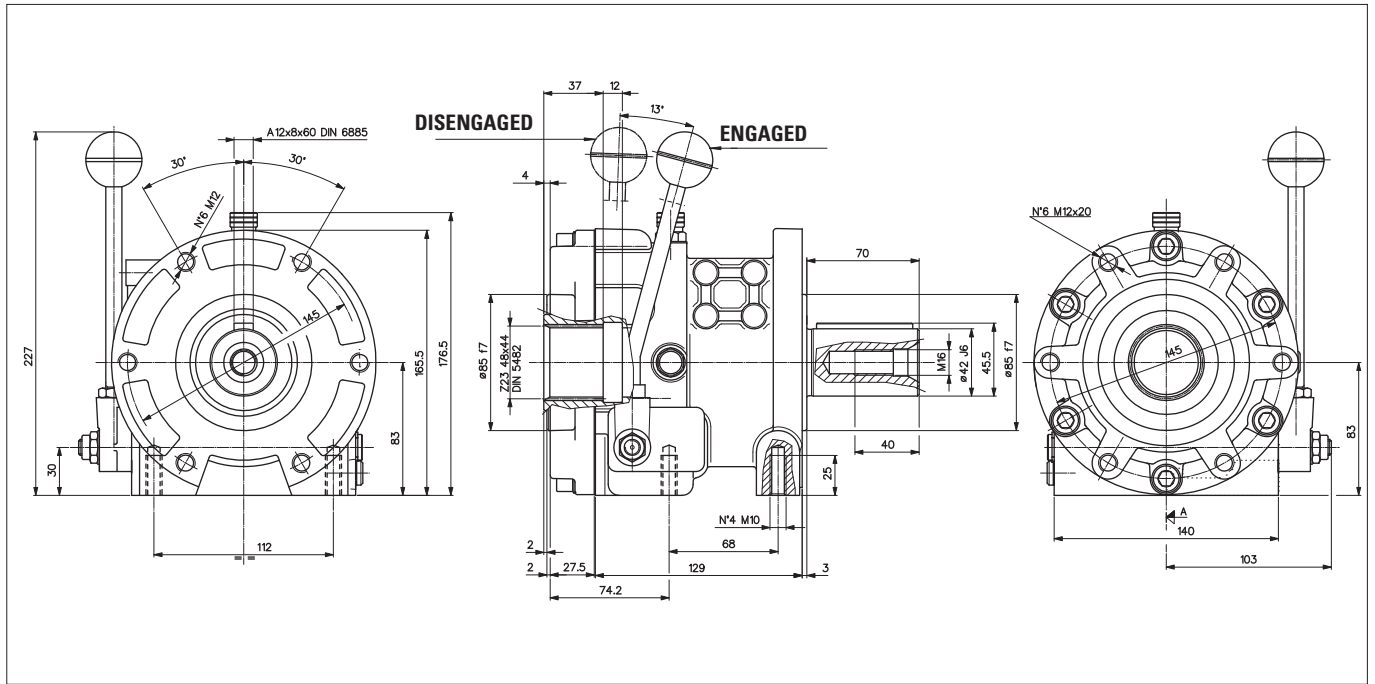
2



Ref.	Code	Q.ty	Description
		IM2U-H-R	
1	Q26075125	6	Screw TCEI M10x30
2	39030400	1	Cover
3	39200200	1	Gasket
4	44103600	1	Shaft seal 60x75x8
5	44005900	1	Bearing 16012 60x95x11
6	34201400	1	Inlet shaft
7	31209400	1	Sleeve - reversible
8	44006000	1	Bearing 6203 17x40x12
9	34239000	1	Outlet shaft Z.24 - reversible
10	44105000	1	Shaft seal 60x85x10
11	44006100	1	Bearing 3212 60x110x36,5
12	49100400	1	Knob D.35
13	49100100	1	Plug G.1/4
14	49000100	2	Nylon washer 13x19x1.5
15	49145100	1	Plug with O-Ring G.1/8
16	39002500	1	Body
17	39100400	1	Spring

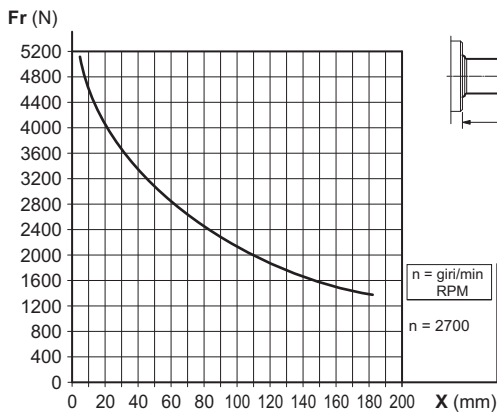
Ref.	Code	Q.ty	Description
		IM2U-H-R	
18	Q28620056	1	Ball D.8,5
19	49100200	1	Level plug G.1/4
20	34300400	1	Lever
21	Q26514069	1	Nut M10x6
22	39101900	1	Plate
23	Q25830083	2	O-Ring 10.77x2.62
24	Q27100014	1	Ring D.12
25	Q27420186	3	Needle 4x20
26	29000012	1	Yoke
27	Q26560330	1	Nut M10x10
28	Q26769015	1	Washer 10,5x21x2
29	Q27500072	1	Key 4x6.5
30	34300500	1	Pin
31	Q26801010	6	Washer Schnorr S10
33	39116400	1	Flange D.75x3x60
34	—	1	Flange kit (sect. 4.01)

MECHANICAL CLUTCH, CYLINDRICAL SHAFT



The mechanical clutches IM2 are fitted between motor (electrical or engine) and hydraulic pump or motor, the pump or motor is engaged using a manual lever.

MAXIMUM LOAD ON THE SHAFT



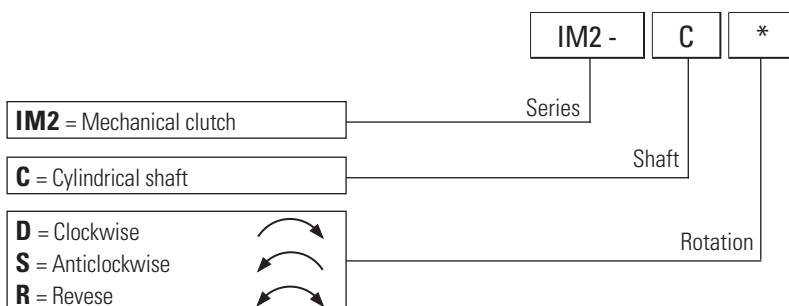
FEATURES

Radial load (**)	See graphic
RPM max	2700 RPM
Max engagement speed (*)	420 RPM
Max. torque	60 daNm
Moment of inertia	0.0048846 kgm ²
Life (**)	3500 hours
Working temperature	-20 °C ÷ +80 °C
Oil quantity	0.4 lt.
Type of oil	CLP 150-ISO VG150
Oil replacement	12 months

(*) The engagement and disengagement must be done when the pump is unloaded max speed 420 RPM. In the reversible type we suggest 300 RPM as maximum speed to operate the engagement.

(**)Nominal values calculated according to ISO 281. For more information, contact our technical department.

ORDERING CODE

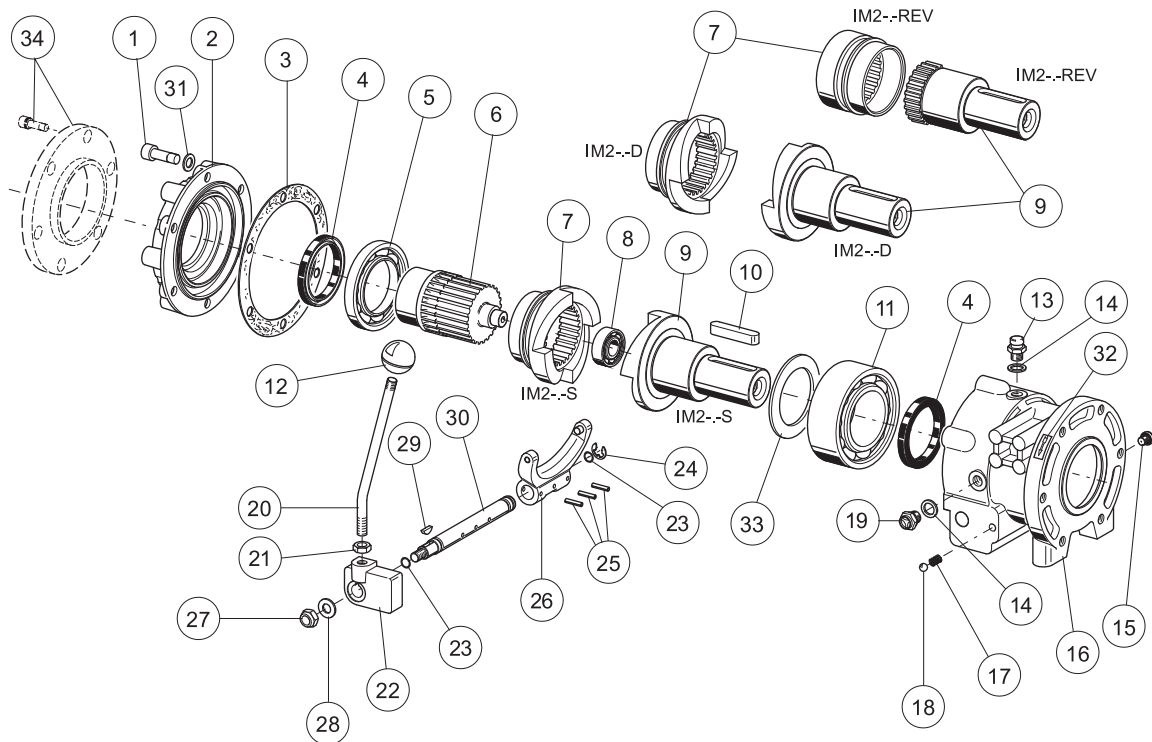


Flanges sect. 4.01

A	SAE A	F	GR. 3.5
B	SAE B	G	GR. 4
C	SAE C	L	ISO 1
D	GR. 2	M	ISO 2
E	GR. 3	P	ISO 3

SPARE PARTS

2



Ref.	Code	Q.ty			Description
		IM2-C-D	IM2-C-S	IM2-C-R	
1	Q26075125	6	6	6	Screw TCEI M10x30
2	39030400	1	1	1	Cover
3	39200200	1	1	1	Gasket
4	44103600	2	2	2	Shaft seal 60x75x8
5	44005900	1	1	1	Bearing 16012 60x95x11
6	34201400	1	1	1	Inlet shaft
7	31200300	1	—	—	Sleeve - right
	31200400	—	1	—	Sleeve - left
	31209400	—	—	1	Sleeve - reversible
8	44006000	1	1	1	Bearing 6203 17x40x12
9	34201200	1	—	—	Outlet shaft - right
	34201300	—	1	—	Outlet shaft - left
	34238900	—	—	1	Outlet shaft - reversible
10	Q27470413	1	1	1	Key A12x8x60
11	44006100	1	1	1	Bearing 3212 60x110x36,5
12	49100400	1	1	1	Knob D.35
13	49100100	1	1	1	Plug G.1/4
14	49000100	2	2	2	Nylon washer 13x19x1.5
15	49145100	1	1	1	Plug with O-Ring G.1/8

Ref.	Code	Q.ty			Description
		IM2-C-D	IM2-C-S	IM2-C-R	
16	39001300	1	1	1	Body
17	39100400	1	1	1	Spring
18	Q28620056	1	1	1	Ball D.8,5
19	49100200	1	1	1	Level plug G.1/4
20	34300400	1	1	1	Lever
21	Q26514069	1	1	1	Nut M10x6
22	39101900	1	1	1	Plate
23	Q25830083	2	2	2	O-Ring 10.77x2.62
24	Q27100014	1	1	1	Ring D.12
25	Q27420186	3	3	3	Needle 4x20
26	29000012	1	1	1	Yoke
27	Q26560330	1	1	1	Nut M10x10
28	Q26769015	1	1	1	Washer 10,5x21x2
29	Q27500072	1	1	1	Key 4x6.5
30	34300500	1	1	1	Pin
31	Q26801010	6	6	6	Washer Schnorr D.10
32	LAB00014	1	1	—	Label
33	39116400	—	—	1	Flange D.75x3x60
34	—	1	1	1	Flange kit (sect. 4.01)