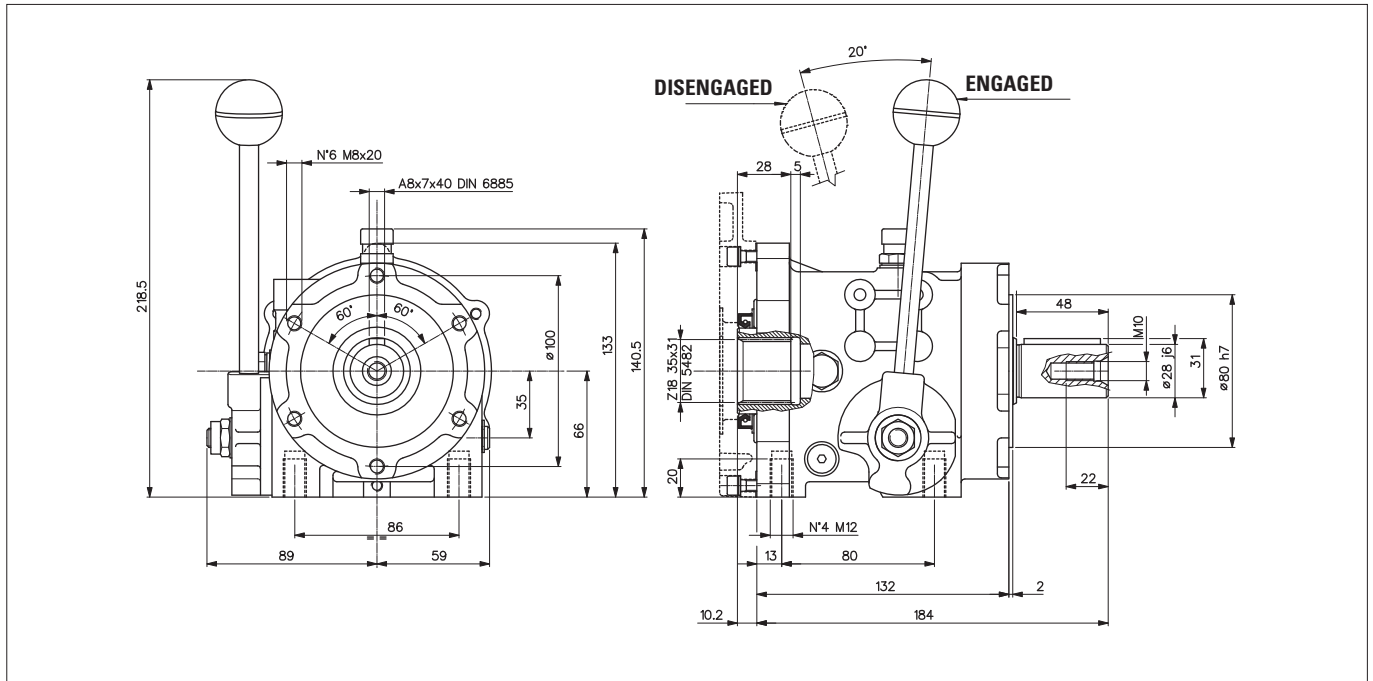
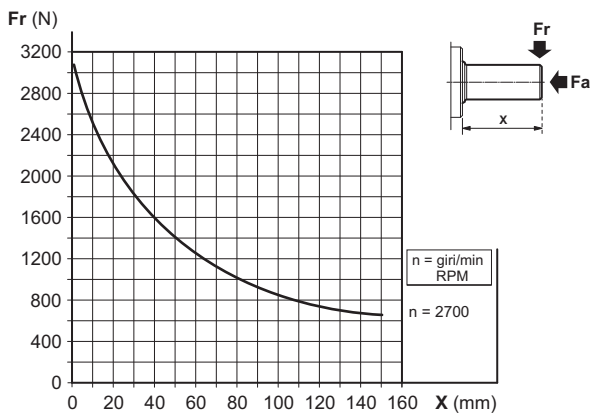


## MECHANICAL CLUTCH, CYLINDRICAL SHAFT FLANGE FOR PUMP GR.2-3 / SAE A / SAE B

2



### MAXIMUM LOAD ON THE SHAFT



The mechanical clutches IM1 are fitted between motor (electrical or engine) and hydraulic pump or motor, the pump or motor is engaged using a manual lever.

### FEATURES

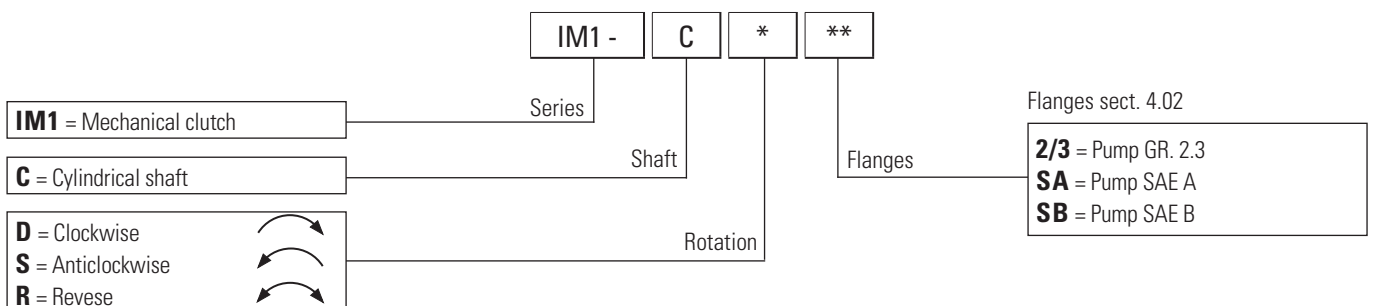
Radial load (**)	See graphic
Max. axial load (**)	$F_a \leq F_r \cdot 0,2$
RPM max	2700 RPM
Max engagement speed (*)	420 RPM
Max. torque	19 daNm
Moment of inertia	0.0004524 kgm <sup>2</sup>
Life (**)	3500 hours
Working temperature	-20 °C ÷ +80 °C
Oil quantity	0.5 lt.
Type of oil	CLP 150-ISO VG150
Oil replacement	12 months

(\*) The engagement and disengagement must be done when the pump is unloaded max speed 420 RPM. In the reversible type we suggest 300 RPM as maximum speed to operate the engagement.

(\*\*)Nominal values calculated according to ISO 281. For more information, contact our technical department.

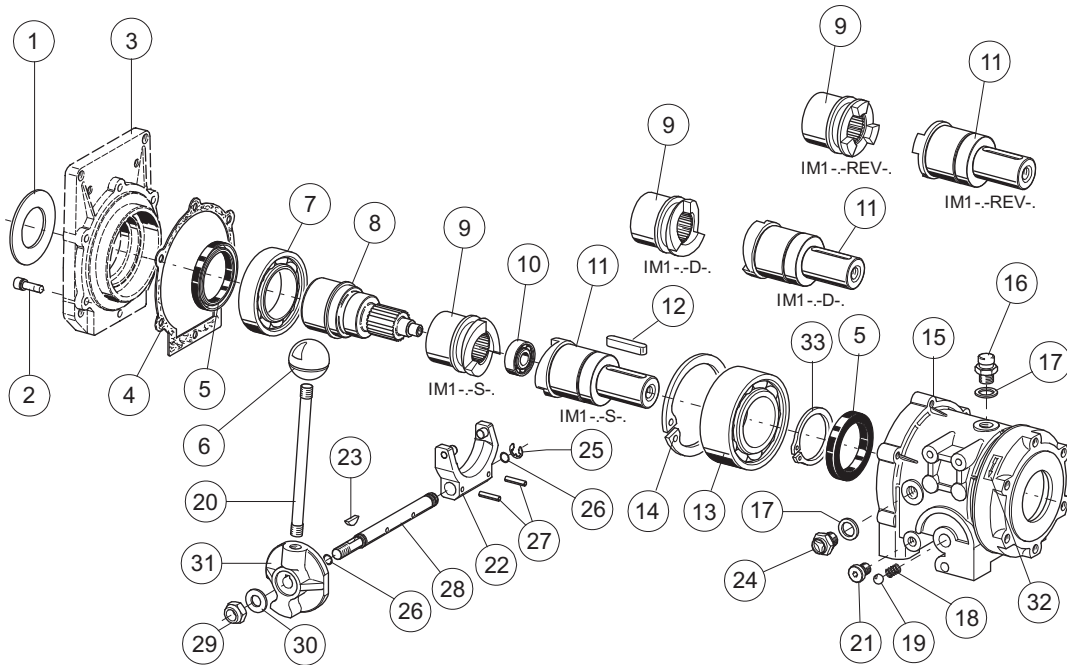
(\*) Nominal values calculated according to ISO 281. For more information, contact our technical department.

### ORDERING CODE



## SPARE PARTS

2



Ref.	Code	Q.ty			Description
		IM1-C-D..	IM1-C-S..	IM1-C-REV..	
1	39101200	1	1	1	Flange D.66/36,5 (only for gr.2-3)
2	40007300	6	6	6	Screw TCEI M6x20
3	—	1	1	1	Flanges (sect.4.02)
4	39204400	1	1	1	Gasket
5	44102200	2	2	2	Shaft seal 45x60x7
6	49100400	1	1	1	Knob D.35
7	44000300	1	1	1	Bearing 6009 45x75x16
8	34200100	1	1	1	Inlet shaft
9	31205000	1	—	—	Sleeve - right
	31204900	—	1	—	Sleeve - left
	31205900	—	—	1	Sleeve - reversible
10	44005700	1	1	1	Bearing 6200 10x30x9
11	34254600	1	—	—	Outlet shaft - right
	34254500	—	1	—	Outlet shaft - left
	34254700	—	—	1	Outlet shaft - reversible
12	Q27470305	1	1	1	Key A8x7x40
13	44005800	1	1	1	Bearing 3209 45x85x30,2
14	Q27160085	1	1	1	Snap ring I85
15	39045700	1	1	1	Body

Ref.	Code	Q.ty			Description
		IM1-C-D..	IM1-C-S..	IM1-C-REV..	
16	49100100	1	1	1	Plug G.1/4
17	49000100	2	2	2	Nylon washer 13x19x1.5
18	39100400	1	1	1	Spring
19	Q28620056	1	1	1	Ball D.8,5
20	34300100	1	1	1	Lever
21	49145100	1	1	1	Plug with O-Ring G.1/8
22	29000011	1	1	1	Yoke
23	Q27500072	1	1	1	Key 4x6.5
24	49100200	1	1	1	Level plug G.1/4
25	Q27100012	1	1	1	Ring D.9
26	Q25830015	2	2	2	O-Ring 8.74x1.78
27	Q27420186	2	2	2	Needle 4x20
28	34300200	1	1	1	Pin
29	Q26560330	1	1	1	Nut M10x10
30	Q26769015	1	1	1	Washer 10,5x21x2
31	39100200	1	1	1	Collet
32	LAB00014	1	1	—	Label
33	Q27150450	1	1	1	Snap ring E45