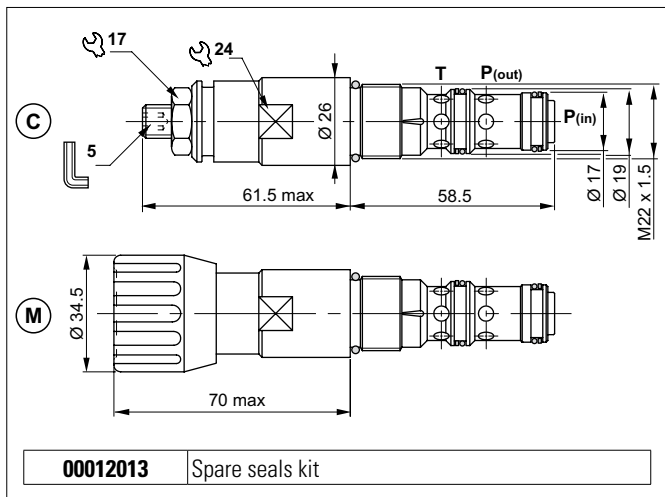


## SEQUENCE VALVES - PILOT OPERATED

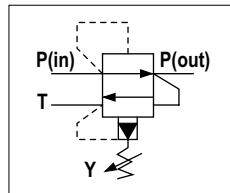


The pilot-operated sequence valve feeds a secondary branch of a circuit when a set pressure value is reached, guaranteeing minimum variation of the set pressure with flow alterations of up to 90 l/min. Slight leakage is tolerated for this type of valve. It raises the safety level by making it impossible for the plant operators to set a higher pressure rating, than that specified in the catalogue. It has a pack spring with a mechanical stop. It has a galvanised steel body. The guided ball pilot poppet and cylindrical main plunger are made from tempered and ground steel.

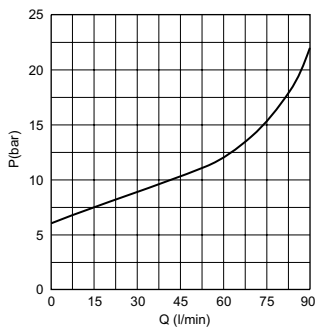
### HYDRAULIC FEATURES

Max. pressure	350 bar
Setting range:	
Spring 1 (white)	max 60 bar
Spring 2 (yellow)	max 120 bar
Spring 3 (green)	max 250 bar
Max. Flow	90 l/min
Max. draining on port T	0.5 ÷ 0.7 l/min
Hydraulic fluid	DIN 51524 Mineral oils
Fluid viscosity	10 ÷ 500 mm <sup>2</sup> /s
Fluid temperature	-25°C ÷ 75°C
Ambient temperature	-25°C ÷ 60°C
Max. contamin. level class with filter	ISO 4406:1999 - class 19/17/14
Weight	0.25 kg
Tightening torque	30 ÷ 40 Nm
Cavity (M22 x 1.5)	CN047002 (See section 15)

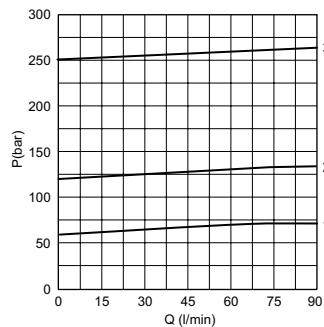
### HYDRAULIC SYMBOL



### MIN.SETTING PRESSURE



### PRESSURE-FLOW RATE



1 = CVS20.1.. - 2 = CVS20.2.. - 3 = CVS20.3..

Fluid used: mineral based oil with viscosity 46 mm<sup>2</sup>/s at 40°C.

The minimum permissible setting pressure depending on the spring: see curves.

### ORDERING CODE

