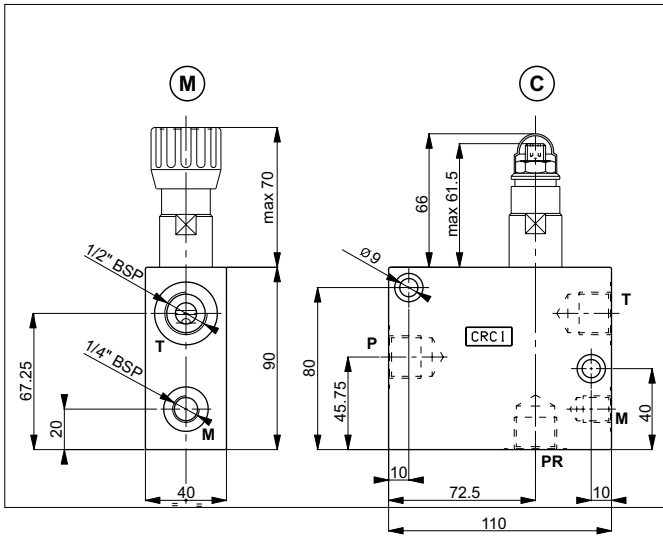


PRESSURE REDUCING AND SEQUENCE VALVES - IN-LINE MOUNTING



The CRC.1 aluminium body allows the in-line mounting connections for CVS.20 sequence and CVR.20 pressure reducing valves.

For pressure reducing version the body is provided with a one-way check valve, which allows free flow to opposite direction (PR toward P)

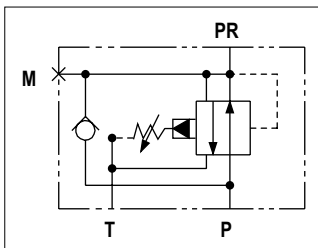
For the sequence version a blind grub screw has been placed instead of a check valve.

- Mounting the blind grub screw , code **M78100013**, it is possible to transform the body from reducing valve to sequence valve.
- Mounting the blind grub screw , code **V70052204**, it is possible to transform the body from sequence valve to reducing valve.

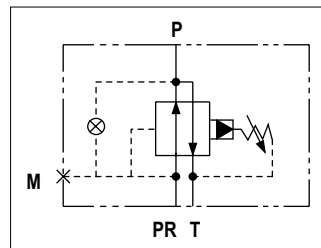
HYDRAULIC FEATURES

Max. pressure	350 bar
Setting range:	
Spring 1 (white)	max 60 bar
Spring 2 (yellow)	max 120 bar
Spring 3 (green)	max 250 bar
Max. Flow	90 l/min
Max. draining on port T	0.5 ÷ 0.7 l/min
Hydraulic fluid	DIN 51524 Mineral oils
Fluid viscosity	10 ÷ 500 mm ² /s
Fluid temperature	-25°C ÷ 75°C
Ambient temperature	-25°C ÷ 60°C
Max. contamin. level class with filter	ISO 4406:1999 - class 19/17/14
Weight	1.224 kg

HYDRAULIC SYMBOLS

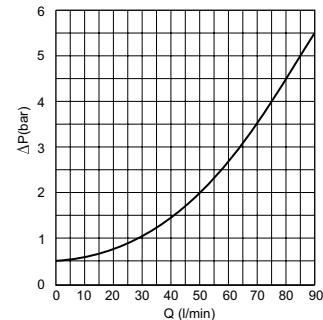


Reducing valve version



Sequence valve version

FREE FLOW THROUGH THE CHECK VALVE



Fluid used: mineral based oil with viscosity 46 mm²/s at 40°C.

ORDERING CODE

CRC	1	*	*	*	**	1
Series	Size	Adjustment			Variants	Setting ranges
CRC = Body for sequence and pressure reducing cartridge valve Size 20 (seat M22x1,5)	1 = Size connection 1/2" BSP				00 = No variants V1 = Viton	1 = 60 bar (white spring) 2 = 120bar (yellow spring) 3 = 250 bar (green spring) 0 = Without cartridge valve
R = Pressure reducing cartridge valve S = Sequence cartridge valve						
M = Plastic knob C = Grub screw 0 = Without cartridge valve						