

# AM.3.RGT... MODULAR VALVES FOR REGENERATIVE CIRCUIT CETOP 3



AM.3.RGT...

SCREWS AND STUDS

CH. IV PAGE 21

This modular valve produces a regenerative system to increase the actuator (differential cylinder) exit speed as shown in the diagram.

In particular, if a cylinder is used with a 2:1 ratio for the operating surfaces, the exit and re-entry speeds are the same.

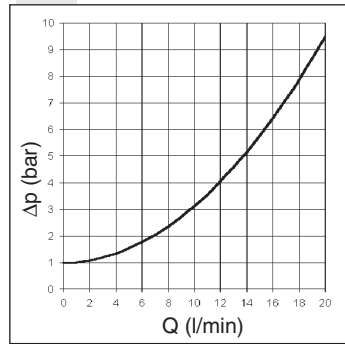
Max. operating pressure	350 bar
Max. flow at port A/B/P/T	20 l/min
Hydraulic fluids	Mineral oils DIN 51524
Fluid viscosity	10 ÷ 500 mm <sup>2</sup> /s
Fluid temperature	-25°C ÷ 75°C
Ambient temperature	-25°C ÷ 60°C
Max. contamination level	class 10 in accordance with NAS 1638 with filter $\beta_{25} \geq 75$
Weight	1,7 Kg

4

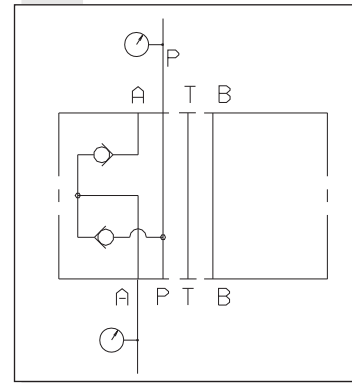
### ORDERING CODE

- AM** Modular valve
- 3** CETOP 3/NG6
- RGT** For regenerative circuit
- A** Size of check valves 3/8"BSP
- 1** Opening pressure 1 bar
- \*\*** **00** = No variant  
**V1** = Viton
- 1** Serial No.

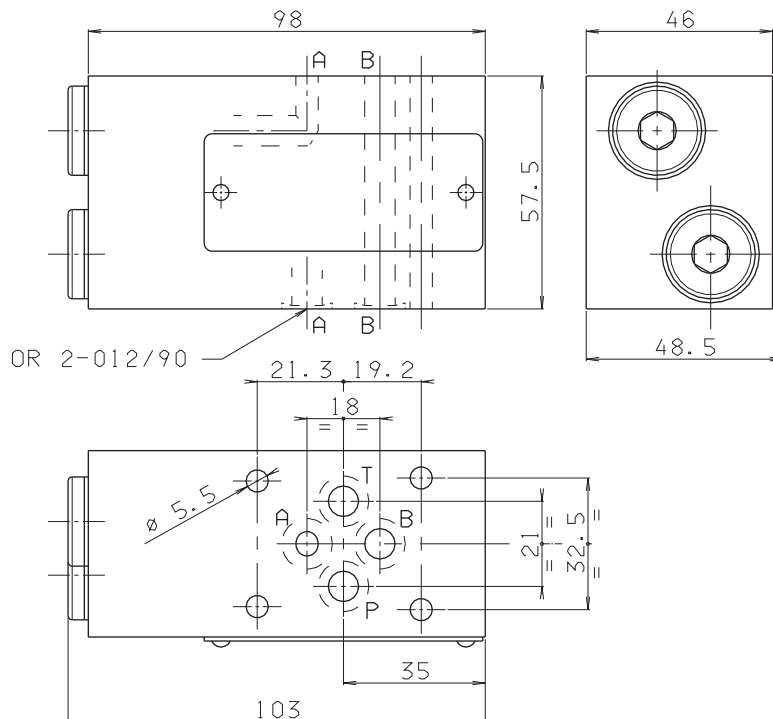
### PRESSURE DROPS A→P



### HYDRAULIC SYMBOL



### OVERALL DIMENSIONS



Support plane specifications

