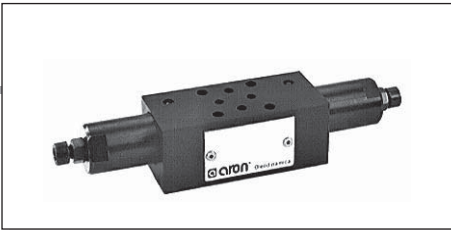


AM.2.VM... MODULAR MAXIMUM PRESSURE VALVES CETOP 2



AM.2.VM...
 CMP.02... BFP CARTRIDGE CATALOGUE
 SCREWS AND STUDS CH. IV PAGE 6

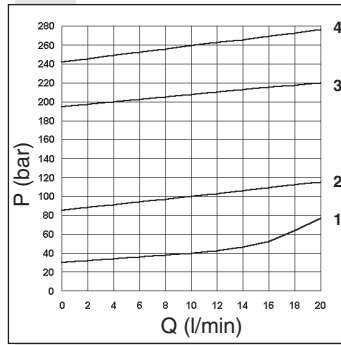
AM.2.VM type pressure regulating valves are available with an operating pressure range of 4 to 250 bar. Adjustment is via a grub screw. Two base versions are available: **AM.2.VM..** single on A or B, and double on A and B lines, with drainage on T; **AM.3.VM.P..** single on P line, with drainage on T. 4 different types of springs can be mounted on all versions, with the adjustment range specified in the specifications. The cartridge used is the CMP.02 type.

| | | |
|--------------------------|---|---------|
| Max. operating pressure | 250 bar | |
| Setting ranges: | spring 1 | 30 bar |
| | spring 2 | 90 bar |
| | spring 3 | 180 bar |
| | spring 4 | 250 bar |
| Max. flow | 20 l/min | |
| Hydraulic fluids | Mineral oils DIN 51524 | |
| Fluid viscosity | 10 ÷ 500 mm ² /s at 50°C | |
| Fluid temperature | -20°C ÷ 75°C | |
| Max. contamination level | class 10 in accordance with NAS 1638 with filter β ₂₅ ≥ 75 | |
| Weight AM.2.VM.A/B/P... | 0,53 Kg | |
| Weight AM.2.VM.AB... | 0,7 Kg | |

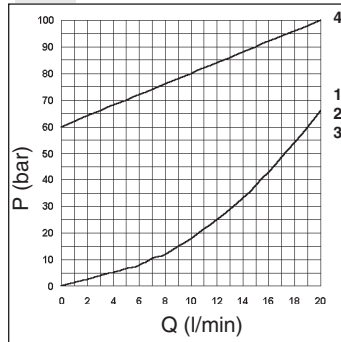
ORDERING CODE

- AM** Modular valve
- 2** CETOP 2/NG4
- VM** Max. pressure valves
- **** Adjustment on the lines **A / B / P / AB**
- C** Type of adjustment grub screw
- *** Setting ranges at port A/B/P
1 = max.30 bar (white spring)
2 = max.90 bar (yellow spring)
3 = max.180 bar (green spring)
4 = max.250 bar (orange spring)
- *** Setting ranges at port B
 (Omit if the setting is same as that at port A)
1 = max.30 bar (white spring)
2 = max.90 bar (yellow spring)
3 = max.180 bar (green spring)
4 = max.250 bar (orange spring)
- **** **00** = No variant
V1 = Viton
- 1** Serial No.

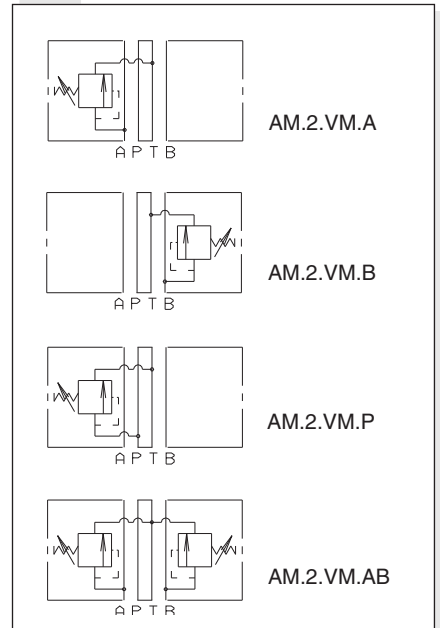
PRESSURE - FLOW RATE



MINIMUM SETTING PRESSURE



HYDRAULIC SYMBOLS



OVERALL DIMENSIONS

