

# AM.2.QF... MODULAR FLOW REGULATOR CETOP 2



**AM.2.QF...**

SCREWS AND STUDS

CH. IV PAGE 6

AM.2.QF type one way non-compensated throttle valves are adjustable by means of a grub screw.

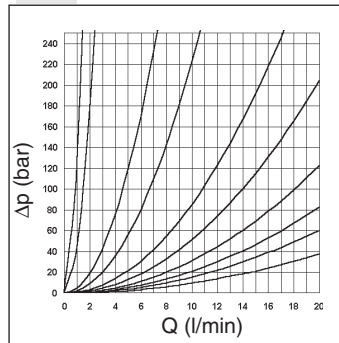
Three types of regulations are available on A / B / AB lines, as shown in the hydraulic symbols.

|                          |                                                                       |
|--------------------------|-----------------------------------------------------------------------|
| Max. operating pressure  | 250 bar                                                               |
| Flow rate regulation     | on 6 screw turns                                                      |
| Max. flow.               | 20 l/min                                                              |
| Hydraulic fluids         | Mineral oils DIN 51524                                                |
| Fluid viscosity          | 10 ÷ 500 mm <sup>2</sup> /s a 50°C                                    |
| Fluid temperature        | -20°C ÷ 75°C                                                          |
| Max. contamination level | class 10 in accordance with NAS 1638 with filter $\beta_{25} \geq 75$ |
| Weight AM.2.QF.A/B...    | 0,5 Kg                                                                |
| Weight AM.2.QF.AB...     | 0,6 Kg                                                                |

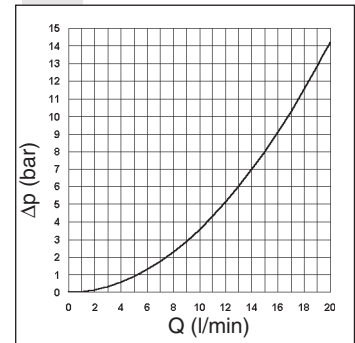
### ORDERING CODE

|           |                                             |
|-----------|---------------------------------------------|
| <b>AM</b> | Modular valve                               |
| <b>2</b>  | CETOP 2/NG4                                 |
| <b>QF</b> | Non-compensated flow rate regulator         |
| <b>**</b> | Control on lines<br><b>A / B / AB</b>       |
| <b>C</b>  | Type of adjustment<br>grub screw            |
| <b>**</b> | <b>00</b> = No variant<br><b>V1</b> = Viton |
| <b>1</b>  | Serial No.                                  |

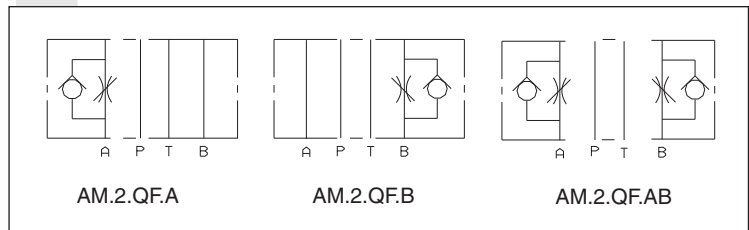
### FLOW REGULATION



### FREE FLOW THROUGH CHECK VALVE



### HYDRAULIC SYMBOLS



### OVERALL DIMENSIONS

